

4123078

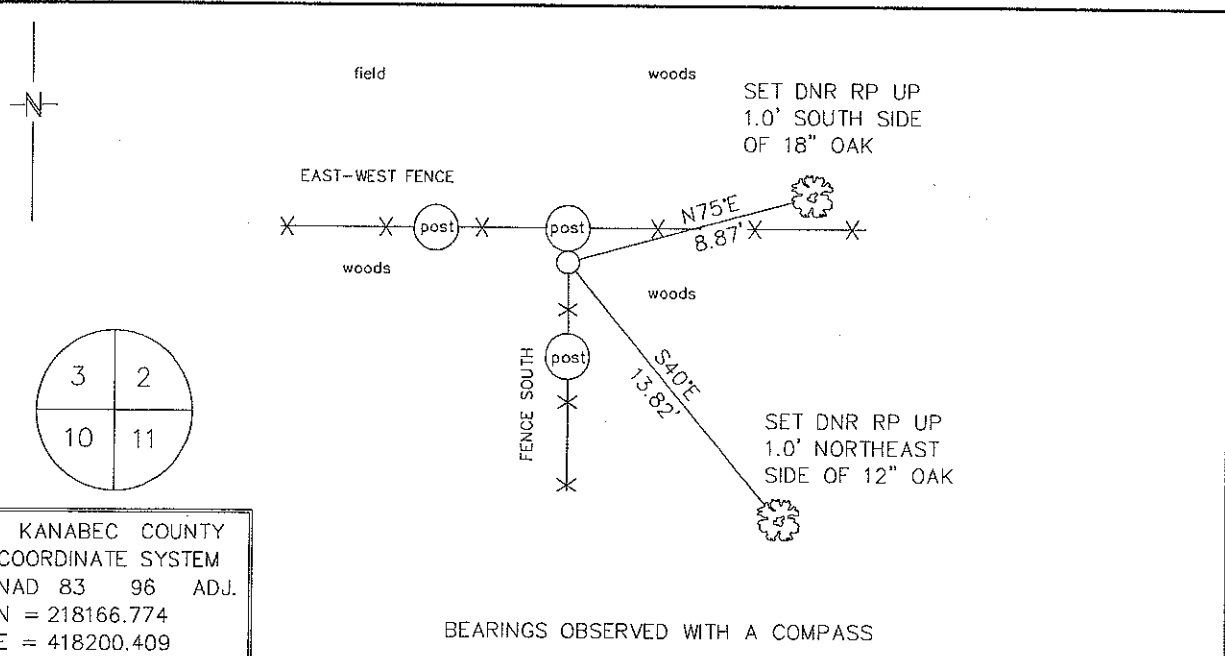
Index No. E-17

CERTIFICATE OF LOCATION OF GOVERNMENT CORNER

NORTHEAST Corner of Section 10, Township 41N, Range 23W
4TH Principal Meridian, State of Minnesota, County of KANABEC

At the corner location shown on the sketch:

- On _____ found a _____
DATE
- left monument as found, lowered monument, removed monument (explain)
- On 12/16/2009 Placed a 3/4" X 12" REBAR WITH CAP STAMPED "MN DNR LS 16098"
DATE
AT CORNER FENCE POST, FENCE E-W-S



Statement of evidence for this corner location is on back of this page.

2/02/2010
SFT00056

I certify that this document was researched and prepared by me or under my direct supervision.

SIGNATURE [Signature] DATE 12/3/2010 License Number 16098

Title: Land Surveyor Professional Engineer County Surveyor County Engineer

Northeast Corner Section 10, Township 41 North, Range 23 West

The Department of Natural Resources, Division of Lands and Minerals, contacted the following offices for information regarding this corner:

MN Secretary of State
Kanabec County Surveyor
Kanabec County Recorder's Office
Kanabec County Engineer's Office
E.G. Rud & Sons, Inc., Land Surveyors

- 1851 The US General Land Office field notes, on file in the Secretary of State's Office, show this corner to be marked with a post and the following bearing trees were marked:
Aspen 9" S 20° E 13 links (8.58')
Aspen 9" N 40° W 3 links (1.98')
- 1975 Terry Johnson surveyed section 10 and shows this corner 2653.40' easterly of the north quarter corner and 2635.12' northerly of the east quarter corner section 10. No mention of what was at the corner. We received a copy of Terry's worksheet from Ernie Rud.
- 2001 Ernie Rud did a survey in section 10 and shows the location of this corner falling on a corner fence post. He shows the same distances as the Johnson survey to the corner.
- 2009 In December, the DNR survey crew searched for this corner at the double up distance from the southeast corner of section 10 to the east quarter corner section 10. This fell at the south edge of a huge corner fence post with fences running east - west and south. No evidence of the original GLO bearing trees was found. A ¾"x12" rebar with a plastic cap stamped with MN DNR LS 16098 on it was set to mark the corner location.
North Quarter Corner Section 10 bears S 89°49'15"W 2653.87' (2640' GLO)
Northeast Corner Section 15 bears S 00°28'46" W 5270.24' (5280' GLO)

For more information on our survey in this area, please contact MN DNR, Division of Lands and Minerals, Survey Section, 1601 Minnesota Drive, Brainerd, MN 56401