

CERTIFICATE OF LOCATION OF GOVERNMENT CORNER

E 1/4 Corner of Section 10, Township 41, Range 23, 4TH P.M.

STATE OF MINNESOTA, County of KANABEC

At the corner location shown on the sketch:

*Found 1/2" iron pipe with
R.L.S. # 40341*

Kanabec County U.S. Survey Feet Coordinates
NAD 1983, HARN 1996 Adjustment
Obtained by RTK GPS Observation

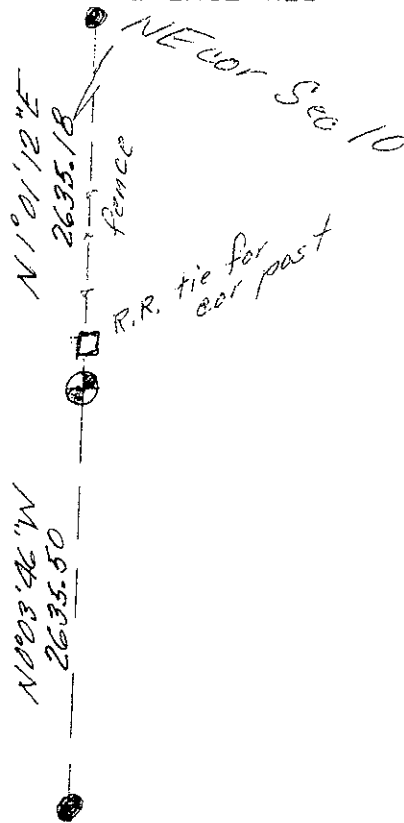
Northing= 215532.01

Easting= 418153.50

Note: NAD 1983, HARN 1996 Adjustment
coordinates are NOT compatible with
NAD 1983 coordinates

Note: 1 Meter=3937/1200 U.S. Survey Feet

SKETCH OF REFERENCE TIES



Statement of evidence relative to this corner location is on back of page.

I hereby certify that this document and the data contained herein was prepared by me or under my direct supervision.

Erest G Rud
Signature

June 5, 2013
Date

Registration No. 9808

- Land Surveyor, [] Professional Engineer
- [] County Surveyor, [] County Engineer

OFFICE OF THE COUNTY RECORDER

County of _____

I hereby certify that this document was filed in the County Recorder's office at _____ M. on the

_____ day of _____ A.D., 20____

County Recorder _____

BY _____ Deputy

DOCUMENT NO. _____

STATEMENT OF EVIDENCE - 4123077

East Quarter Corner Section 10

In October of 1851, Deputy Surveyor John M. Coley set a post to mark the East Quarter Corner of Section 10, Township 41, Range 23 West, 4th Principal Meridian.

Reference ties were taken to:

9 inch Aspen at South 21 degrees East a distance of 6 links

12 inch Aspen at North 55 degrees West a distance of 22 links

All of the original Government corner evidence was search for. None was found.

In mid 1980's Terry Johnson RLS#13115 made a survey in Section 10 and set a position on this corner that was on line and equidistant between the northeast and southeast corners of Section 10. His survey was in the northwest quarter of Section 10 so center of section was set off this location.

In 2001 E.G. Rud & Sons, Inc. did a survey in the northwest quarter and southwest quarter of Section 10 and this position was also used.

In 2010-2011 Sam DeLeo RLS#40341 did a survey in Section 11 and received testimony from Mark Sawatzky that this corner should be on the north-south fence running north from this corner. Sam set a ½ inch iron pipe with cap #40341 and took ties.

In 2013 E.G. Rud & sons, Inc. did a survey in Section 11 and found this corner set by Sam and accepted the position and established Kanabec County corners on the position. This position is 25 feet west of Terry Johnsons position, but on the same line through center of Section 10 and west quarter corner.