

CERTIFICATE OF LOCATION OF GOVERNMENT CORNER

North Quarter Corner of Section 14, Township 41 North, Range 23 West,
4th Principal Meridian, Kanabec County, State of Minnesota

At the corner location shown on the sketch:
On 6/24/2011 set a 1/2" x 24" Iron Pipe Monument with
Plastic Cap marked RLS 44490.

Kanabec County U.S. Survey Feet Coordinates
NAD 1983, HARN 1996 Adjustment
Obtained by RTK GPS observation
Northing: 212863.9664
Easting: 420803.8953

Note: NAD 1983, HARN 1996 Adjustment
coordinates are NOT compatible with
NAD 1983 coordinates
Note: 1 Meter = 3937/1200 U.S. Survey Feet

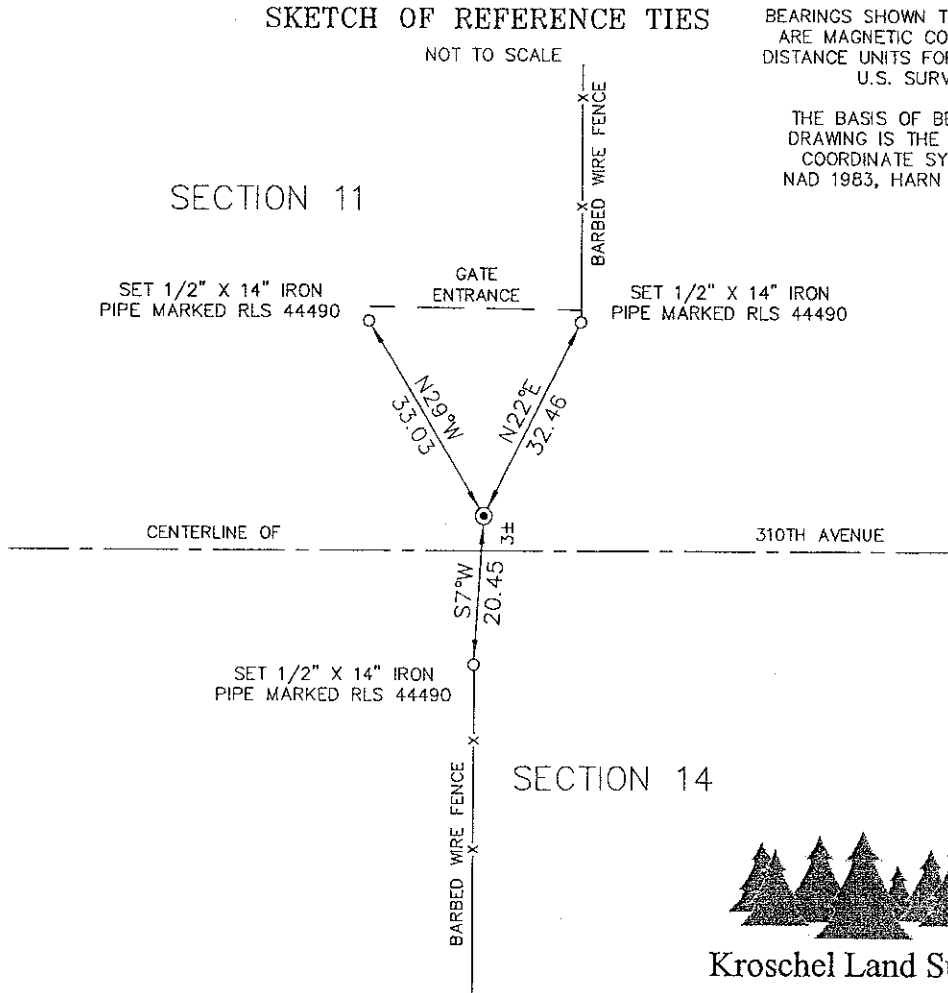
SKETCH OF REFERENCE TIES

NOT TO SCALE

BEARINGS SHOWN TO REFERENCE TIES
ARE MAGNETIC COMPASS BEARINGS
DISTANCE UNITS FOR THIS DRAWING IS
U.S. SURVEY FEET

THE BASIS OF BEARINGS FOR THIS
DRAWING IS THE KANABEC COUNTY
COORDINATE SYSTEM BY MNDOT,
NAD 1983, HARN 1996 ADJUSTMENT

120/23



Kroschel Land Surveyors, Inc.
1639 Main Street North, Suite 6, Pine City, MN 55063
Phone: 320-629-3267 Fax: 320-629-0176

Statement of evidence relative to this corner location is on back of page.

I hereby certify that this document and
the data contained herein was prepared
by me or under my direct supervision.

Tyler J. Kroschel 6-27-2011
Date

License No. 44490

- Land Surveyor
- County Surveyor

OFFICE OF THE COUNTY RECORDER
County of Kanabec

I hereby certify that this document was filed in the
County Recorder's office at _____ .M. on the
_____ day of _____ A.D., 20____

County Recorder _____
By _____, Deputy

DOCUMENT NO. _____

Statement of Evidence:

In October of 1851, Deputy Surveyor John M. Gay set a post to mark the North Quarter Corner of Section 14, Township 41 North, Range 23 West, 4th Principal Meridian.

Reference ties were taken to:

12 inch Birch at South 47 degrees West a distance of 11 links

7 inch Birch at North 58 degrees East a distance of 10 links

All of the original Government corner evidence was searched for. None was found.

Approx. 1984—Surveyor Terry Johnson, RLS 13115, made a survey in Section 10, T.41, R.23, per survey notes given to Ernie Rud, RLS 9808. Terry's notes show a computed position for the corner, but are not clear if he found or set any monument. There is no date on Terry's notes. I contacted Terry to get a copy of his records, but he said he could not find them.

In April 2011, a survey was made around Section 15, Township 41 North, Range 23 West, 4th Principal Meridian for People's National Bank of Mora to locate existing monuments, lines of occupation and establish search areas.

On 6/08/2011, we made a 12' x 15' x 2' deep excavation with a front end loader at Terry's computed location. No evidence of the corner was found in the excavation. Terry's location fits a fence line south and falls approximately 3 feet north of the current centerline of the road.

Terry's location was determined to be the best available evidence of the original corner location. On 6/24/2011 I set a 1/2" x 24" Iron Pipe with plastic cap marked RLS 44490 at Terry's computed location. I used a found Cast Aluminum Monument at South Quarter corner of Section 10 and a found 3/4" Rebar with plastic cap marked MN DNR LS 16098 at the Northeast corner of Section 14 for computing Terry's location. Established reference ties and assigned Kanabec County Coordinates.

STATEMENT OF CONTROL

Survey Control used in the field.

MN/DOT GEODETIC DATABASE STATION NO. 14177 (NABEC MNMT)
Horizontal Classification Order B

MN/DOT GEODETIC DATABASE STATION NO. 42426 (34 MN065)
Horizontal Classification Order C



Kroschel Land Surveyors, Inc.

1639 Main Street North, Suite 6, Pine City, MN 55063
Phone: 320-629-3267 Fax: 320-629-0176