

# CERTIFICATE OF LOCATION OF GOVERNMENT CORNER

East Quarter Corner of Section 15, Township 41 North, Range 23 West,  
4th Principal Meridian, Kanabec County, State of Minnesota

At the corner location shown on the sketch:  
On 4/1/2011 set a 1/2" x 24" Iron Pipe Monument with plastic cap marked RLS 44490.

Kanabec County U.S. Survey Feet Coordinates  
NAD 1983, HARN 1996 Adjustment  
Obtained by RTK GPS observation  
Northing: 210218.0435  
Easting: 418119.8474

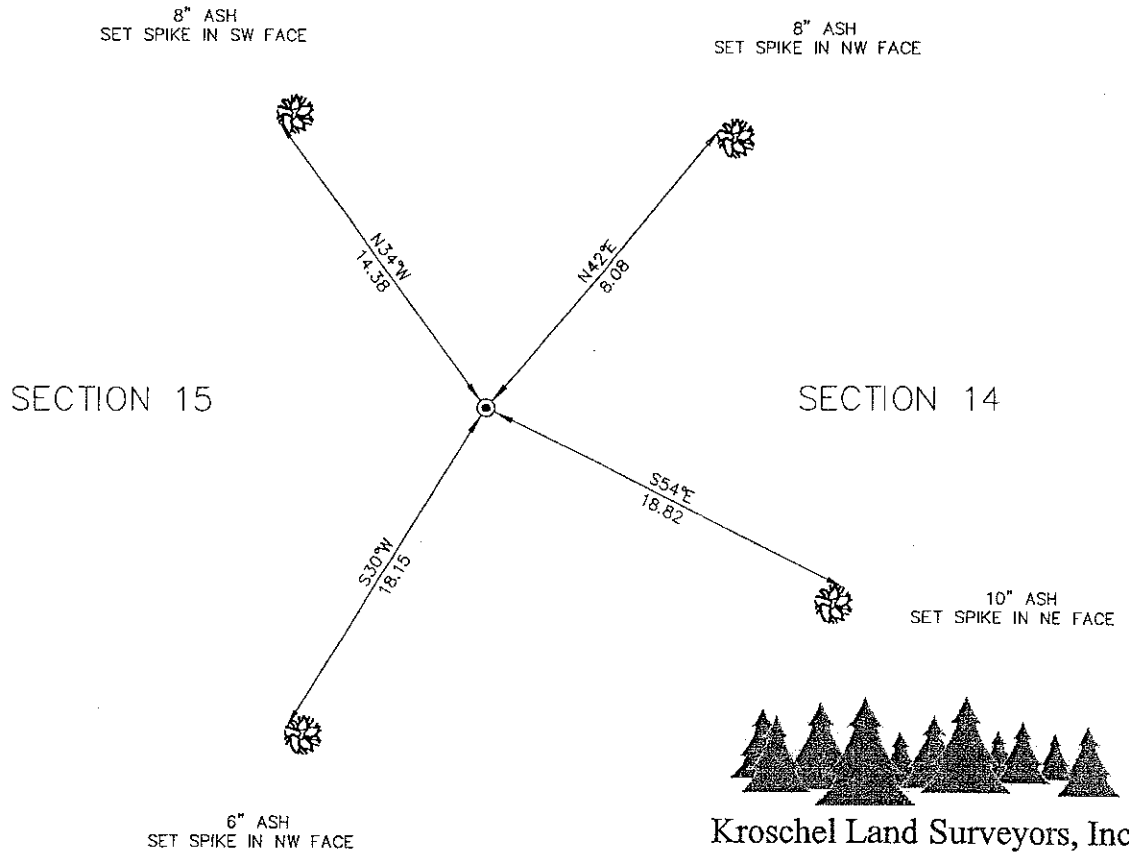
Note: NAD 1983, HARN 1996 Adjustment coordinates are NOT compatible with NAD 1983 coordinates

Note: 1 Meter = 3937/1200 U.S. Survey Feet

BEARINGS SHOWN TO REFERENCE TIES ARE MAGNETIC COMPASS BEARINGS  
DISTANCE UNITS FOR THIS DRAWING IS U.S. SURVEY FEET

SKETCH OF REFERENCE TIES  
NOT TO SCALE

KROSCHEL LAND SURVEYORS, INC.  
ASSUMES NO LIABILITY FOR THE ACCURACY OF THE GPS COORDINATES SHOWN HEREON.  
ALL COORDINATES AND DIMENSIONS SHOULD BE FIELD VERIFIED BY THE USER.



**Kroschel Land Surveyors, Inc.**

1639 Main Street North, Suite 6, Pine City, MN 55063  
Phone: 320-629-3267 Fax: 320-629-0176

Statement of evidence relative to this corner location is on back of page.

I hereby certify that this document and the data contained herein was prepared by me or under my direct supervision.

Tyler J. Kroschel

6-22-2011

Date

License No. 44490

- Land Surveyor
- County Surveyor

**OFFICE OF THE COUNTY SURVEYOR**  
County of Kanabec

I hereby certify that this document was filed in the County Surveyor's office at \_\_\_\_\_ .M. on the \_\_\_\_\_ day of \_\_\_\_\_ A.D., 20\_\_\_\_\_

County Surveyor \_\_\_\_\_

By \_\_\_\_\_, Deputy

DOCUMENT NO. \_\_\_\_\_

120/23

Statement of Evidence:

In October of 1851, Deputy Surveyor John M. Gay set a post to mark the East Quarter Corner of Section 15, Township 41 North, Range 23 West, 4th Principal Meridian.

Reference ties were taken to:

- 14 inch Ash at South 77 degrees East a distance of 33 links
- 14 inch Spruce at North 60 degrees West a distance of 19 links

All of the original Government corner evidence was searched for. None was found.

1916—A Township Supervisor's Road Order was filed in the Office of the County Auditor opening a Township road along the south line of the Northwest Quarter of Section 15.

1916—A Surveyor's Report was filed in the Office of the Town Clerk of Peace Township by Chas T. Peterson for a road survey he made along the south line of the Northwest Quarter of Section 15 and his survey notes state that he found the Government bearing trees at the East Quarter Corner of Section 15.

In April 2011, a survey was made around Section 15, Township 41 North, Range 23 West, 4th Principal Meridian for Peoples National Bank of Mora to locate existing monuments, lines of occupation and establish search areas.

On 4/1/2011, a search was made at the East Quarter Corner of Section 15 by digging with a shovel and using a metal locator. No evidence of the corner was found in the search. I set a 1/2" x 24" iron pipe with a plastic cap marked RLS 44490 on line and halfway between the Northeast and the Southeast corners of Section 15. Established reference ties and assigned Kanabec County Coordinates.

STATEMENT OF CONTROL

Survey Control used in the field.

MN/DOT GEODETIC DATABASE STATION NO. 14177 (NABEC MNDT)  
Horizontal Classification Order B

MN/DOT GEODETIC DATABASE STATION NO. 42426 (34 MN065)  
Horizontal Classification Order C



**Kroschel Land Surveyors, Inc.**

1639 Main Street North, Suite 6, Pine City, MN 55063  
Phone: 320-629-3267 Fax: 320-629-0176