

# CERTIFICATE OF LOCATION OF GOVERNMENT CORNER

EAST QUARTER Corner of Section 22, Township 41, Range 23, 4TH P.M.

STATE OF MINNESOTA, County of KANABEC

At the corner location shown on the sketch:

RESET THIS CORNER  
AND ESTABLISHED G.P.S. COORDINATES ON ITS LOCATION

Kanabec County U.S. Survey Feet Coordinates  
NAD 1983, HARN 1996 Adjustment  
Obtained by RTK GPS Observation

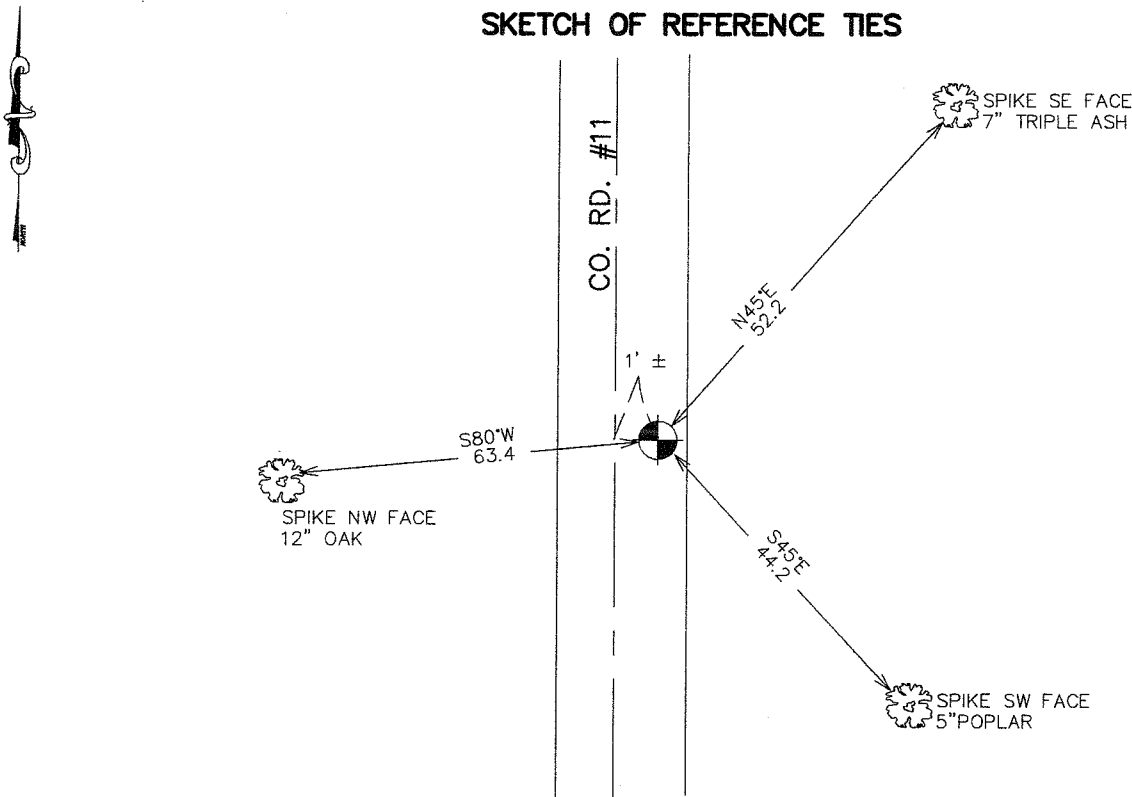
Northing= 204907.43

Easting= 418039.15

Note: NAD 1983, HARN 1996 Adjustment  
coordinates are NOT compatible with  
NAD 1983 coordinates

Note: 1 Meter=3937/1200 U.S. Survey Feet

## SKETCH OF REFERENCE TIES



Statement of evidence relative to this corner location is on back of page.

I hereby certify that this document and the data contained herein was prepared by me or under my direct supervision.

Ernest J. Bud  
Signature

4-12-2007  
Date

Registration No. Minn No 9808

Land Surveyor,  Professional Engineer

County Surveyor,  County Engineer

## OFFICE OF THE COUNTY RECORDER

County of \_\_\_\_\_

I hereby certify that this document was filed in the County Recorder's office at \_\_\_\_\_ M. on the \_\_\_\_\_ day of \_\_\_\_\_ A.D., 20\_\_\_\_

County Recorder \_\_\_\_\_

BY \_\_\_\_\_ Deputy

DOCUMENT NO. \_\_\_\_\_

EAST QUARTER CORNER SECTION 22, T41, R23

**STATEMENT OF EVIDENCE**

IN 1974 M.B. RUDE SET A MONUMENT FROM 3" X 3" OLD WOOD POST THAT HE FOUND IN AN EXCAVATION. POST WAS ROTTEN AND FIT THE CENTERLINE OF THE NORTH-SOUTH ROAD AND FIT A FENCE LINE TO THE WEST.

M.B. RUDE MADE A RESURVEY OF THE ROAD AND FOUND THE LOCATION OF SAID POST TO BE GOOD FOR THE CORNER.

OLD WOOD POST WAS SET MOST LIKELY BY JOHN M GIAG IN 1851 IN THE ORIGINAL US GOVERNMENT SURVEY.

THIS CORNER FALLS ON THE CENTERLINE OF THE COUNTY ROAD NO. 11 WHICH WAS RECONSTRUCTED IN <sup>1974</sup> AND ALL CORNERS DESTROYED.

IN APRIL 2007 E.G. RUD AND SONS RESET THIS CORNER BY RE-ESTABLISHING THE CENTERLINE OF COUNTY ROAD NO. 11 FROM THE SOUTHEAST CORNER OF SECTION 34 TO THE NORTHEAST CORNER OF SECTION 22 AS SURVEYED BY M.B. RUDE IN 1974.

A NEW CORNER WAS SET, NEW TIES TAKEN AND KANABEC COUNTY COORDINATES ESTABLISHED ON THIS LOCATION.