

CERTIFICATE OF LOCATION OF GOVERNMENT CORNER

NORTHEAST Corner of Section 27, Township 41, Range 23, 4TH P.M.

STATE OF MINNESOTA, County of KANABEC

At the corner location shown on the sketch:

RESET THIS CORNER
AND ESTABLISHED G.P.S. COORDINATES ON ITS LOCATION

Kanabec County U.S. Survey Feet Coordinates
NAD 1983, HARN 1996 Adjustment
Obtained by RTK GPS Observation

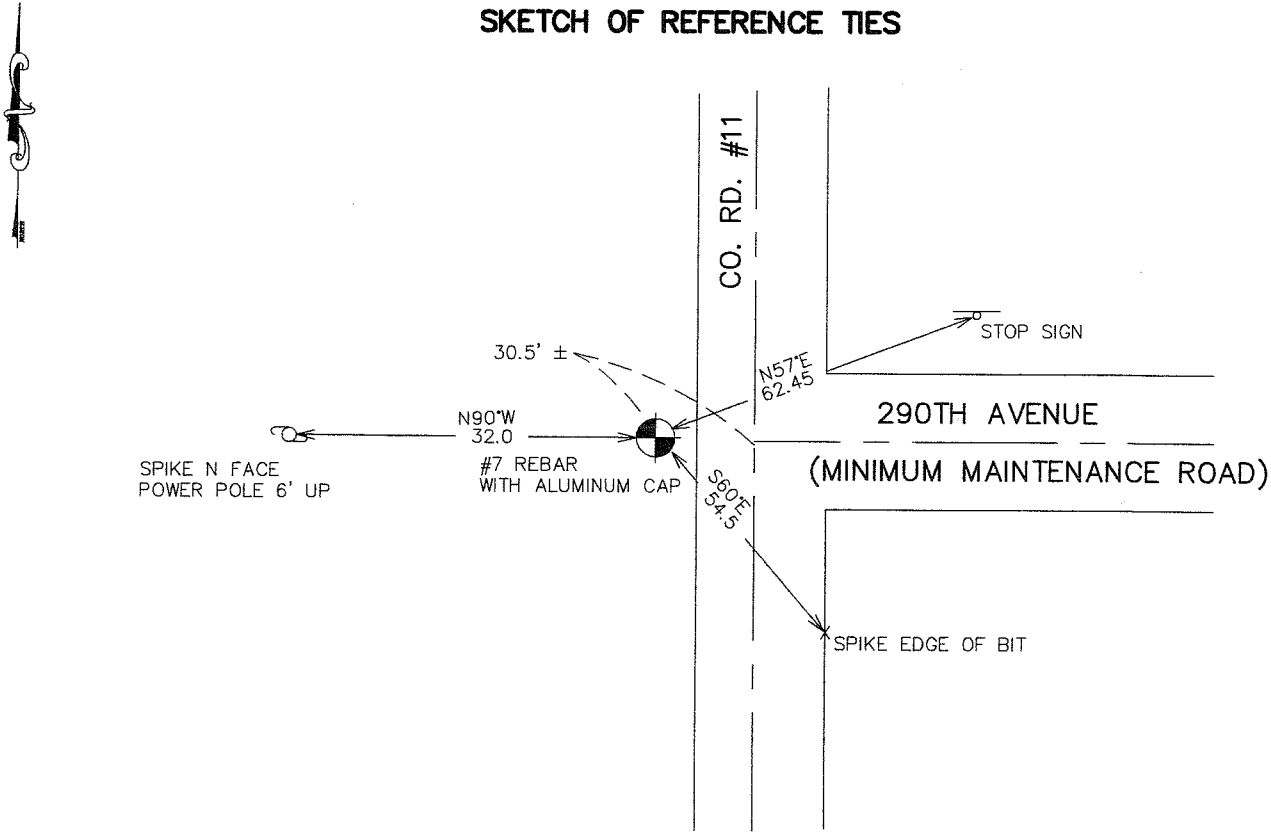
Northing= 202278.04

Easting= 418009.56

Note: NAD 1983, HARN 1996 Adjustment
coordinates are NOT compatible with
NAD 1983 coordinates

Note: 1 Meter=3937/1200 U.S. Survey Feet

SKETCH OF REFERENCE TIES



Statement of evidence relative to this corner location is on back of page.

I hereby certify that this document and the data contained herein was prepared by me or under my direct supervision.

Ernest J. Rud 4-12-2007
Signature Date

Registration No. Minn No 9808

Land Surveyor, Professional Engineer

County Surveyor, County Engineer

OFFICE OF THE COUNTY RECORDER

County of _____

I hereby certify that this document was filed in the County Recorder's office at _____ M. on the _____ day of _____ A.D., 20____

County Recorder _____

BY _____ Deputy

DOCUMENT NO. _____

NORTHEAST CORNER SECTION 27, T41, R23

STATEMENT OF EVIDENCE

IN 1974 M.B. RUDE SET A MONUMENT FROM 8" X 2" X 1" HUB FOUND IN EXCAVATION. HUB FITS X CENTERLINE OF THE NORTH-SOUTH AND EAST ROADS GOOD AND FENCE LINE TO THE WEST.

ALSO M.B. RUDE MADE A RESURVEY OF THIS COUNTY ROAD 11 AND FOUND THIS LOCATION GOOD FOR THE CORNER.

THIS CORNER FALLS ON THE CENTERLINE OF COUNTY ROAD NO. 11 WHICH WAS REGRADED IN 1977 AND THIS CORNER WAS DESTROYED. IN APRIL 2007 E.G. RUD AND SONS RESET THIS CORNER BY REESTABLISHING THE CENTERLINE OF COUNTY ROAD 11 FROM THE SOUTHEAST CORNER OF SECTION 34 TO THE NORTHEAST CORNER OF SECTION 22 FROM M.B. RUDS SURVEY IN 1974. A NEW CORNER WAS SET, TIES TAKEN AND KANABEC COUNTY COORDINATES ESTABLISHED ON THIS POSITION.