

CERTIFICATE OF LOCATION OF GOVERNMENT CORNER

EAST QUARTER Corner of Section 27, Township 41, Range 23, 4TH P.M.

STATE OF MINNESOTA, County of KANABEC

At the corner location shown on the sketch:

RESET THIS CORNER
AND ESTABLISHED G.P.S. COORDINATES ON ITS LOCATION

Kanabec County U.S. Survey Feet Coordinates
NAD 1983, HARN 1996 Adjustment
Obtained by RTK GPS Observation

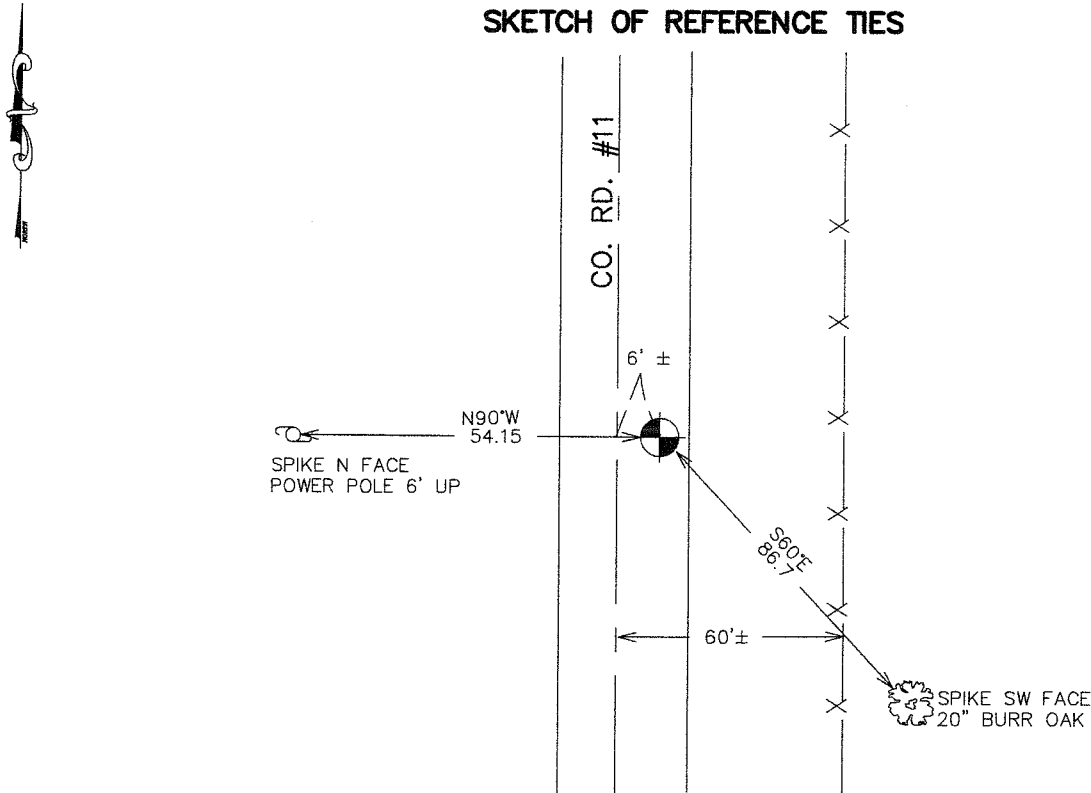
Northing= 199636.23

Easting= 418044.74

Note: NAD 1983, HARN 1996 Adjustment
coordinates are NOT compatible with
NAD 1983 coordinates

Note: 1 Meter=3937/1200 U.S. Survey Feet

SKETCH OF REFERENCE TIES



Statement of evidence relative to this corner location is on back of page.

I hereby certify that this document and the data contained herein was prepared by me or under my direct supervision.

Ernest J. Rud 4-12-2007
Signature Date

Registration No. MINN No 9808

Land Surveyor, Professional Engineer
 County Surveyor, County Engineer

OFFICE OF THE COUNTY RECORDER

County of _____

I hereby certify that this document was filed in the County Recorder's office at _____ M. on the _____ day of _____ A.D., 20____

County Recorder _____

BY _____ Deputy

DOCUMENT NO. _____

EAST QUARTER CORNER SECTION 27, T41, R23

STATEMENT OF EVIDENCE

M.B. RUDE SET PIPE FOR CORNER FROM HIS RESURVEY OF COUNTY ROAD 11. PIPE FITS CENTERLINE OF NORTH SOUTH ROAD GOOD AND IS ABOUT 2' NORTH OF THE OCCUPATION LINE TO THE EAST.

M.B. RUDE DID NOT SET A CAST ALUMINUM MONUMENT AS THE LOCATION OF THE CORNER IS DIRECTLY ABOVE A ~~CAST IRON MONUMENT~~ WHICH IS ONLY 4" BELOW THE SURFACE OF THE ROAD. *Culvert*

THIS CORNER FALLS ON THE CENTERLINE OF COUNTY ROAD NO. 11 WHICH WAS RECONSTRUCTED IN ¹⁹⁷⁴ AND THIS CORNER DESTROYED.

IN APRIL 2007 E.G. RUD AND SONS RESET THIS CORNER BY REESTABLISHING THE ALIGNMENT OF COUNTY ROAD NO. 11 FROM THE SOUTHEAST CORNER OF SECTION 34 TO THE NORTHEAST CORNER OF SECTION 22 FROM M.B. RUDES SURVEY DONE IN 1974. A NEW CORNER WAS RESET AND KANABEC COUNTY COORDINATES ESTABLISHED ON THIS POSITION.