

# CERTIFICATE OF LOCATION OF GOVERNMENT CORNER

NORTHEAST Corner of Section 34, Township 41, Range 23, 4TH P.M.

STATE OF MINNESOTA, County of KANABEC

At the corner location shown on the sketch:

SET A NEW MONUMENT  
AND ESTABLISHED G.P.S. COORDINATES ON ITS LOCATION

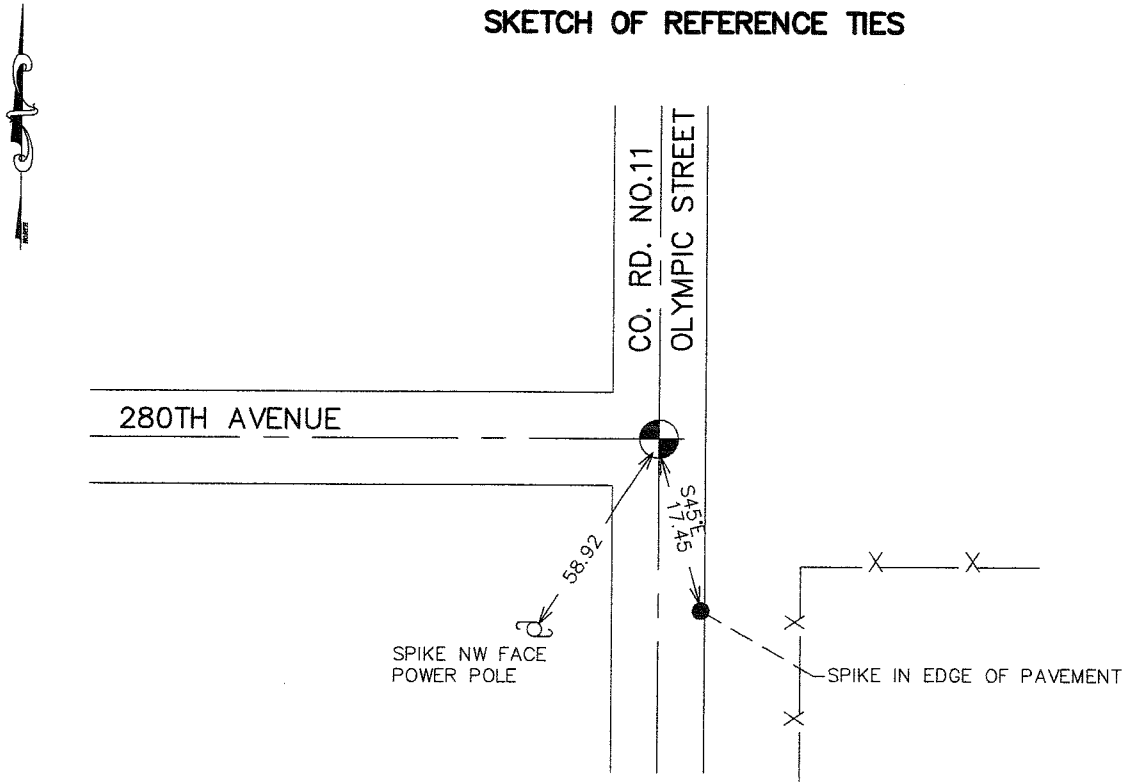
Kanabec County U.S. Survey Feet Coordinates  
NAD 1983, HARN 1996 Adjustment  
Obtained by RTK GPS Observation

Northing= 196998.78  
Easting= 418077.93

Note: NAD 1983, HARN 1996 Adjustment  
coordinates are NOT compatible with  
NAD 1983 coordinates

Note: 1 Meter=3937/1200 U.S. Survey Feet

## SKETCH OF REFERENCE TIES



Statement of evidence relative to this corner location is on back of page.

I hereby certify that this document and the data contained herein was prepared by me or under my direct supervision.

Ernest L. Rud 5-1-2007  
Signature Date

Registration No. MINN No 9808

Land Surveyor,  Professional Engineer

County Surveyor,  County Engineer

### OFFICE OF THE COUNTY RECORDER

County of \_\_\_\_\_

I hereby certify that this document was filed in the County Recorder's office at \_\_\_\_\_ M. on the \_\_\_\_\_ day of \_\_\_\_\_ A.D., 20 \_\_\_\_\_

County Recorder \_\_\_\_\_

BY \_\_\_\_\_ Deputy

DOCUMENT NO. \_\_\_\_\_

NORTHEAST CORNER SECTION 34, T41, R23

**STATEMENT OF EVIDENCE**

IN 1974 M.B. RUDE DUG WITH A BACKHOE OCTOBER 4, 1974 AND FOUND 1/2" REROD PER CERTIFICATE NO. 157. FOUND NO OTHER EVIDENCE, REPLACED WITH A CAST ALUMINUM MONUMENT.

THIS CORNER FALLS ON THE CENTERLINE OF COUNTY ROAD NO. 11 AND 280TH AVENUE GOING WEST. COUNTY ROAD NO. 11 WAS RECONSTRUCTED IN 1977 AND THIS CORNER DESTROYED.

IN APRIL 2007 E.G. RUD AND SONS REESTABLISHED THIS CORNER BASED ON THE CENTERLINE ALIGNMENT OF M.B. RUDES RESURVEY IN 1974. A P.K. WAS FOUND AT THIS LOCATION AND FIT.

A NEW CORNER WAS SET AND KANABEC COUNTY COORDINATES WERE ESTABLISHED ON THIS POSITION.