

CERTIFICATE OF LOCATION OF GOVERNMENT CORNER

EAST QUARTER Corner of Section 34, Township 41, Range 23, 4TH P.M.

STATE OF MINNESOTA, County of KANABEC

At the corner location shown on the sketch:

FOUND THIS CORNER
AND ESTABLISHED G.P.S. COORDINATES ON ITS LOCATION

Kanabec County U.S. Survey Feet Coordinates
NAD 1983, HARN 1996 Adjustment
Obtained by RTK GPS Observation

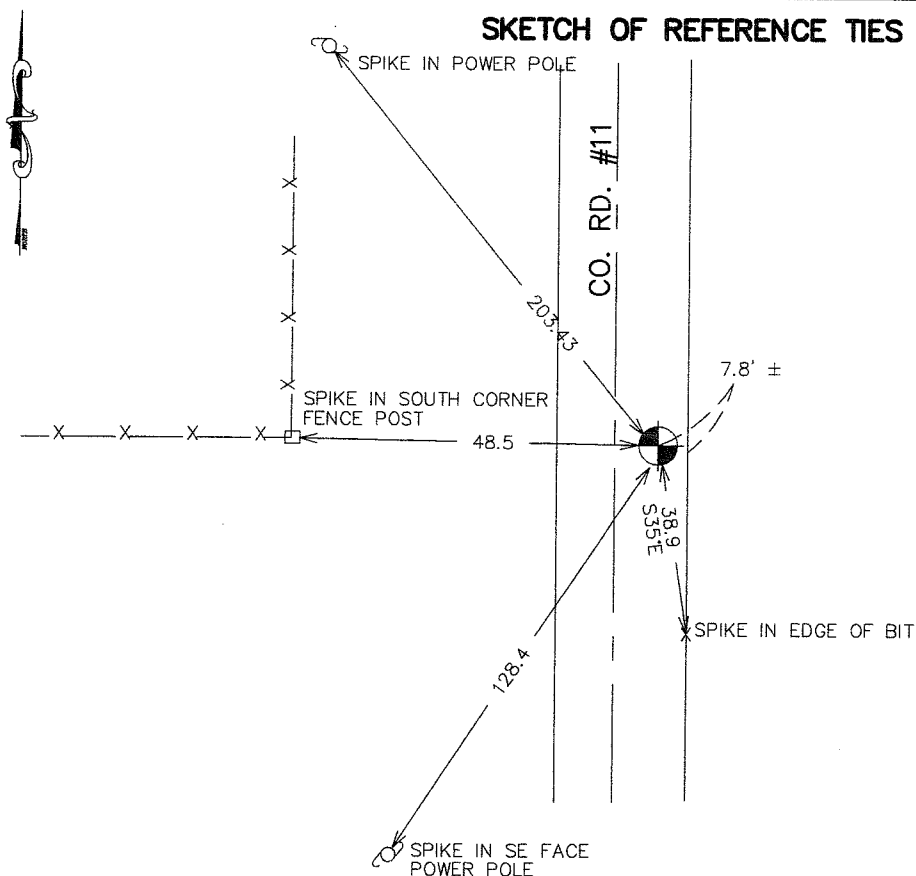
Northing= 194367.11

Easting= 417992.91

Note: NAD 1983, HARN 1996 Adjustment
coordinates are NOT compatible with
NAD 1983 coordinates

Note: 1 Meter=3937/1200 U.S. Survey Feet

SKETCH OF REFERENCE TIES



Statement of evidence relative to this corner location is on back of page.

I hereby certify that this document and the data contained herein was prepared by me or under my direct supervision.

Ernest J. Reed 4-12-2007
Signature Date

Registration No. Minn No. 9808

Land Surveyor, Professional Engineer

County Surveyor, County Engineer

OFFICE OF THE COUNTY RECORDER

County of _____

I hereby certify that this document was filed in the County Recorder's office at _____ M. on the _____ day of _____ A.D., 20 _____

County Recorder _____

BY _____ Deputy

DOCUMENT NO. _____

EAST QUARTER CORNER SECTION 34, T41, R23

STATEMENT OF EVIDENCE

IN 1974 M.B. RUDE FOUND A BOLT SPIKE IN CENTERLINE OF NORTH-SOUTH ROAD AND ON FENCE LINE WEST. BOLT SPIKE FALLS 5.40 FEET NORTH OF SPLIT BETWEEN NORTHEAST AND SOUTHEAST CORNERS. DUG AT BOLT SPIKE LOCATION AND ALSO 5.40 FEET SOUTH, AT SPLIT LOCATION ON OCTOBER 16, 1974, BUT FOUND NO ADDITIONAL EVIDENCE. REPLACED WITH CAST ALUMINUM MONUMENT AT THIS LOCATION. FITS THE LINES OF OCCUPATION WELL.

THIS CORNER FALLS ON THE CENTERLINE OF COUNTY ROAD NO. 11 WHICH WAS REBUILT IN 1977 AND ALL SECTION CORNERS DESTROYED.

IN APRIL 2007 E.G. RUD AND SONS REESTABLISHED THE ALIGNMENT OF COUNTY ROAD 11 FROM THE SOUTHEAST CORNER OF SECTION 34 TO THE NORTHEAST CORNER OF SECTION 22 FROM M.B. RUDES SURVEY AND RESET THIS CORNER. KANABEC COUNTY COORDINATES WERE ESTABLISHED ON THIS CORNER AND NEW TIES TAKEN.