

4123064

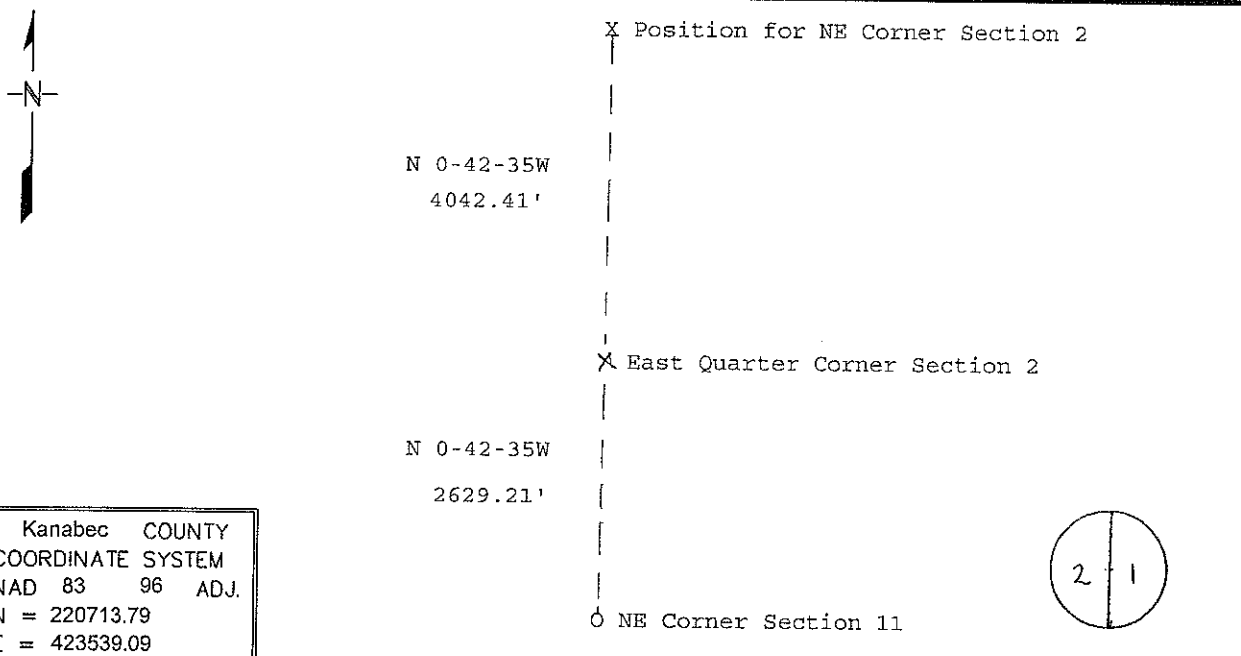
Index No. C-21

# CERTIFICATE OF LOCATION OF GOVERNMENT CORNER

East Quarter Corner of Section 2, Township 41N, Range 23W  
4th Principal Meridian, State of Minnesota, County of Kanabec

At the corner location shown on the sketch:

- On \_\_\_\_\_ found on \_\_\_\_\_  
DATE .
- left monument as found,  lowered monument,  removed monument (explain)
- On 12/17/09 Placed NOTHING  
DATE



Kanabec COUNTY  
COORDINATE SYSTEM  
NAD 83 96 ADJ.  
N = 220713.79  
E = 423539.09

Statement of evidence for this corner location is on back of this page.

2/10/10 JDW  
SFT00056

I certify that this document was researched and prepared by me or under my direct supervision.

SIGNATURE [Signature] DATE 12/3/2010 License Number 16098

Title:  Land Surveyor  Professional Engineer  County Surveyor  County Engineer

**East Quarter Corner Section 2, Township 41 North, Range 23 West**

The Department of Natural Resources, Division of Lands and Minerals, contacted the following offices for information regarding this corner:

MN Secretary of State  
Kanabec County Surveyor  
Kanabec County Recorder's Office  
Kanabec County Engineer's Office  
E.G. Rud & Sons, Inc., Land Surveyors

1851 The US General Land Office field notes, on file in the Secretary of State's Office, show this corner to be marked with a post and the following bearing trees were marked:

Elm 7" N83°E 15 links (9.9')  
Balsam 6" S 27°W 26 links (17.16')

2009 In December, the DNR survey crew searched for this corner at the computed lost position of the corner and located the westerly edge of a small pond in the area of the corner. No evidence of the original GLO survey was found. After analyzing the location of the pond it was clear that GLO couldn't have run this line and missed the pond. The pond extends about 270' westerly and 400' easterly of the corner. The lost position for the corner falls in the pond on the westerly edge and no monument was set.

Northeast Corner Section 2 bears N00°42'35"W 4042.41'  
Northeast Corner Section 11 bears S00°42'35"E 2629.21'

For more information on our survey in this area, please contact MN DNR, Division of Lands and Minerals, Survey Section, 1601 Minnesota Drive, Brainerd, MN 56401

---