

# CERTIFICATE OF LOCATION OF GOVERNMENT CORNER

N 1/4 Corner of Section 12, Township 41, Range 23 4<sup>TH</sup> P.M.

STATE OF MINNESOTA, County of KANABEC

At the corner location shown on the sketch:

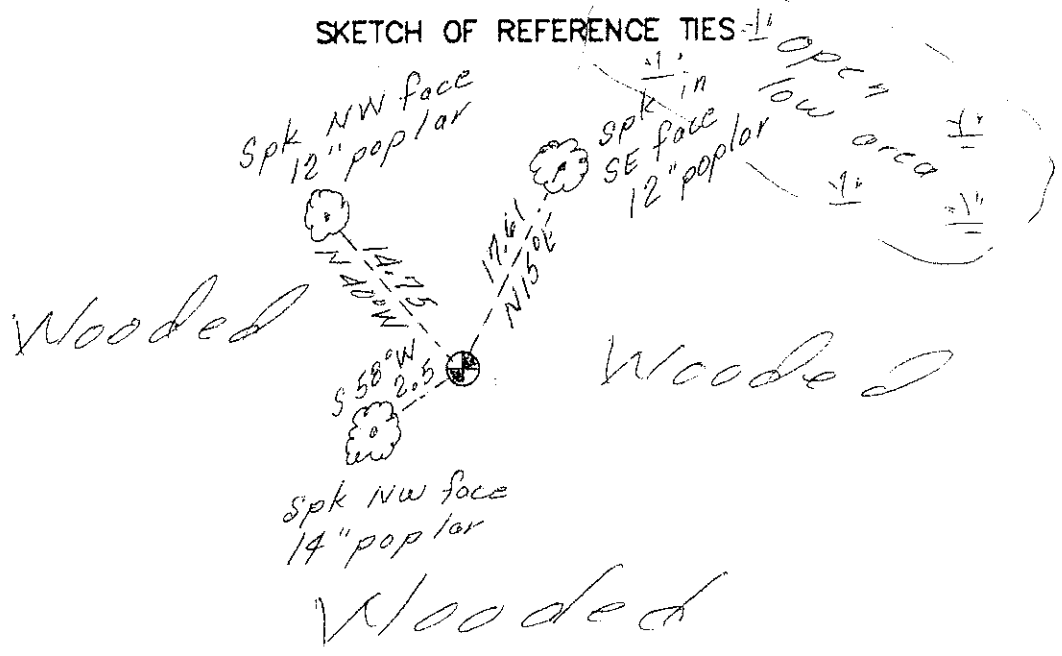
*Set # 7 rebar with aluminum cap on Dec 7, 2012*

Kanabec County U.S. Survey Feet Coordinates  
NAD 1983, HARN 1996 Adjustment  
Obtained by RTK GPS Observation

Northing= 218042.11  
Easting= 426212.57

Note: NAD 1983, HARN 1996 Adjustment coordinates are NOT compatible with NAD 1983 coordinates  
Note: 1 Meter=3937/1200 U.S. Survey Feet

### SKETCH OF REFERENCE TIES



Statement of evidence relative to this corner location is on back of page.

I hereby certify that this document and the data contained herein was prepared by me or under my direct supervision.

*Ernest L. Rud* 6-5-2013  
Signature Date

Registration No. 9808

- Land Surveyor,  Professional Engineer
- County Surveyor,  County Engineer

### OFFICE OF THE COUNTY RECORDER

County of \_\_\_\_\_

I hereby certify that this document was filed in the County Recorder's office at \_\_\_\_\_ M. on the \_\_\_\_\_ day of \_\_\_\_\_ A.D., 20\_\_\_\_

County Recorder \_\_\_\_\_

BY \_\_\_\_\_ Deputy

DOCUMENT NO. \_\_\_\_\_

STATEMENT OF EVIDENCE - 4123063

North Quarter Corner Section 12

In October of 1851, Deputy Surveyor John M. Gley set a post to mark the North Quarter Corner of Section 12, Township 41 North, Range 23 West, 4<sup>th</sup> Principal Meridian.

Reference ties were taken to:

6 inch Balsam at South 5 degrees West a distance of 19 links

8 inch Balsam at North 3.5 degrees West a distance of 37 links

All of the original Government corner evidence was search for. None was found.

No records of survey work being done on this line could be found at Kanabec County Offices.

This corner falls in a heavily wooded area with no visible lines of occupation. Russell Koch (land owner in northwest quarter) did not have any knowledge of the corner location.

On December 7, 2012 a #7 rebar with an aluminum cap was set, ties taken and Kanabec County corners established using GPS equipment.