

4123062

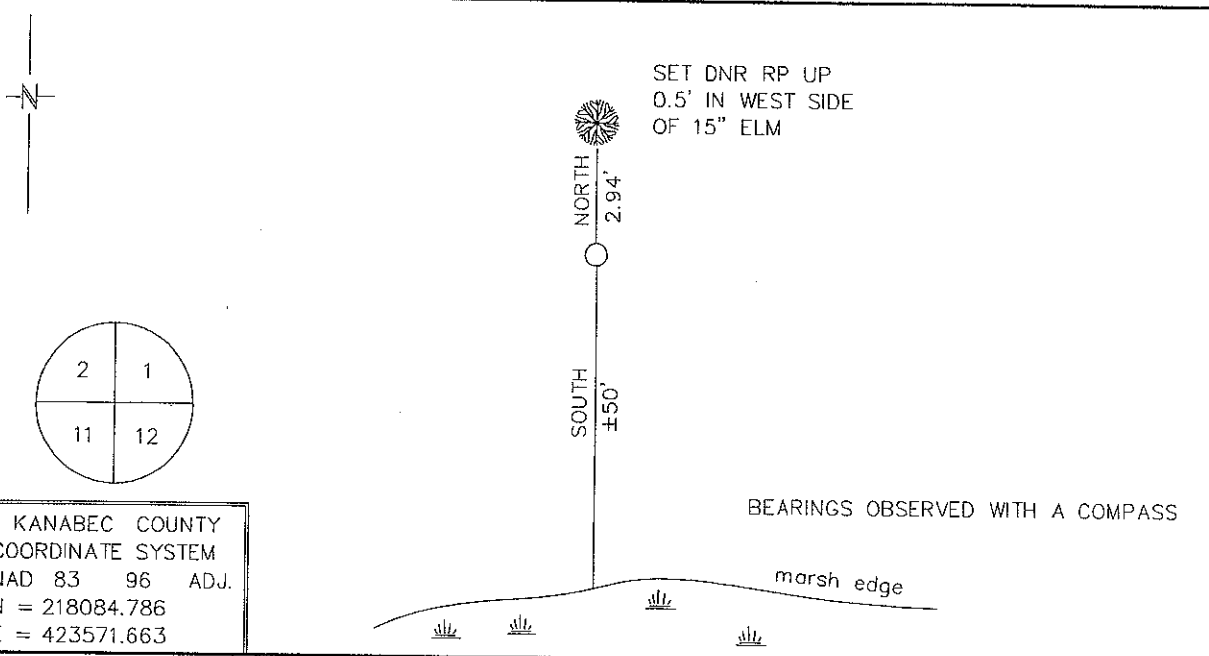
Index No. E-21

CERTIFICATE OF LOCATION OF GOVERNMENT CORNER

NORTHEAST Corner of Section 11, Township 41N, Range 23W
4TH Principal Meridian, State of Minnesota, County of KANABEC

At the corner location shown on the sketch:

- On _____ found a _____
DATE
- left monument as found, lowered monument, removed monument (explain)
- On 1/12/2010 Placed a 3/4" X 24" REBAR WITH CAP STAMPED "MN DNR LS 16098"
DATE



Statement of evidence for this corner location is on back of this page. 2/09/2010
SFT00056

I certify that this document was researched and prepared by me or under my direct supervision.

SIGNATURE *John D. Walker* DATE 12/3/2010 License Number 16098

Title: Land Surveyor Professional Engineer County Surveyor County Engineer

Northeast Corner Section 11, Township 41 North, Range 23 West

The Department of Natural Resources, Division of Lands and Minerals, contacted the following offices for information regarding this corner:

MN Secretary of State
Kanabec County Surveyor
Kanabec County Recorder's Office
Kanabec County Engineer's Office
E.G. Rud & Sons, Inc., Land Surveyors

- 1851 The US General Land Office field notes, on file in the Secretary of State's Office, show this corner to be marked with a post and the following bearing trees were marked:
Birch 7" N83°E 3 links (1.98')
Birch 6" N 44°W 25 links (16.5')
GLO located a creek 5 chains (330') south, 7.5 chains (495') east and 10.39 chains (685.74') west of the corner.
- 2009 In December, the DNR survey crew searched for this corner at the computed lost position of the corner and located the centerline of the creek south, east and west of the corner area. The creek calls didn't fit well enough to put the corner back in using the distances from them. No evidence of the original GLO bearing trees was found. The corner was established lost at a double proportion position using the Northeast Corner Section 2, Northeast Corner Section 12, Northeast Corner Section 14 and the Northeast Corner Section 10.
- 2010 In January, the DNR survey crew set a ¾"x24" rebar with a plastic cap stamped MN DNR LS 16098 was set to mark the corner location. The distances measured to the creek were 300'+/- south, 555' +/- east and 725'+/- west.
Northeast Corner Section 2 bears N00°42'35"W 6671.62' (6699' GLO)
Northeast Corner Section 12 bears S89°04'31"E 5282.56' (5230.5' GLO)
Northeast Corner Section 14 bears S01°23'17"W 5258.42' (5280' GLO)
Northeast Corner Section 10 bears N89°07'32"W 5371.88' (5318.94' GLO)

For more information on our survey in this area, please contact MN DNR, Division of Lands and Minerals, Survey Section, 1601 Minnesota Drive, Brainerd, MN 56401