

CERTIFICATE OF LOCATION OF GOVERNMENT CORNER

N¹/₄ Corner of Section 13, Township 41, Range 24, 4TH P.M.

STATE OF MINNESOTA, County of KANABEC

At the corner location shown on the sketch:

On 1-26-12 found a 3/4" x 6' rebar at East of fence line in swamp.

Kanabec County U.S. Survey Feet Coordinates
NAD 1983, HARN 1996 Adjustment
Obtained by RTK GPS Observation

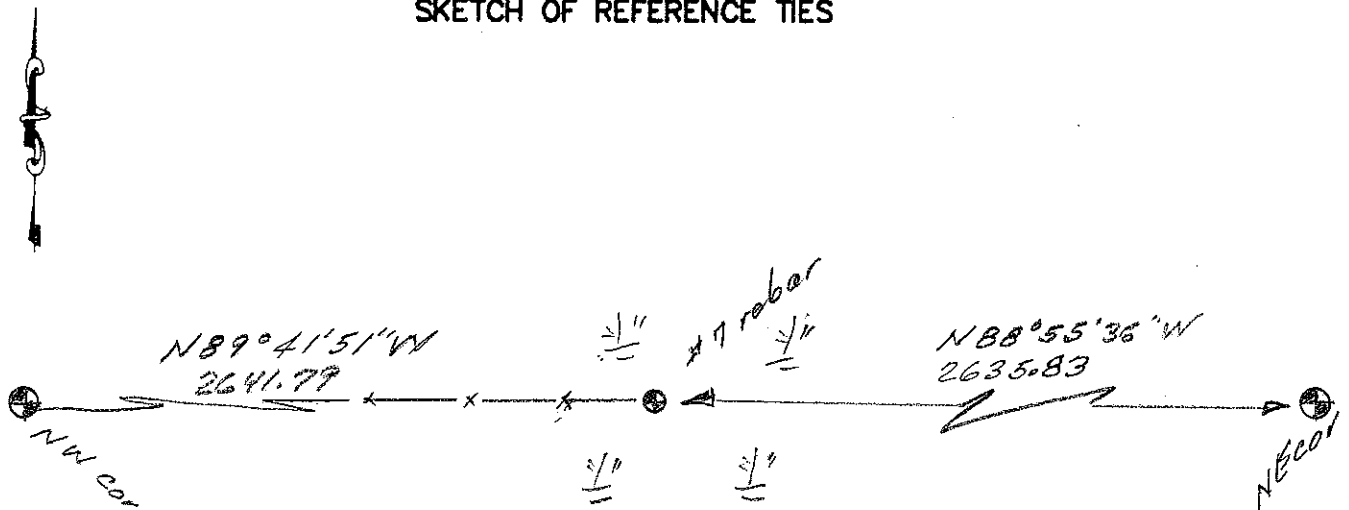
Northing= 212813.96

Easting= 426086.04

Note: NAD 1983, HARN 1996 Adjustment coordinates are NOT compatible with NAD 1983 coordinates

Note: 1 Meter=3937/1200 U.S. Survey Feet

SKETCH OF REFERENCE TIES



Statement of evidence relative to this corner location is on back of page.

I hereby certify that this document and the data contained herein was prepared by me or under my direct supervision.

Ernest J. Reed
Signature

11-27-12
Date

Registration No. 9808

- Land Surveyor, Professional Engineer
 County Surveyor, County Engineer

OFFICE OF THE COUNTY RECORDER

County of _____

I hereby certify that this document was filed in the County Recorder's office at _____ M. on the _____ day of _____ A.D., 20____

County Recorder _____

BY _____ Deputy

DOCUMENT NO. _____

STATEMENT OF EVIDENCE: NORTH QUARTER 13-41-42 4123060

The original government post was set by Deputy Surveyor, John M. Gley on October 8, 1851 and two bearing trees noted as:

7" Tamarack bearing North 81 degrees East at 5 links

6" Tamarack bearing South 83.5 degrees North at 20 links

No visible evidence for corner or bearing trees could be found.

Research at the Kanabec County offices provided no records of any subsequent surveys.

On January 26, 2012, E.G. Rud & Sons ran a survey around Section 13 to survey the North $\frac{1}{2}$ of the Northwest $\frac{1}{4}$ of the Northwest $\frac{1}{4}$.

This corner falls in a swamp and a 4 foot by #7 rebar with an aluminum cap was found at the end of a fence running west. This position was 3 feet east and 17.1 feet north of a lost position.

The existing monument and fence line was determined to be the best evidence for the location of this corner.

Kanabec County coordinates established on this position.