

4123059

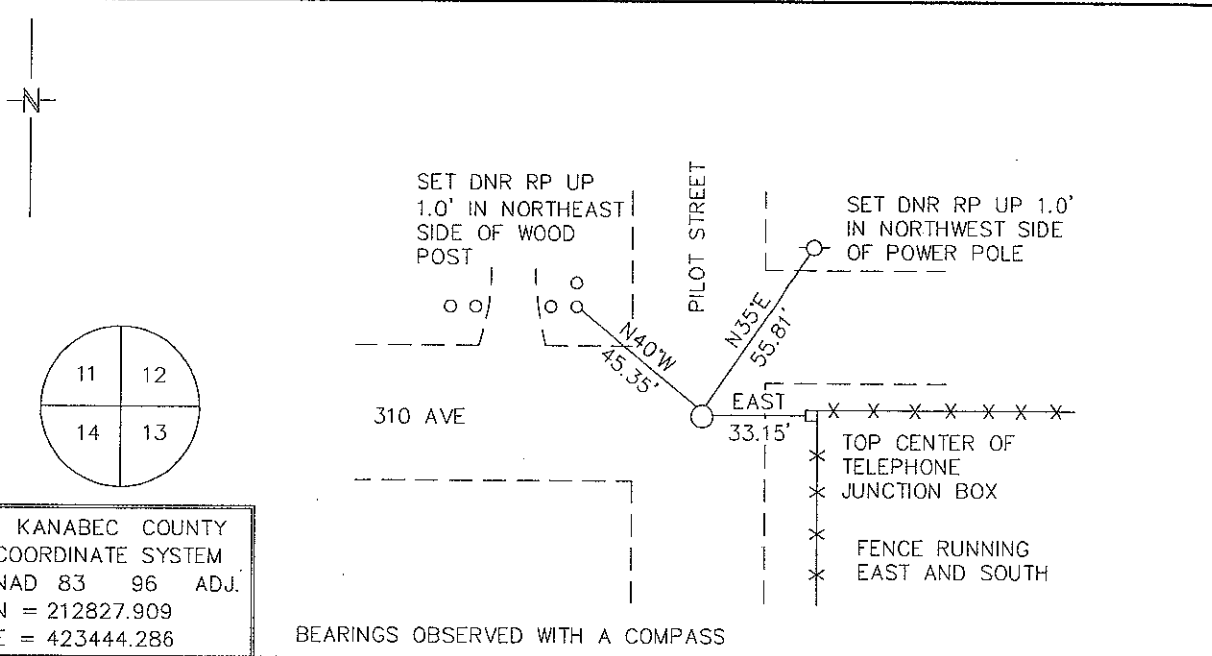
Index No. J-21

CERTIFICATE OF LOCATION OF GOVERNMENT CORNER

NORTHEAST Corner of Section 14, Township 41N, Range 23W
4TH Principal Meridian, State of Minnesota, County of KANABEC

At the corner location shown on the sketch:

- On _____ found a _____
DATE
- left monument as found, lowered monument, removed monument (explain)
- On 1/12/2010 Placed a 3/4" X 12" REBAR WITH CAP STAMPED "MN DNR LS 16098"
DATE
AT INTERSECTION OF ROADS N-S-W. AND FENCE LINE EAST.



Statement of evidence for this corner location is on back of this page.

2/09/2010
SFT00056.00.00.01

I certify that this document was researched and prepared by me or under my direct supervision.

SIGNATURE John D. Walker DATE 12/3/2010 License Number 16098

Title: Land Surveyor Professional Engineer County Surveyor County Engineer

Northeast Corner Section 14, Township 41 North, Range 23 West

The Department of Natural Resources, Division of Lands and Minerals, contacted the following offices for information regarding this corner:

MN Secretary of State
Kanabec County Surveyor
Kanabec County Recorder's Office
Kanabec County Engineer's Office
E.G. Rud & Sons, Inc., Land Surveyors

- 1851 The US General Land Office field notes, on file in the Secretary of State's Office, show this corner to be marked with a post and the following bearing trees were marked:
Elm 12" S 16 1/2°E 82 links (54.12')
Oak 12" N 05°W 100 links (66')
- 1975 Terry Johnson surveyed section 10 and shows this corner 5288.02' easterly of the southeast corner section 10. No mention of what was at the corner. We received a copy of Terry's worksheet from Ernie Rud.
- 2009 In December, the DNR survey crew searched for this corner at the distance from the found southeast corner of section 10. This fit the road intersection north-south and west and also a fence line east. No evidence of the original GLO bearing trees was found. The corner was established at obliterated location of the road intersection.
- 2010 In January, the DNR survey crew set a 3/4"x12" rebar with a plastic cap stamped with MN DNR LS 16098 on it to mark the corner location.
Northeast Corner Section 11 bears N01°23'17"E 5258.42' (5280' GLO)
Northeast Corner Section 13 bears S89°18'45"E 5277.50' (5250.96' GLO)
Northeast Corner Section 23 bears S00°53'39"W 5283.96' (5280' GLO)
Northeast Corner Section 14 bears N89°15'16"W 5288.43' (5292.54' GLO)

For more information on our survey in this area, please contact MN DNR, Division of Lands and Minerals, Survey Section, 1601 Minnesota Drive, Brainerd, MN 56401