

CERTIFICATE OF LOCATION OF GOVERNMENT CORNER

NORTHEAST Corner of Section 26, Township 41, Range 23, 4TH P.M.

STATE OF MINNESOTA, County of KANABEC

At the corner location shown on the sketch:

FOUND THIS CORNER AND ESTABLISHED G.P.S. COORDINATES ON ITS LOCATION

Kanabec County U.S. Survey Feet Coordinates
NAD 1983, HARN 1996 Adjustment
Obtained by RTK GPS Observation

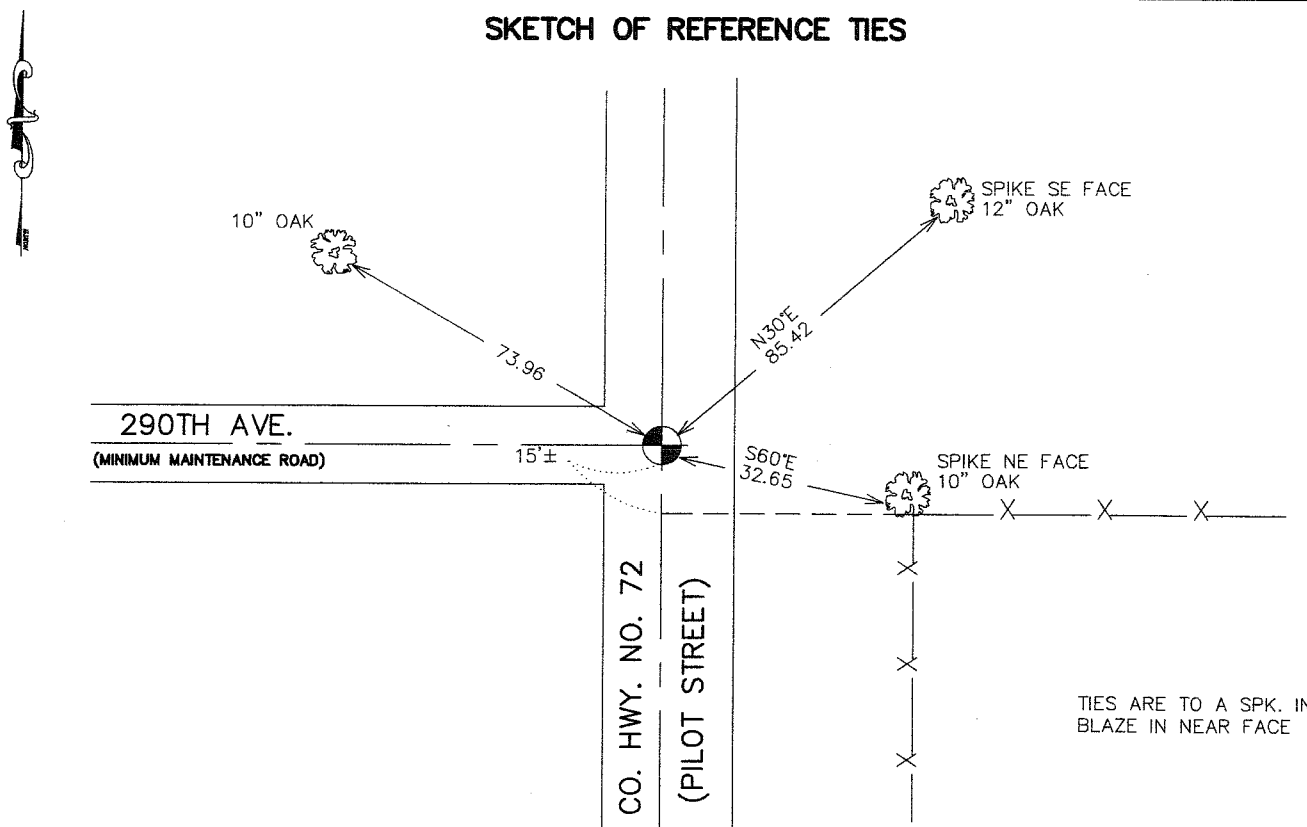
Northing= 202246.31

Easting= 423340.08

Note: NAD 1983, HARN 1996 Adjustment coordinates are NOT compatible with NAD 1983 coordinates

Note: 1 Meter=3937/1200 U.S. Survey Feet

SKETCH OF REFERENCE TIES



Statement of evidence relative to this corner location is on back of page.

I hereby certify that this document and the data contained herein was prepared by me or under my direct supervision.

Ernest Alred
Signature

4-12-2007
Date

OFFICE OF THE COUNTY RECORDER

County of _____

I hereby certify that this document was filed in the County Recorder's office at _____ M. on the _____ day of _____ A.D., 20____

County Recorder _____

BY _____ Deputy

DOCUMENT NO. _____

Registration No. 9808

Land Surveyor, Professional Engineer

County Surveyor, County Engineer

NORTHEAST CORNER SECTION 26, T41, R23

STATEMENT OF EVIDENCE

ALL OF THE ORIGINAL BEARING TREES ARE NOW GONE.

THERE IS NO RE-SURVEY DATA ON FILE FOR THIS CORNER.

IN AUGUST OF 1988, M.B. RUDE RAN A SURVEY FROM THE NORTHEAST CORNER OF SECTION 23 TO THE SOUTHEAST CORNER OF SECTION 35 TO LOCATE THE EXISTING MONUMENTS, LINES OF OCCUPATION AND SEARCH AREAS.

THIS CORNER FALLS IN COUNTY HIGHWAY NO. 72 AND THE TOWNSHIP ROAD WEST.

ON AUGUST 21, 1988, M.B. RUDE MADE AN EXCAVATION WITH THE COUNTY BACKHOE AT THIS LOCATION. THE EXCAVATION WAS 15 FEET SQUARE DOWN TO THE NATURAL GROUND LEVEL.

A 1" IRON PIN WAS FOUND IN THE EXCAVATION WHICH FIT THE CENTERLINE INTERSECTION AND WAS ACCEPTED AS THE PERPETUATED LOCATION OF THE ORIGINAL CORNER LOCATION.

IN APRIL 2007 E.G. RUD AND SONS FOUND A CAPPED REBAR AT THIS LOCATION, TOOK NEW TIES AND ESTABLISHED KANABEC COUNTY COORDINATES ON THIS POSITION.