

# CERTIFICATE OF LOCATION OF GOVERNMENT CORNER

EAST QUARTER Corner of Section 26, Township 41, Range 23, 4TH P.M.

STATE OF MINNESOTA, County of KANABEC

At the corner location shown on the sketch:

FOUND THIS CORNER  
AND ESTABLISHED G.P.S. COORDINATES ON ITS LOCATION

Kanabec County U.S. Survey Feet Coordinates  
NAD 1983, HARN 1996 Adjustment  
Obtained by RTK GPS Observation

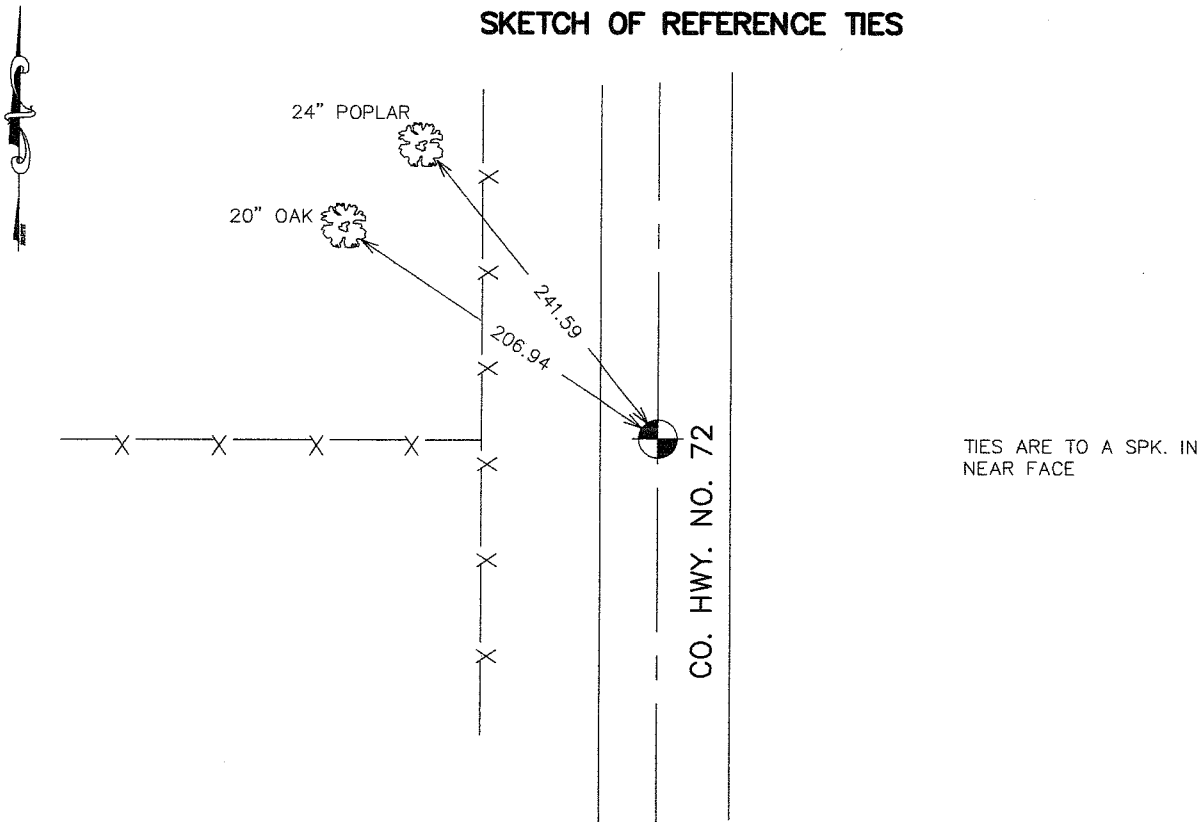
Northing= 199616.31

Easting= 423300.34

Note: NAD 1983, HARN 1996 Adjustment  
coordinates are NOT compatible with  
NAD 1983 coordinates

Note: 1 Meter=3937/1200 U.S. Survey Feet

## SKETCH OF REFERENCE TIES



TIES ARE TO A SPK. IN  
NEAR FACE

Statement of evidence relative to this corner location is on back of page.

I hereby certify that this document and the data contained herein was prepared by me or under my direct supervision.

Ernest Glad 4-12-2007  
Signature Date

Registration No. Minn No 9808

Land Surveyor,  Professional Engineer

County Surveyor,  County Engineer

## OFFICE OF THE COUNTY RECORDER

County of \_\_\_\_\_

I hereby certify that this document was filed in the County Recorder's office at \_\_\_\_\_ M. on the \_\_\_\_\_ day of \_\_\_\_\_ A.D., 20\_\_\_\_

County Recorder \_\_\_\_\_

BY \_\_\_\_\_ Deputy

DOCUMENT NO. \_\_\_\_\_

EAST QUARTER CORNER SECTION 26, T41, R23

**STATEMENT OF EVIDENCE**

ALL OF THE ORIGINAL BEARING TREES ARE NOW GONE.

THERE IS NO RE-SURVEY DATA ON FILE FOR THIS CORNER.

IN AUGUST OF 1988, M.B. RUDE RAN A SURVEY FROM THE NORTHEAST CORNER OF SECTION 23 TO THE SOUTHEAST CORNER OF SECTION 35 TO LOCATE THE EXISTING MONUMENTS, LINES OF OCCUPATION AND SEARCH AREAS.

THIS CORNER FALLS IN COUNTY HIGHWAY NO. 72 AT A FENCE LINE WEST.

ON AUGUST 21, 1988, M.B. RUDE MADE AN EXCAVATION WITH THE COUNTY BACKHOE AT THIS LOCATION. THE EXCAVATION WAS 15 FEET SQUARE DOWN TO THE NATURAL GROUND LEVEL. NO EVIDENCE WAS FOUND IN THE EXCAVATION.

THE CENTERLINE OF EXISTING HIGHWAY NO. 72 AND THE FENCE LINE WEST EXTENDED EAST WAS ACCEPTED AS THE BEST AVAILABLE EVIDENCE OF THE ORIGINAL CORNER LOCATION. THIS LOCATION IS 7.38 FEET NORTH OF A SPLIT OF THE EAST LINE OF SECTION 26.

IN APRIL 2007 E.G. RUD AND SONS FOUND THIS MONUMENT AND ESTABLISHED KANABEC COUNTY COORDINATES ON THIS POSITION.