

CERTIFICATE OF LOCATION OF GOVERNMENT CORNER

SOUTHEAST Corner of Section 35, Township 41, Range 23, 4TH P.M.

STATE OF MINNESOTA, County of KANABEC

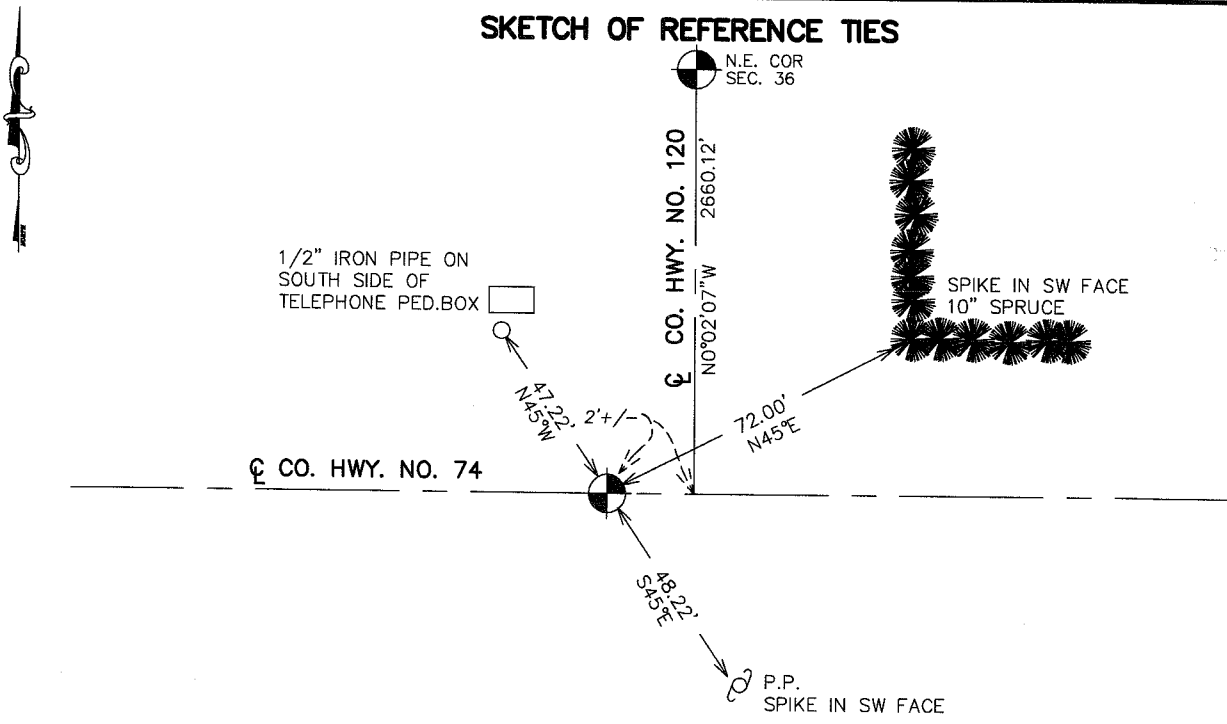
At the corner location shown on the sketch:
IN MARCH 2005 FOUND THIS MONUMENT
AND ESTABLISHED G.P.S. COORDINATES ON ITS LOCATION.

Kanabec County U.S. Survey Feet Coordinates
NAD 1983, HARN 1996 Adjustment
Obtained by RTK GPS Observation

Northing= 191678.50
Easting= 423189.75

Note: NAD 1983, HARN 1996 Adjustment
coordinates are NOT compatible with
NAD 1983 coordinates
Note: 1 Meter=3937/1200 U.S. Survey Feet

SKETCH OF REFERENCE TIES



Statement of evidence relative to this corner location is on back of page.

I hereby certify that this document and the data contained herein was prepared by me or under my direct supervision.

Ernest J. Reed Signature 11-18-2005 Date

Registration No. Minn No. 9808

Land Surveyor, [] Professional Engineer
[] County Surveyor, [] County Engineer

OFFICE OF THE COUNTY RECORDER

County of _____

I hereby certify that this document was filed in the County Recorder's office at _____ M. on the _____ day of _____ A.D., 20____

County Recorder _____

BY _____ Deputy

DOCUMENT NO. _____

STATEMENT OF EVIDENCE

ALL OF THE ORIGINAL BEARING TREES ARE NOW GONE.

JOHN BUCKLEY, A SURVEYOR, SET A 1/2" BY 18" IRON ROD BELOW A 6" BY 10" BY 17" MARKED SANDSTONE IN 1919.

THE FORMER COUNTY ENGINEER, FRANK TURNACLIFF, FOUND A STONE AND IRON PINE AND FILED A CORNER CERTIFICATE IN 1937.

ON AUGUST 20, 1988, M.B. RUDE MADE AN EXCAVATION WITH THE COUNTY BACKHOE FOR THIS CORNER AT THE INTERSECTION OF COUNTY HIGHWAY NO. 72 AND 74 AND FOUND THE SANDSTONE MONUMENT MARKED WITH THE "+" AND REPLACED IT WITH A 7/8" BY 24" CAPPED REBAR.

IN MARCH 2005 E.G. RUD AND SONS FOUND THIS MONUMENT AND ESTABLISHED KANABEC COUNTY COORDINATES ON THIS POSITION USING G.P.S. EQUIPMENT.