

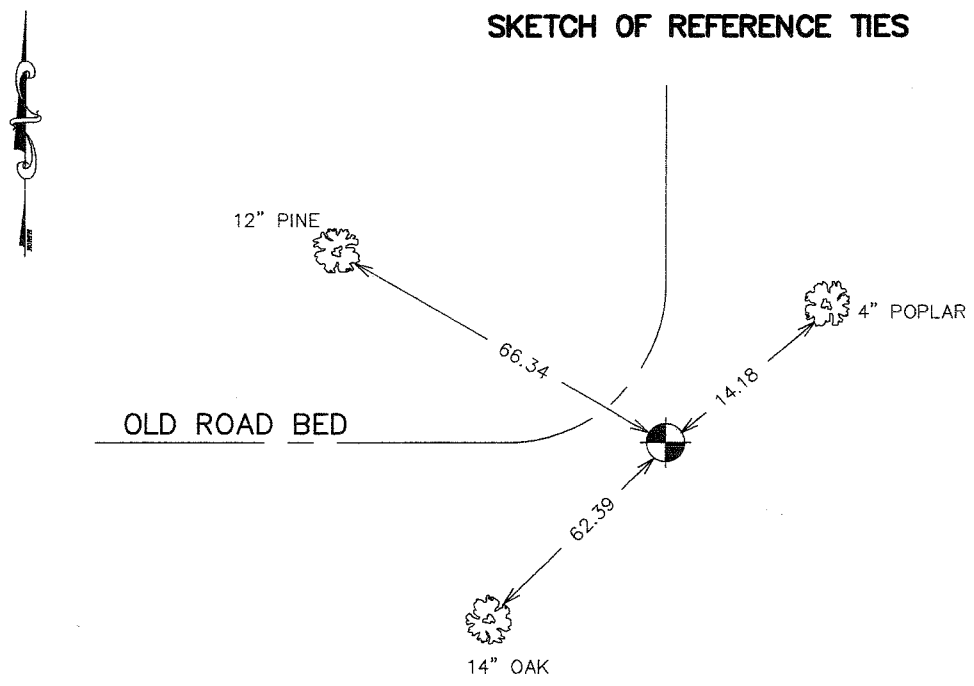
CERTIFICATE OF LOCATION OF GOVERNMENT CORNER

SOUTHEAST Corner of Section 34, Township 41, Range 23, 4TH P.M.
STATE OF MINNESOTA, County of KANABEC

At the corner location shown on the sketch:
FOUND THIS CORNER
AND ESTABLISHED G.P.S. COORDINATES ON ITS LOCATION

Kanabec County U.S. Survey Feet Coordinates
NAD 1983, HARN 1996 Adjustment
Obtained by RTK GPS Observation
Northing= 191724.57
Easting= 417906.93
Note: NAD 1983, HARN 1996 Adjustment
coordinates are NOT compatible with
NAD 1983 coordinates
Note: 1 Meter=3937/1200 U.S. Survey Feet

SKETCH OF REFERENCE TIES



TIES ARE TO A SPK. IN
BLAZE IN NEAR FACE

Statement of evidence relative to this corner location is on back of page.

I hereby certify that this document and the data contained herein was prepared by me or under my direct supervision.

Ernest Blud 5-1-2007
Signature Date

Registration No. Minn No 9808

- Land Surveyor, Professional Engineer
- County Surveyor, County Engineer

OFFICE OF THE COUNTY RECORDER

County of _____

I hereby certify that this document was filed in the County Recorder's office at _____ M. on the _____ day of _____ A.D., 20____

County Recorder _____
BY _____ Deputy

DOCUMENT NO. _____

SOUTHEAST CORNER SECTION 34, T41, R23

STATEMENT OF EVIDENCE

IN 1974 M.B. RUDE FOUND HALF OF OLD CAR REAR END HOUSING PER CERTIFICATE NO. 156.

THIS WAS THEN USED TO RUN THE ALIGNMENT OF COUNTY ROAD NO. 11 FROM THIS CORNER TO THE NORTHEAST CORNER OF SECTION 22. COUNTY ROAD NO. 11 WAS REBUILT AND ALL CORNER WERE DESTROYED.

IN APRIL 2007 E.G. RUD AND SONS REESTABLISHED THE SECTION CORNERS AS SET BY M.B. RUDE IN 1974. KANABEC COUNTY COORDINATES WERE ESTABLISHED ON THIS CORNER AT THAT TIME AND NEW TIES TAKEN.