

# CERTIFICATE OF LOCATION OF GOVERNMENT CORNER

SOUTHEAST Corner of Section 33, Township 41, Range 23, 4TH P.M.

STATE OF MINNESOTA, County of KANABEC

At the corner location shown on the sketch:  
FOUND AXLE AND DIFFERENTIAL HOUSING DRIVEN VERTICALLY INTO SWAMP NEXT TO OLD FENCE CORNER

Kanabec County U.S. Survey Feet Coordinates  
NAD 1983, HARN 1996 Adjustment  
Obtained by RTK GPS Observation

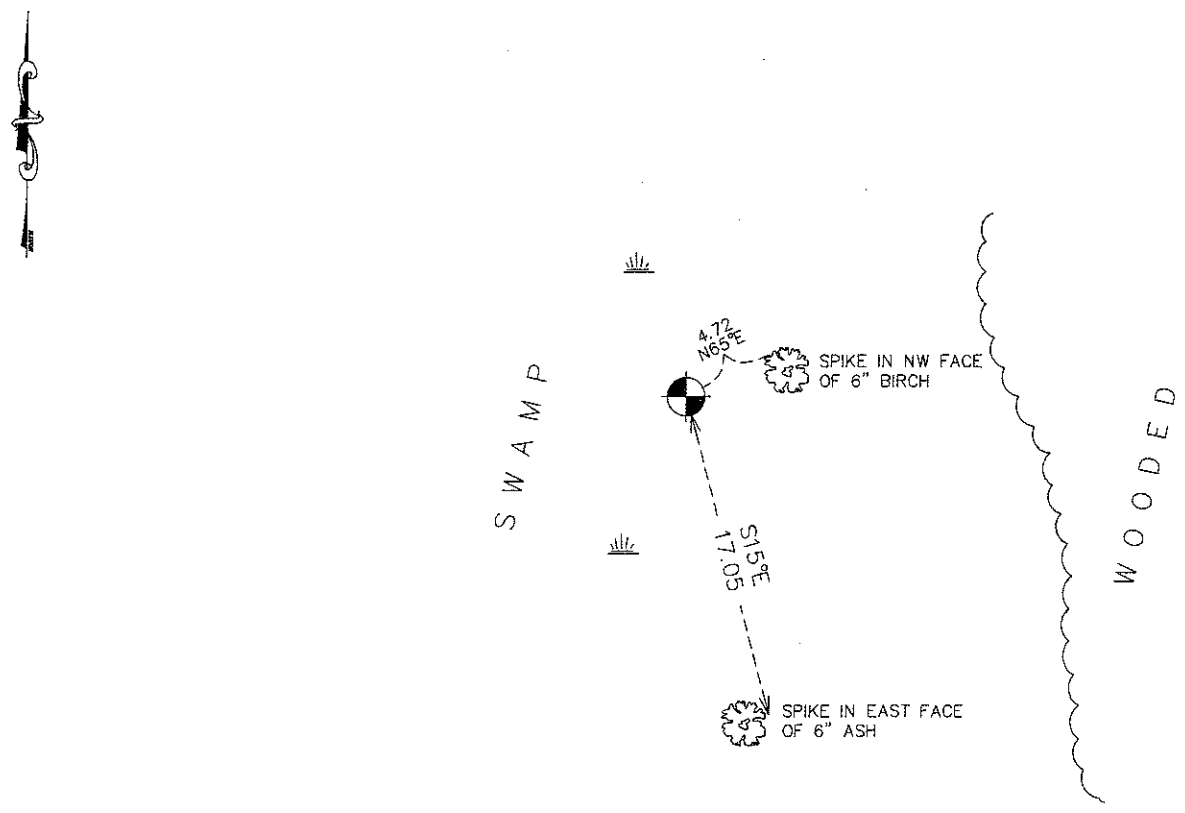
Northing= 191801.15

Easting= 412625.43

Note: NAD 1983, HARN 1996 Adjustment coordinates are NOT compatible with NAD 1983 coordinates

Note: 1 Meter=3937/1200 U.S. Survey Feet

## SKETCH OF REFERENCE TIES



Statement of evidence relative to this corner location is on back of page.

I hereby certify that this document and the data contained herein was prepared by me or under my direct supervision.

*Ernest J. Rud*  
Signature

7-18-2011  
Date

Registration No. 9808

- Land Surveyor,  Professional Engineer
- County Surveyor,  County Engineer

## OFFICE OF THE COUNTY RECORDER

County of \_\_\_\_\_

I hereby certify that this document was filed in the County Recorder's office at \_\_\_\_\_ M. on the \_\_\_\_\_ day of \_\_\_\_\_ A.D., 20\_\_\_\_

County Recorder \_\_\_\_\_  
BY \_\_\_\_\_ Deputy

DOCUMENT NO. \_\_\_\_\_

SE CORNER, SEC. 33, T41, R23

**STATEMENT OF EVIDENCE**

**THE ORIGINAL GOVERNMENT POST WAS SET BY A DEPUTY SURVEYOR ON OCT. 5, 1851 AND 2 BEARING TREES NOTED AS:**

**8" TAMARACK @ 215 LINKS BEARING S3°W**

**7" TAMARACK @ 37 LINKS BEARING N82°W**

**NO VISIBLE EVIDENCE REMAINS FOR THE POST OR BEARING TREES TODAY.**

**ON OCT. 4, 1974 M.B. RUDE FOUND AN AXLE HUB AT THE FENCE CORNER. THIS LOCATION FIT THE SURVEY MEASUREMENTS RECORDED IN 1929 AT THE REGISTRAR OF DEEDS OFFICE. TIES WERE TAKEN AND RECORDED ON CERTIFICATE OF LOCATION NO. 336**

**ON APR. 19, 2011 E.G. RUD AND SONS, INC. FOUND THIS AXLE HUB. NEW TIES WERE TAKEN AND KANABEC COUNTY COORDINATES WERE ESTABLISHED ON THIS POSITION.**