

# CERTIFICATE OF LOCATION OF GOVERNMENT CORNER

SOUTH QUARTER Corner of Section 33, Township 41, Range 23, 4TH P.M.

STATE OF MINNESOTA, County of KANABEC

At the corner location shown on the sketch:

FOUND A CAST ALUMINUM MONUMENT

Kanabec County U.S. Survey Feet Coordinates  
 NAD 1983, HARN 1996 Adjustment  
 Obtained by RTK GPS Observation

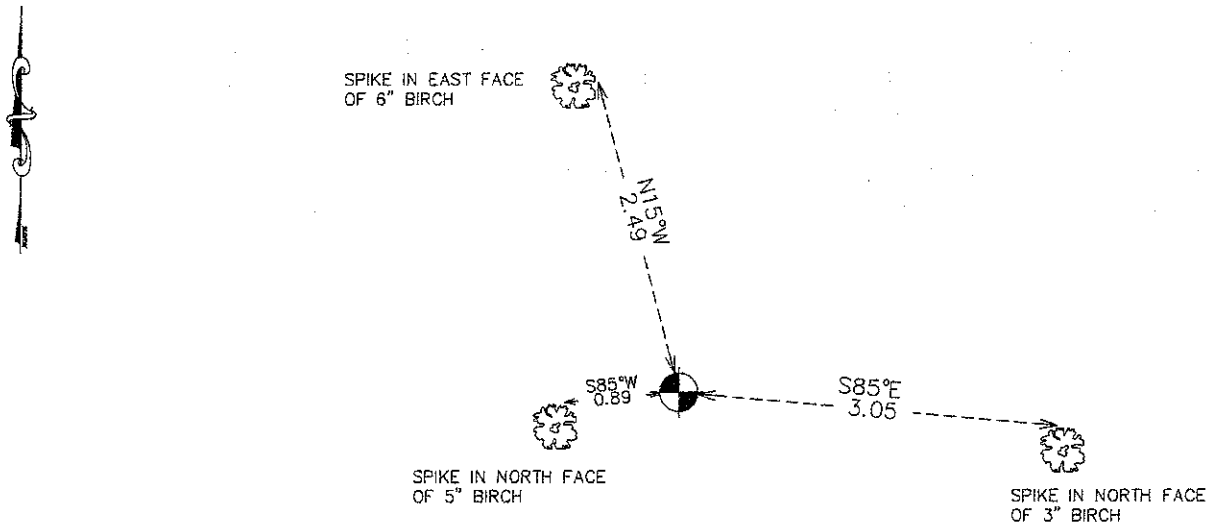
Northing= 191833.83

Easting= 409981.14

Note: NAD 1983, HARN 1996 Adjustment  
 coordinates are NOT compatible with  
 NAD 1983 coordinates

Note: 1 Meter=3937/1200 U.S. Survey Feet

### SKETCH OF REFERENCE TIES



Statement of evidence relative to this corner location is on back of page.

I hereby certify that this document and the data contained herein was prepared by me or under my direct supervision.

*Ernest H. Paul*  
 Signature

7-19-2011  
 Date

Registration No. 9808

- Land Surveyor,     Professional Engineer  
 County Surveyor,     County Engineer

### OFFICE OF THE COUNTY RECORDER

County of \_\_\_\_\_

I hereby certify that this document was filed in the County Recorder's office at \_\_\_\_\_ M. on the

\_\_\_\_\_ day of \_\_\_\_\_ A.D., 20\_\_\_\_

County Recorder \_\_\_\_\_

BY \_\_\_\_\_ Deputy

**DOCUMENT NO.** \_\_\_\_\_

S1/4 CORNER, SEC. 33, T41, R23

**STATEMENT OF EVIDENCE**

**THE ORIGINAL GOVERNMENT POST WAS SET BY A DEPUTY SURVEYOR IN RUNNING THE TOWNSHIP BOUNDARIES ON OCT. 5, 1851 AND 2 BEARING TREES NOTED AS:**

**24" WHITE PINE @ 26 LINKS BEARING N67°E**

**10" POPLAR @ 21 LINKS BEARING N16°W**

**NO VISIBLE EVIDENCE REMAINS FOR THE POST OR BEARING TREES TODAY.**

**ON SEPT. 17, 1975 M.B. RUDE SET A KANABEC COUNTY MONUMENT ON LINE AND AT THE MIDPOINT BETWEEN THE SE AND SW CORNERS OF SEC. 33. TIES WERE TAKEN AND RECORDED ON CERTIFICATE OF LOCATION NO. 448**

**ON APR. 19, 2011 E.G. RUD AND SONS, INC. FOUND THIS CORNER IN GOOD SHAPE. NEW TIES WERE TAKEN AND KANABEC COUNTY COORDINATES WERE ESTABLISHED IN THIS POSITION.**