

# CERTIFICATE OF LOCATION OF GOVERNMENT CORNER

SOUTHEAST Corner of Section 32, Township 41, Range 23, 4TH P.M.

STATE OF MINNESOTA, County of KANABEC

At the corner location shown on the sketch:  
SET A NO. 7 REBAR WITH ALUMINUM CAP

Kanabec County U.S. Survey Feet Coordinates  
NAD 1983, HARN 1996 Adjustment  
Obtained by RTK GPS Observation

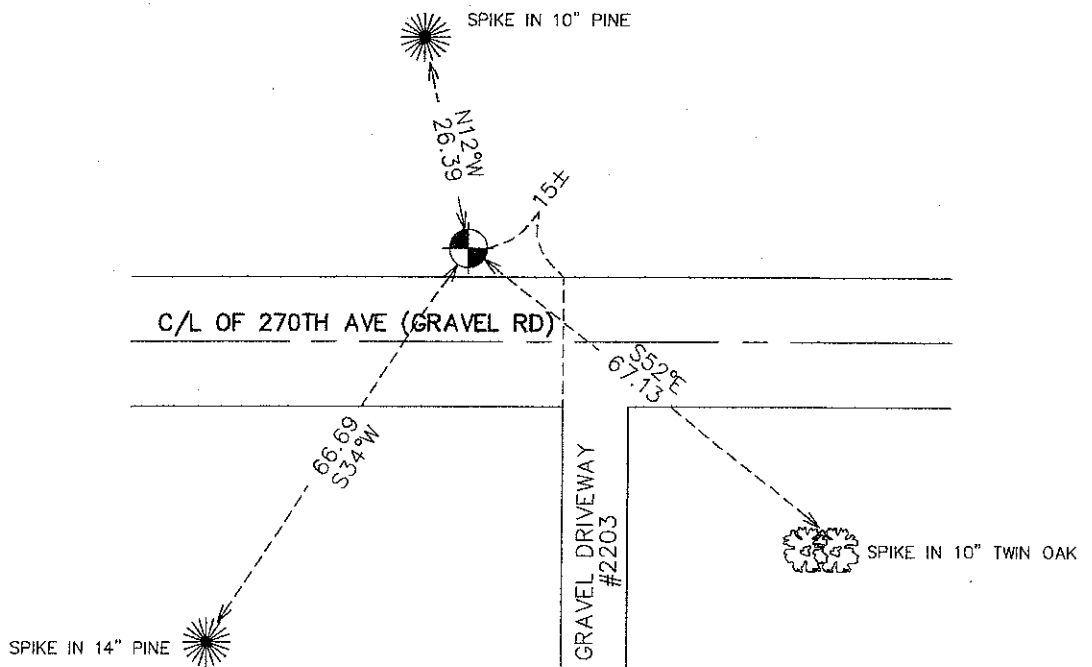
Northing= 191866.41

Easting= 407336.80

Note: NAD 1983, HARN 1996 Adjustment  
coordinates are NOT compatible with  
NAD 1983 coordinates

Note: 1 Meter=3937/1200 U.S. Survey Feet

## SKETCH OF REFERENCE TIES



Statement of evidence relative to this corner location is on back of page.

I hereby certify that this document and the data contained herein was prepared by me or under my direct supervision.

Ernest Rud 12-21-2011  
Signature Date

Registration No. 9808

- Land Surveyor,  Professional Engineer  
 County Surveyor,  County Engineer

## OFFICE OF THE COUNTY RECORDER

County of \_\_\_\_\_

I hereby certify that this document was filed in the County Recorder's office at \_\_\_\_\_ M. on the

\_\_\_\_\_ day of \_\_\_\_\_ A.D., 20\_\_\_\_

County Recorder \_\_\_\_\_

BY \_\_\_\_\_ Deputy

DOCUMENT NO. \_\_\_\_\_

SE CORNER, SEC. 32, T41, R23

**STATEMENT OF EVIDENCE**

**THE ORIGINAL CORNER WAS SET BY DEPUTY SURVEYOR JOHN M. GLEY ON OCT. 5, 1851 AND 3 BEARING TREES AS NOTED:**

**12" WHITE PINE @ 31 LINKS BEARING N70°E**

**13" WHITE PINE @ 25 LINKS BEARING N29°E**

**18" WHITE PINE @ 21 LINKS BEARING N22°W**

**NO VISIBLE EVIDENCE REMAINS FOR THE QUARTER CORNER OR BEARING TREES.**

**ON FEB. 26, 1972 FRANK KVIDERA (RLS #6469) PLACED A 1/2" IRON PIPE AT THIS LOCATION IN A SURVEY ALONG THE CORRECTION LINE.**

**IN 1975 M.B. RUDE FILED A BREAKDOWN OF SECTION 32 IN THE SURVEY RECORDS OF KANABEC COUNTY. IT DID NOT NOTE WHAT WAS IN PLACE BUT IN SETTING THE S1/4 OF SECTION 33, M.B. RUDE PLACED THE S1/4 OF 33 ON LINE AND SPLIT BETWEEN THE SE AND SW CORNERS OF SEC. 33**

**ON APRIL 19, 2011, E.G. RUD AND SONS, INC. TRIED TO LOCATE THIS MONUMENT BUT COULD NOT FIND IT. THEREFORE A MONUMENT WAS RESET BY USING THE MATHEMATICAL INFORMATION NOTED ABOVE.**

**TIES WERE TAKEN AND KANABEC COUNTY COORDINATES ESTABLISHED ON THIS POSITION.**