

CERTIFICATE OF LOCATION OF GOVERNMENT CORNER

SOUTH QUARTER Corner of Section 32, Township 41, Range 23, 4TH P.M.

STATE OF MINNESOTA, County of KANABEC

At the corner location shown on the sketch:

FOUND CAST ALUMINUM MONUMENT

Kanabec County U.S. Survey Feet Coordinates
NAD 1983, HARN 1996 Adjustment
Obtained by RTK GPS Observation

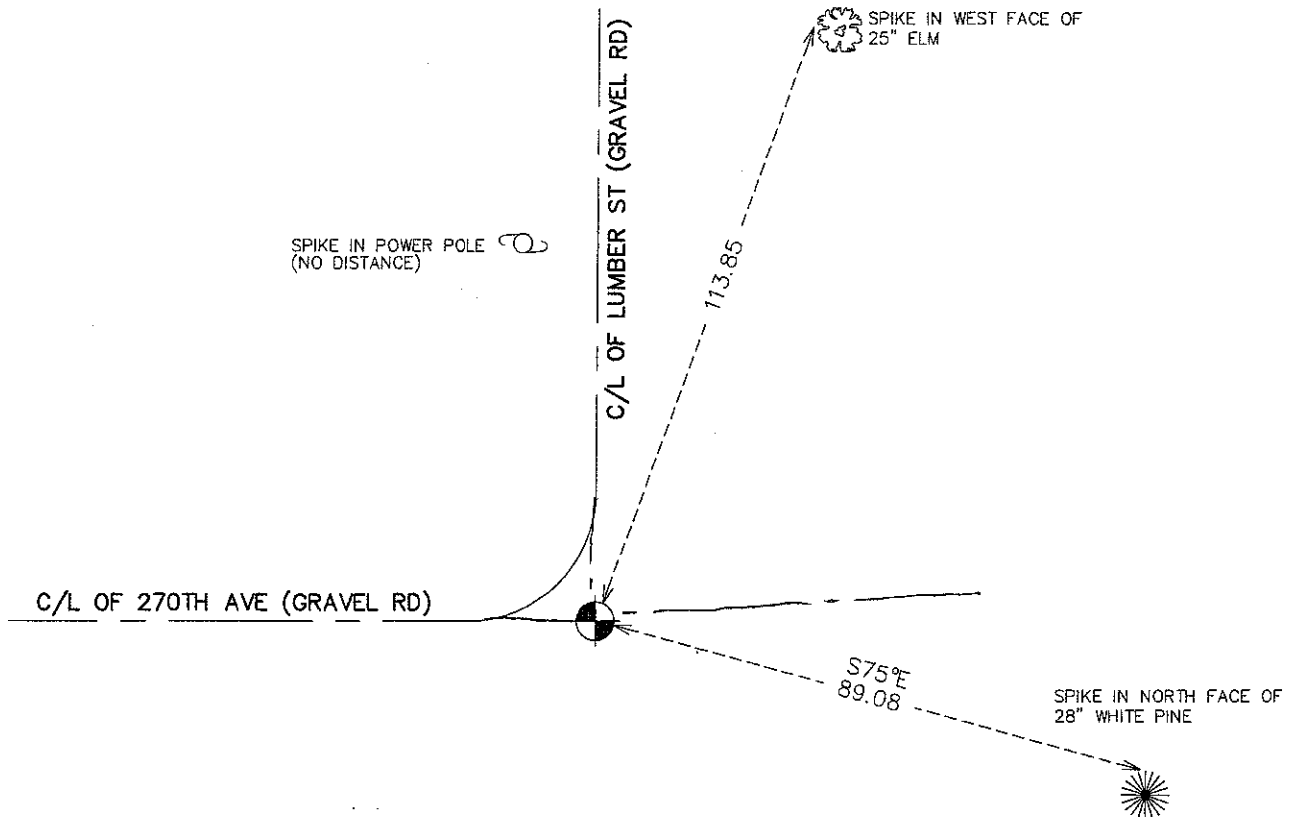
Northing= 191914.35

Easting= 404699.85

Note: NAD 1983, HARN 1996 Adjustment
coordinates are NOT compatible with
NAD 1983 coordinates

Note: 1 Meter=3937/1200 U.S. Survey Feet

SKETCH OF REFERENCE TIES



Statement of evidence relative to this corner location is on back of page.

I hereby certify that this document and the data contained herein was prepared by me or under my direct supervision.

Ernest Rud
Signature

11-27-10
Date

Registration No. 9808

Land Surveyor, Professional Engineer

County Surveyor, County Engineer

OFFICE OF THE COUNTY RECORDER

County of _____

I hereby certify that this document was filed in the County Recorder's office at _____ M. on the

_____ day of _____ A.D., 20____

County Recorder _____

BY _____ Deputy

DOCUMENT NO. _____

S1/4 CORNER, SEC. 32, T41, R23

STATEMENT OF EVIDENCE

THE ORIGINAL CORNER WAS SET BY DEPUTY SURVEYOR JOHN M. GLEY ON OCT. 6, 1851 AND 2 BEARING TREES AS NOTED:

8" BLACK ASH @ 15 LINKS BEARING N58°E

12" POPLAR @ 32 LINKS BEARING N28.5°W

ALL VISIBLE EVIDENCE FOR THE QUARTER CORNER OR BEARING TREES NO LONGER REMAINS.

ON APRIL 17, 1961 GERALD J. SULLIVAN FOUND AN IRON PIPE AT THE INTERSECTION OF THE CENTERLINE OF TWO ROADS AND TOOK 3 TIES AND FILED CERTIFICATE NO. 198.

ON SEPT. 17, 1970 GERALD SULLIVAN REPLACED THIS IRON PIPE WITH A CAST IRON MONUMENT INSCRIBED "PROPERTY CORNER". HE ESTABLISHED 4 TIES AND FILED CERTIFICATE NO. 254.

ON CERTIFICATE NO. 462, DATED FEB. 28, 1972, FRANK KVIDERA FOUND AN IRON PIPE AND TOOK 5 TIES OF WHICH 3 WERE ABOUT THE SAME AS GERALD SULLIVAN. IT WOULD APPEAR THAT THE WORK WAS DONE WELL BEFORE THE CERTIFICATE WAS FILED.

IN 1982, E.G. RUD AND SONS, INC. FOUND A CAST IRON MONUMENT AT THIS LOCATION AND VERIFIED THE FIELD TIES AND MEASUREMENTS BY M.B. RUDE.

IN 2003, E.G. RUD AND SONS, INC. LOCATED THE MONUMENT AGAIN AND ESTABLISHED KANABEC COUNTY COORDINATES ON THIS POSITION.