

CERTIFICATE OF LOCATION OF GOVERNMENT CORNER

~~NORTHWEST~~ Corner of Section 30, Township 41, Range 23, 4TH P.M.
SOUTHWEST Corner of Section 31, Township 41, Range 23, 4TH P.M.

STATE OF MINNESOTA, County of KANABEC

At the corner location shown on the sketch:

FOUND CAST ALUMINUM MONUMENT

Kanabec County U.S. Survey Feet Coordinates
NAD 1983, HARN 1996 Adjustment
Obtained by RTK GPS Observation

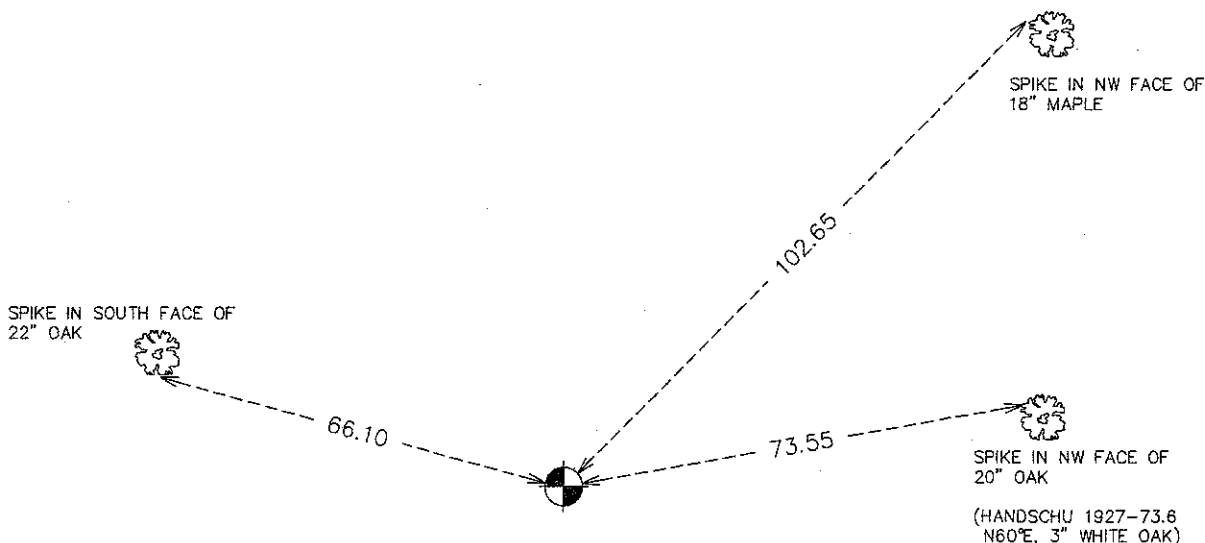
Northing= 192035.59

Easting= 396497.10

Note: NAD 1983, HARN 1996 Adjustment
coordinates are NOT compatible with
NAD 1983 coordinates

Note: 1 Meter=3937/1200 U.S. Survey Feet

SKETCH OF REFERENCE TIES



Statement of evidence relative to this corner location is on back of page.

I hereby certify that this document and the data contained herein was prepared by me or under my direct supervision.

Ernest J. Reed
Signature

11-27-10
Date

Registration No. 9808

Land Surveyor, Professional Engineer

County Surveyor, County Engineer

OFFICE OF THE COUNTY RECORDER

County of _____

I hereby certify that this document was filed in the County Recorder's office at _____ M. on the

_____ day of _____ A.D., 20____

County Recorder _____

BY _____ Deputy

DOCUMENT NO. _____

SE CORNER, SEC. 36, T41, R24
SW CORNER, SEC. 31, T41, R23

STATEMENT OF EVIDENCE

THIS TOWNSHIP CORNER WAS ORIGINALLY SET BY DEPUTY SURVEYOR ON OCT. 6, 1851 AND 3 BEARING TREES NOTED AS:

14" SUGAR MAPLE @ 36 LINKS BEARING N50°E

10" SUGAR MAPLE @ 40 LINKS BEARING N03°W

12" SUGAR MAPLE @ 26 LINKS BEARING N49°W

ALL OF THE ORIGINAL BEARING TREES ARE NOW GONE.

CHARLES HANDSCHU, A LAND SURVEYOR, MADE A SURVEY OF KNIFE LAKE IN 1927 AND HIS MAP CALLS FOR AN IRON MONUMENT AND 2 TIES:

15" RED OAK @ 57.8' BEARING N40°E

3" WHITE OAK @ 73.6' BEARING N60°E

THE COUNTY SURVEYORS C.E.T.A. CREW FOUND HANDSCHU'S CORNER IN 1975 AND REPLACED IT WITH A CAST ALUMINUM MONUMENT.

IN JUNE 1979, M.B. RUDE FOUND THE CAST ALUMINUM MONUMENT AND ONE OF HANDSCHU'S TIES AND ACCEPTED IT THIS CORNER AS THE BEST EVIDENCE OF THE ORIGINAL CORNER LOCATION.

IN MAY 2005, E.G. RUD AND SONS, INC. FOUND THE CAST ALUMINUM MONUMENT AND KANABEC COUNTY COORDINATES WERE ESTABLISHED ON THIS POSITION.

01-13-11

2728