

# CERTIFICATE OF LOCATION OF GOVERNMENT CORNER

NORTHEAST Corner of Section 36, Township 41, Range 24, 4TH P.M.

STATE OF MINNESOTA, County of KANABEC

CAST IRON MONUMENT PER CERT. NO. 231

Kanabec County U.S. Survey Feet Coordinates  
 NAD 1983, HARN 1996 Adjustment  
 Obtained by RTK GPS Observation

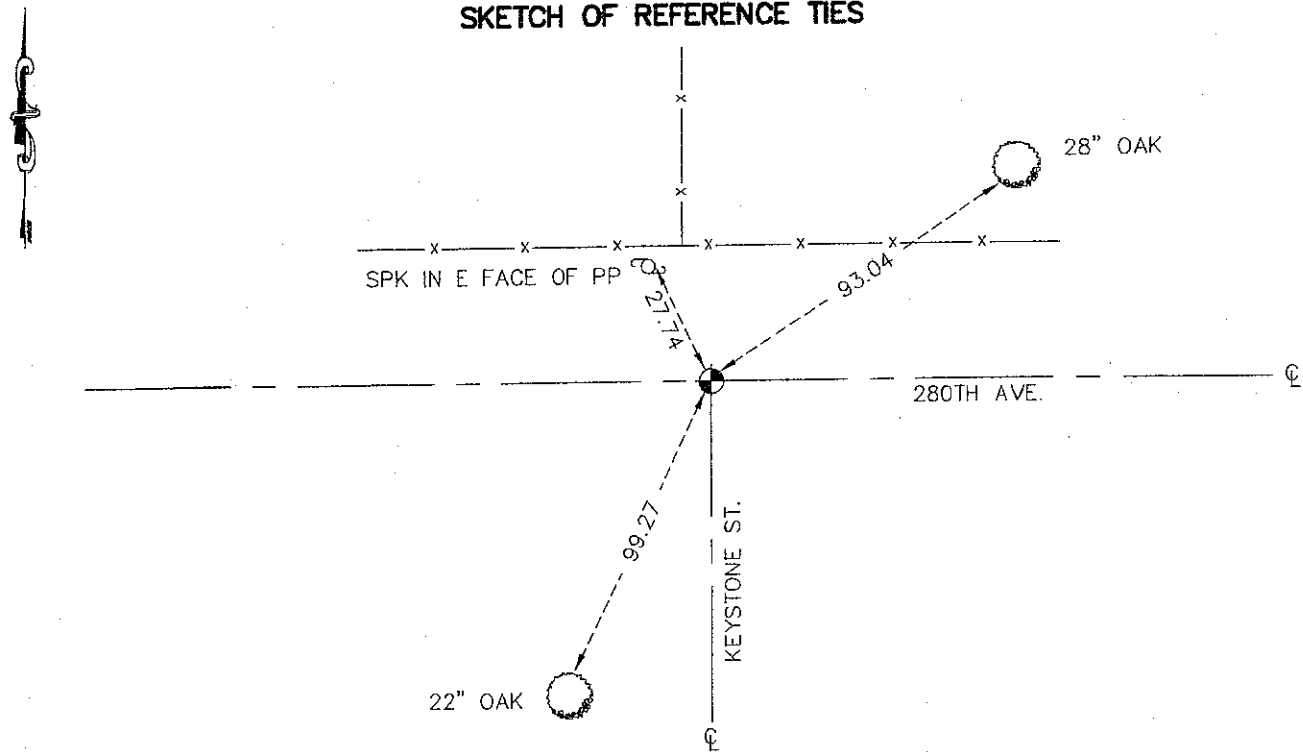
Northing= 197286.97

Easting= 396601.90

Note: NAD 1983, HARN 1996 Adjustment  
 coordinates are NOT compatible with  
 NAD 1983 coordinates

Note: 1 Meter=3937/1200 U.S. Survey Feet

## SKETCH OF REFERENCE TIES



TIES ARE TO SPK IN BLAZE IN NEAR FACE

Statement of evidence relative to this corner location is on back of page.

I hereby certify that this document and the data contained herein was prepared by me or under my direct supervision.

Ernest Blud  
 Signature

3-17-2009  
 Date

Registration No. 9808

- Land Surveyor,     Professional Engineer  
 County Surveyor,     County Engineer

## OFFICE OF THE COUNTY RECORDER

County of \_\_\_\_\_

I hereby certify that this document was filed in the County Recorder's office at \_\_\_\_\_ M. on the

\_\_\_\_\_ day of \_\_\_\_\_ A.D., 20\_\_

County Recorder \_\_\_\_\_

BY \_\_\_\_\_ Deputy

DOCUMENT NO. \_\_\_\_\_

NE CORNER SECTION 36, TOWNSHIP 41, RANGE 24

**STATEMENT OF EVIDENCE**

THE ORIGINAL CORNER WAS SET ON OCT. 14, 1849 BY DEPUTY SURVEYOR ISAAC BANKER AND 4 ASPEN TREES WERE NOTED AS BEARING TREES. NO VISIBLE EVIDENCE REMAINS TODAY FOR THE ORIGINAL CORNER OR BEARING TREES.

ON JUNE 16, 1970, NORM C. HOIUM SET A CAST IRON MONUMENT AT THE INTERSECTION OF AN EAST - WEST GRAVEL ROAD WITH A TOWN ROAD TO THE SOUTH AND A FENCE LINE TO THE NORTH. THIS REPLACED A 1/2" X 30" IRON PIPE SET IN 1966 AS STATED ON CERTIFICATE OF LOCATION FILED ON PAGE 231 OF CORNER LOCATION. THIS CORNER WAS VERIFIED AND RETIED ON DEC. 8, 1988 BY M.B. RUDE.

IN MARCH 2009 E.G. RUD AND SONS FOUND THIS MONUMENT AND ESTABLISHED KANABEC COUNTY COORDINATES ON THIS POSITION USING G.P.S. EQUIPMENT.