

CERTIFICATE OF LOCATION OF GOVERNMENT CORNER

W 1/4 *Sec 30* *41* *23*
 EAST QUARTER Corner of Section 25, Township 41, Range 24, 4TH P.M.

STATE OF MINNESOTA, County of KANABEC

At the corner location shown on the sketch:
 4" X 17" CAST IRON MONUMENT

Kanabec County U.S. Survey Feet Coordinates
 NAD 1983, HARN 1996 Adjustment
 Obtained by RTK GPS Observation

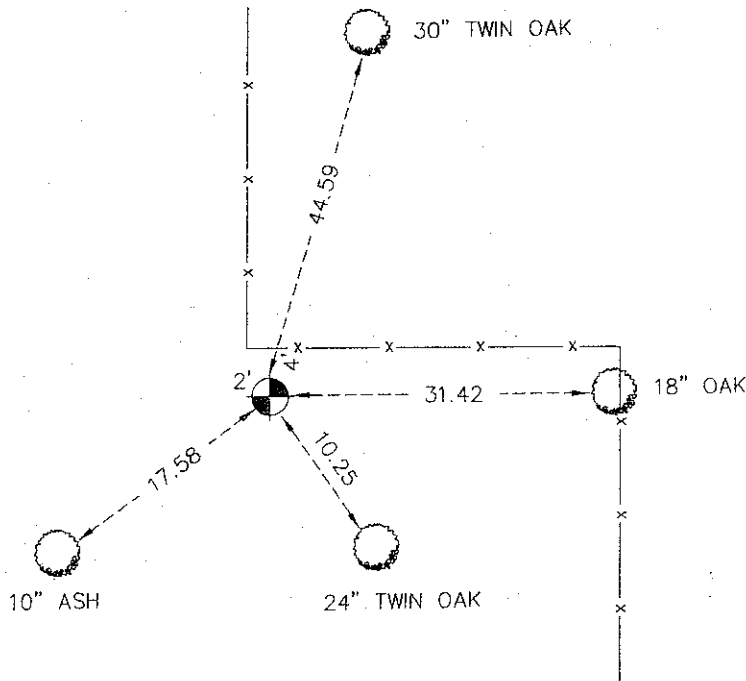
Northing= 199933.34

Easting= 396620.99

Note: NAD 1983, HARN 1996 Adjustment
 coordinates are NOT compatible with
 NAD 1983 coordinates

Note: 1 Meter=3937/1200 U.S. Survey Feet

SKETCH OF REFERENCE TIES



TIES ARE TO SPK IN BLAZE IN NEAR FACE

Statement of evidence relative to this corner location is on back of page.

I hereby certify that this document and the data contained herein was prepared by me or under my direct supervision.

Eneet Rud 3-17-2009
 Signature Date

Registration No. 9808

Land Surveyor, [] Professional Engineer
 [] County Surveyor, [] County Engineer

OFFICE OF THE COUNTY RECORDER

County of _____

I hereby certify that this document was filed in the County Recorder's office at _____ M. on the _____ day of _____ A.D., 20____

County Recorder _____

BY _____ Deputy

BY _____ Deputy

DOCUMENT NO. _____

E 1/4 CORNER SECTION 25, T41, R24

STATEMENT OF EVIDENCE

ALL OF THE ORIGINAL BEARING TREES ARE NOW GONE.

THERE IS NO RESURVEY DATA ON FILE FOR THIS CORNER.

ON JUNE 8, 1983, M.B. RUDE RAN A SURVEY AROUND SECTION 25 AND LOCATED THE EXISTING LINES OF OCCUPATION.

THERE IS AN EXISTING OLD CROOKED EAST-WEST FENCE LINE AT THIS CORNER AND FENCE LINE NORTH AND SOUTH 35 FEET EAST OF THE FENCE LINE NORTH.

A SEARCH WAS MADE AROUND BOTH FENCE INTERSECTIONS, BUT NO EVIDENCE WAS FOUND.

M.B. RUDE SET THIS CORNER BY SINGLE PROPORTIONAL MEASUREMENT BETWEEN THE NORTHEAST AND SOUTHEAST CORNERS OF SECTION 25. THIS LOCATION IS 4 FEET, PLUS OR MINUS, SOUTH OF THE EAST-WEST FENCE LINE AND 1 FOOT EAST OF THE FENCE LINE NORTH EXTENDED SOUTH AND 33 FEET WEST OF THE FENCE LINE SOUTH.

IN MARCH 2009 E.G. RUD AND SONS FOUND THIS MONUMENT AND ESTABLISHED KANABEC COUNTY COORDINATES ON THIS LOCATION.