

CERTIFICATE OF LOCATION OF GOVERNMENT CORNER

SW Corner of Section 19, Township 41, Range 24, 4TH P.M.

STATE OF MINNESOTA, County of KANABEC

2 3/4" X 19" CAST IRON MONUMENT

Kanabec County U.S. Survey Feet Coordinates
 NAD 1983, HARN 1996 Adjustment
 Obtained by RTK GPS Observation

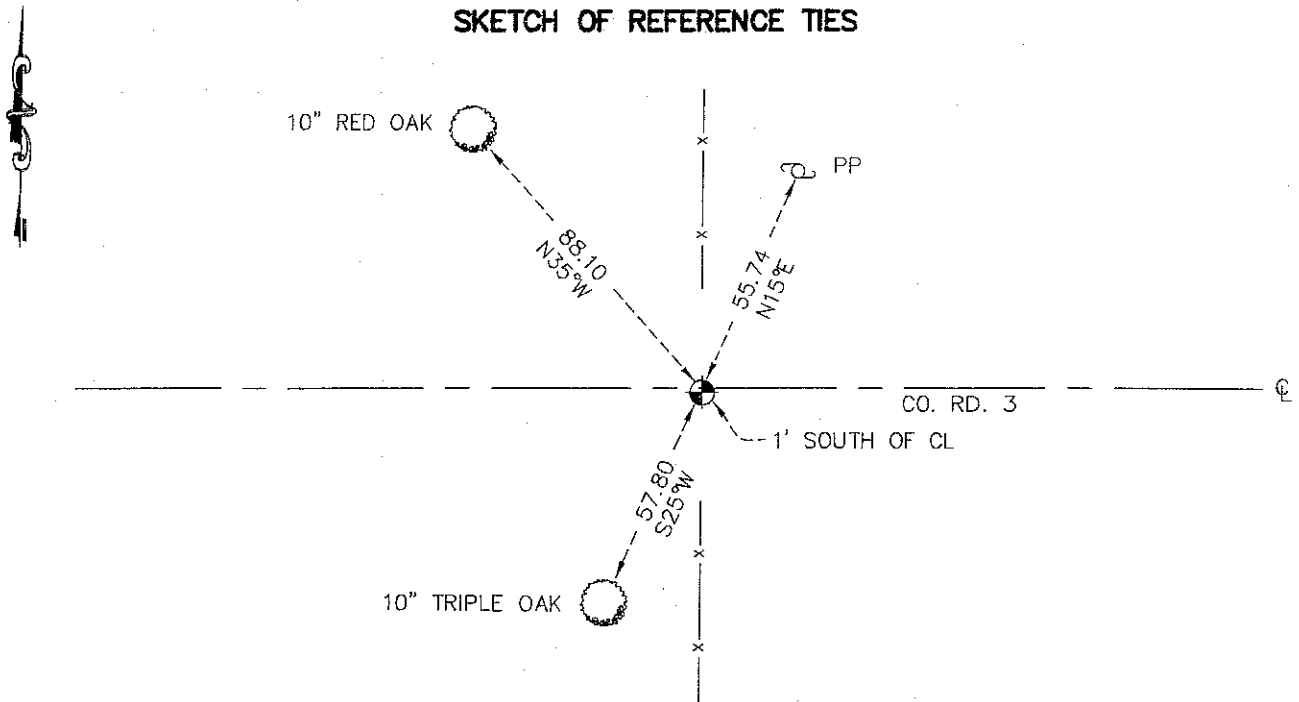
Northing= 202579.71

Easting= 396640.28

Note: NAD 1983, HARN 1996 Adjustment
 coordinates are NOT compatible with
 NAD 1983 coordinates

Note: 1 Meter=3937/1200 U.S. Survey Feet

SKETCH OF REFERENCE TIES



TIES ARE TO SPK IN BLAZE IN NEAR FACE

Statement of evidence relative to this corner location is on back of page.

I hereby certify that this document and the data contained herein was prepared by me or under my direct supervision.

Ernest J. Reed
 Signature

3-17-2009
 Date

Registration No. 9808

- Land Surveyor, Professional Engineer
 County Surveyor, County Engineer

OFFICE OF THE COUNTY RECORDER

County of _____

I hereby certify that this document was filed in the County Recorder's office at _____ M. on the _____ day of _____ A.D., 20____

County Recorder _____

BY _____ Deputy

DOCUMENT NO. _____

SE CORNER SECTION 24, TOWNSHIP 41, RANGE 24

STATEMENT OF EVIDENCE

ALL OF THE ORIGINAL BEARING TREES ARE NOW GONE.

THERE IS A ROAD ORDER ON FILE FROM 1904, FOR A 4 ROD ROAD LAID OUT FROM THE SOUTHWEST CORNER OF SECTION 23 TO THE SOUTHEAST CORNER OF SECTION 24. THIS ROAD ORDER STATES THAT NO SURVEYOR WAS EMPLOYED IN THE LAYING OUT OF THE ROAD AS THE GOVERNMENT SURVEY WAS PLAINLY VISIBLE.

IN FEBRUARY 1979, M.B. RUDE RAN A SURVEY ALONG THE SOUTH LINE OF SECTIONS 22, 23 AND 24 AND LOCATED THE LINES OF OCCUPATION. THIS CORNER FALLS ON AN EAST-WEST COUNTY HIGHWAY AND FENCE LINE SOUTH AND NORTH.

THE COUNTY HIGHWAY PLANS SHOW THIS ROAD WAS REBUILT IN THE ORIGINAL LOCATION.

IN JULY 1980, M.B. RUDE MADE AN EXCAVATION WITH A BACKHOE AT THIS LOCATION. THE EXCAVATION WAS 15 FEET SQUARE, 4 FEET DEEP. NO EVIDENCE WAS FOUND IN THE EXCAVATION.

THE CENTER LINE OF THE EAST-WEST COUNTY HIGHWAY AND FENCE LINE NORTH AND SOUTH WAS ACCEPTED AS THE BEST AVAILABLE EVIDENCE OF THE ORIGINAL CORNER LOCATION AS IT FITS THE ROAD ORDER LOCATION FROM 1904 AND THE ACCEPTED LINES OF OCCUPATION.

IN MARCH 2009, E.G. RUD AND SONS FOUND THIS MONUMENT AND ESTABLISHED KANABEC COUNTY COORDINATES USING SURVEY QUALITY G.P.S. EQUIPMENT.