

# CERTIFICATE OF LOCATION OF GOVERNMENT CORNER

~~NORTHWEST~~ NORTHWEST  
~~NORTHEAST~~ ~~NORTHEAST~~ Corner of Section 18, Township 41, Range 23, 4TH P.M.

STATE OF MINNESOTA, County of KANABEC

At the corner location shown on the sketch:  
SET A #7 REBAR WITH ALUMINUM CAP IN HAY FIELD.

Kanabec County U.S. Survey Feet Coordinates  
NAD 1983, HARN 1996 Adjustment  
Obtained by RTK GPS Observation

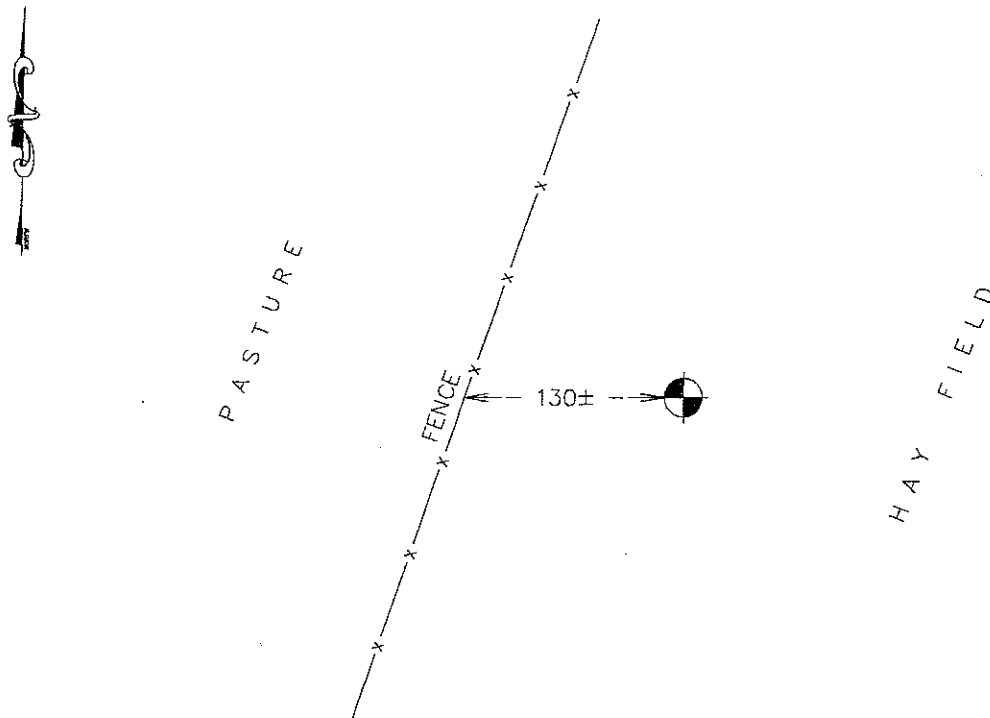
Northing= 213163.10

Easting= 396714.13

Note: NAD 1983, HARN 1996 Adjustment  
coordinates are NOT compatible with  
NAD 1983 coordinates

Note: 1 Meter=3937/1200 U.S. Survey Feet

## SKETCH OF REFERENCE TIES



Statement of evidence relative to this corner location is on back of page.

I hereby certify that this document and the data contained herein was prepared by me or under my direct supervision.

Ernest Rud  
Signature

12-22-11  
Date

Registration No. 9808

Land Surveyor,  Professional Engineer

County Surveyor,  County Engineer

## OFFICE OF THE COUNTY RECORDER

County of \_\_\_\_\_

I hereby certify that this document was filed in the County Recorder's office at \_\_\_\_\_ M. on the

\_\_\_\_\_ day of \_\_\_\_\_ A.D., 20\_\_

County Recorder \_\_\_\_\_

BY \_\_\_\_\_ Deputy

DOCUMENT NO. \_\_\_\_\_

NW CORNER, SEC. 18, T41, R23  
NE CORNER, SEC. 13, T41, R24

STATEMENT OF EVIDENCE

THE ORIGINAL CORNER WAS ON OCTOBER 14, 1849 BY U.S. DEPUTY SURVEYOR AND 4 BEARING TREES NOTED AS:

- 8" TAMARACK @ 23 LINKS BEARING S48°W
- 12" ASPEN @ 31 LINKS BEARING N70°W
- 9" TAMARACK @ 5 LINKS BEARING N20°E
- 8" BIRCH @ 11 LINKS BEARING S45°E

NO VISIBLE EVIDENCE COULD BE FOUND FOR THE ORIGINAL CORNER OR BEARING TREES.

IN BOOK A OF SURVEYS, PAGES 92-93, A SURVEY BY NELS SJODIN JR. IS RECORDED FOR THE COUNTY COMMISSIONER ALONG THE EAST LINE OF SECS. 12, 13, 24 AND 25. THERE WAS NO MENTION OF A GOVERNMENT POST AT THIS LOCATION OR A CORNER BEING SET. THERE ARE NO VISIBLE SIGNS OF A ROAD BEING BUILT ALONG THIS TOWNSHIP LINE.

THEREFORE, WE SET A #7 REBAR WITH AN ALUMINUM CAP USING LOST METHODS BETWEEN THE E1/4 CORNER OF SEC. 12 AND THE NE CORNER OF SEC. 24. NO TIES WERE AVAILABLE.