

# CERTIFICATE OF LOCATION OF GOVERNMENT CORNER

NORTH QUARTER Corner of Section 6, Township 41, Range 23, 4TH P.M.  
~~SOUTH QUARTER Corner of Section 31, Township 42, Range 23, 4TH P.M.~~

STATE OF MINNESOTA, County of KANABEC

At the corner location shown on the sketch:  
 FOUND 1/2" IRON PIPE

Kanabec County U.S. Survey Feet Coordinates  
 NAD 1983, HARN 1996 Adjustment  
 Obtained by RTK GPS Observation

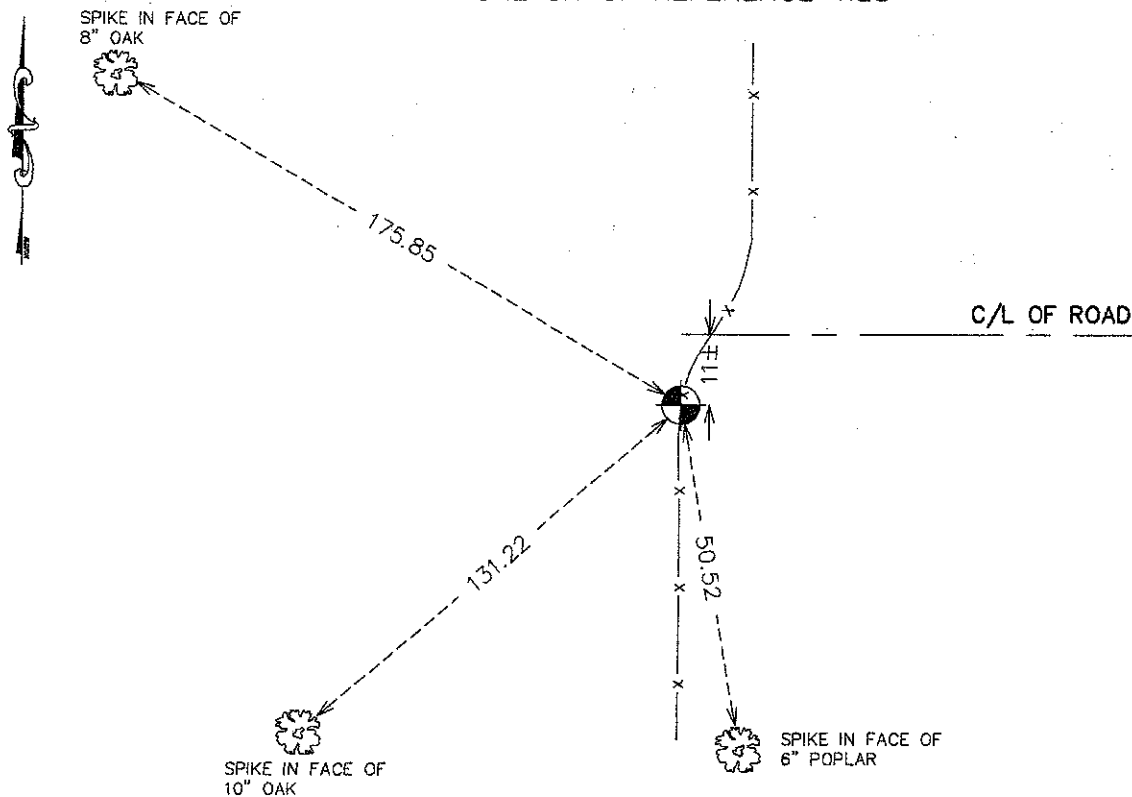
Northing= 225016.93

Easting= 399721.31

Note: NAD 1983, HARN 1996 Adjustment  
 coordinates are NOT compatible with  
 NAD 1983 coordinates

Note: 1 Meter=3937/1200 U.S. Survey Feet

### SKETCH OF REFERENCE TIES



Statement of evidence relative to this corner location is on back of page.

I hereby certify that this document and the data contained herein was prepared by me or under my direct supervision.

Ernest J. Reed                      11-27-10  
 Signature                                      Date

Registration No. 9808

- Land Surveyor,             Professional Engineer  
 County Surveyor,         County Engineer

### OFFICE OF THE COUNTY RECORDER

County of \_\_\_\_\_

I hereby certify that this document was filed in the County Recorder's office at \_\_\_\_\_ M. on the

\_\_\_\_\_ day of \_\_\_\_\_ A.D., 20\_\_

County Recorder \_\_\_\_\_

BY \_\_\_\_\_ Deputy

**DOCUMENT NO.** \_\_\_\_\_

N1/4 CORNER, SEC. 06, T41, R23  
S1/4 CORNER, SEC. 31, T42, R23

**STATEMENT OF EVIDENCE**

**ALL ORIGINAL BEARING TREES ARE NOW GONE.**

**THERE IS NO RESURVEY DATA ON FILE FOR THIS CORNER.**

**ON FEB. 2, 1983, M.B. RUDE SET THIS CORNER BY SINGLE PROPORTIONAL MEASUREMENT BETWEEN THE NW AND NE CORNERS OF SEC. 6, T.41, R.23.**

**THERE IS AN EXISTING ROAD EAST OF THIS CORNER AND FENCE LINES NORTH AND SOUTH WHICH WERE BUILT WITHOUT A SURVEY; THEREFORE IT CAN NOT BE USED AS EVIDENCE OF THIS CORNER.**

**SINCE 1983 THE FENCES HAVE BEEN REBUILT TO THE CORNER SET BY M. B. RUDE AND THIS FALLS BY THE SOUTH GATE POST OF A GATE TO THE SW 1/4 OF SEC. 31.**

**ON MAY 13, 2010, E.G. RUD AND SONS, INC. ESTABLISHED KANABEC COUNTY COORDINATES ON THIS POSITION.**

3-13-10  
E.G. RUD AND SONS, INC.  
3-13-10