

CERTIFICATE OF LOCATION OF GOVERNMENT CORNER

NORTHEAST Corner of Section 6, Township 41, Range 23, 4TH P.M.
 STATE OF MINNESOTA, County of KANABEC

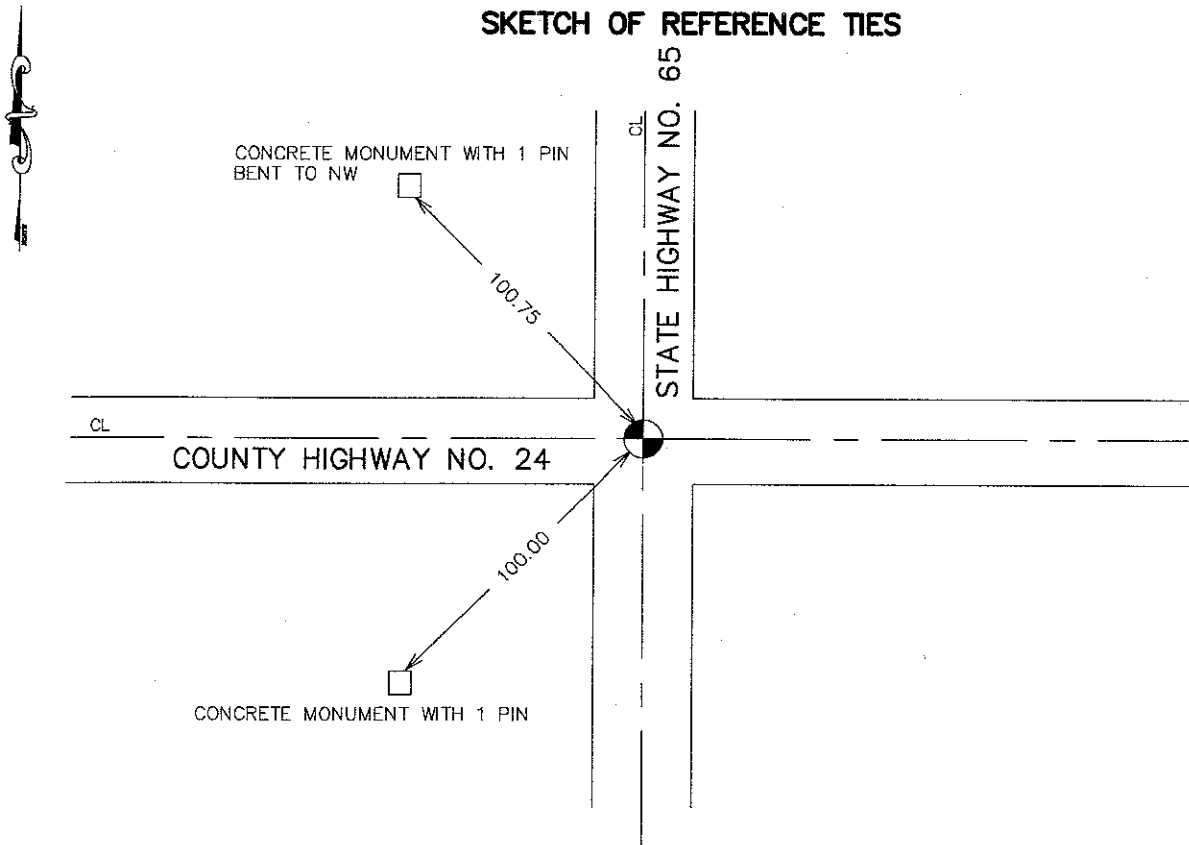
At the corner location shown on the sketch:
 FOUND THIS MONUMENT
 AND ESTABLISHED KANABEC COUNTY COORDINATES ON ITS LOCATION.

Kanabec County U.S. Survey Feet Coordinates
 NAD 1983, HARN 1996 Adjustment
 Obtained by RTK GPS Observation

Northing= 225010.50
 Easting= 402375.57

Note: NAD 1983, HARN 1996 Adjustment
 coordinates are NOT compatible with
 NAD 1983 coordinates
 Note: 1 Meter=3937/1200 U.S. Survey Feet

SKETCH OF REFERENCE TIES



Statement of evidence relative to this corner location is on back of page.

I hereby certify that this document and the data contained herein was prepared by me or under my direct supervision.

Ernest J. Rud 11-25-07
 Signature Date

Registration No. 9808

Land Surveyor, Professional Engineer
 County Surveyor, County Engineer

OFFICE OF THE COUNTY RECORDER

County of _____

I hereby certify that this document was filed in the County Recorder's office at _____ M. on the _____ day of _____ A.D., 20____

County Recorder _____

BY _____ Deputy

DOCUMENT NO. _____

NORTHEAST CORNER SECTION 6, T41, R23

STATEMENT OF EVIDENCE

ALL OF THE ORIGINAL BEARING TREES ARE NOW GONE.

THERE IS A ROAD SURVEY BY JOHN NELSON, THE COUNTY SURVEYOR, DATED IN 1901, FOR A ROAD ALONG THE EAST LINE OF SECTION 6 AND THE NORTH LINE OF SECTION 5 ON FILE AT THE COUNTY RECORDER'S OFFICE.

THE STATE OF MINNESOTA DEPARTMENT OF TRANSPORTATION FOUND AN OLD STAKE AT THIS CORNER AND SET AN IRON PIN AT THIS CORNER WITH REFERENCE MONUMENT AFTER CONSTRUCTION.

ON JANUARY 10, 1983, M.B. RUDE FOUND THE DEPARTMENT OF TRANSPORTATION'S IRON PIN 1.5 FEET BELOW THE SURFACE OF THE HIGHWAY AND THE DEPARTMENT OF TRANSPORTATION'S REFERENCE MONUMENT.

HE ACCEPTED THE DEPARTMENT OF TRANSPORTATION'S PIN AS THE ORIGINAL CORNER LOCATION AND SET A 1/2" IRON PIPE ON TOP OF THE IRON PIN TO MARK THIS CORNER.

IN OCTOBER 2007 E.G. RUD AND SONS FOUND THIS 1/2" IRON PIPE AND ESTABLISHED KANABEC COUNTY COORDINATES ON THIS POSITION.