

CERTIFICATE OF LOCATION OF GOVERNMENT CORNER

NORTH QUARTER Corner of Section 5, Township 41, Range 23, 4TH P.M.

STATE OF MINNESOTA, County of KANABEC

At the corner location shown on the sketch:
On 6/27/2001 Found a 1/2" IRON PIPE #8195.
Set a KANABEC COUNTY MONUMENT

Kanabec County U.S. Survey Feet Coordinates
NAD 1983, HARN 1996 Adjustment
Obtained by RTK GPS Observation

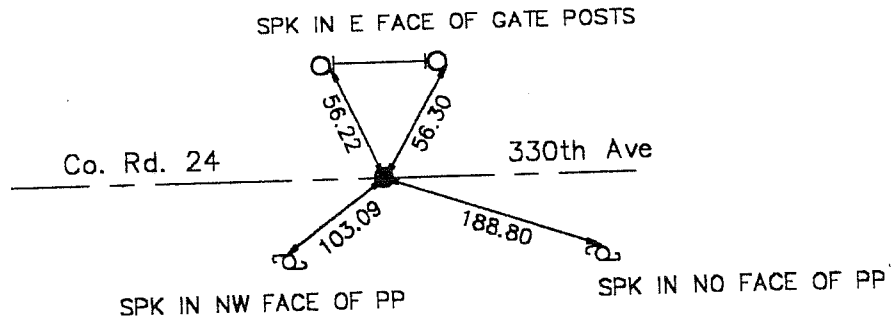
Northing= 224991.641

Easting= 405019.257

Note: NAD 1983, HARN 1996 Adjustment
coordinates are NOT compatible with
NAD 1983 coordinates

Note: 1 Meter=3937/1200 U.S. Survey Feet

SKETCH OF REFERENCE TIES



Statement of evidence relative to this corner location is on back of page.

I hereby certify that this document and the data contained herein was prepared by me or under my direct supervision.

Ernest Blud
Signature

10-03-2002
Date

Registration No. 9808

Land Surveyor, Professional Engineer

County Surveyor, County Engineer

OFFICE OF THE COUNTY RECORDER

County of _____

I hereby certify that this document was filed in the County Recorder's office at _____ M. on the _____ day of _____ A.D., 20____

_____ day of _____ A.D., 20____

County Recorder _____

BY _____ Deputy

DOCUMENT NO. _____

STATEMENT OF EVIDENCE

ORIGINAL CORNER WAS SET ON OCT. 7TH 1851. NO BEARING TREES REMAINING.
NO RECORD OF SURVEYS AT KANABEC COUNTY

FOUND 1/2" IP #8195 SET ON LINE & PROPORTIONATE MEASUREMENT BETWEEN
NE & NW COR OF SEC. 5

IN JUNE 2001 RUD'S LAND SURVEYING DID A SURVEY OF THE NORTH LINE OF
SECS 3, 4, & 5.

ON JUNE 27, 2001 WE EXCAVATED A HOLE 12' DEEP, 2 FEET INTO NATURAL
GROUND. FOUND NO FURTHER EVIDENCE. ACCEPTED 1/2" I.P. AS LOCATION
FOR NW 1/4.

SET KANABEC COUNTY MONUMENT AND TOOK TIES.