

CERTIFICATE OF LOCATION OF GOVERNMENT CORNER

$N \frac{1}{4}$
2
41
23
4 P.M.

$S \frac{1}{4}$
 Corner of Section 35, Township 42, Range 23

STATE OF MINNESOTA, County of KANABEC

At the corner location shown on the sketch:

*Found Cast Iron Monument
set by Norm Hoium in platting
of Linders Addition*

Kanabec County U.S. Survey Feet Coordinates
NAD 1983, HARN 1996 Adjustment
Obtained by RTK GPS Observation

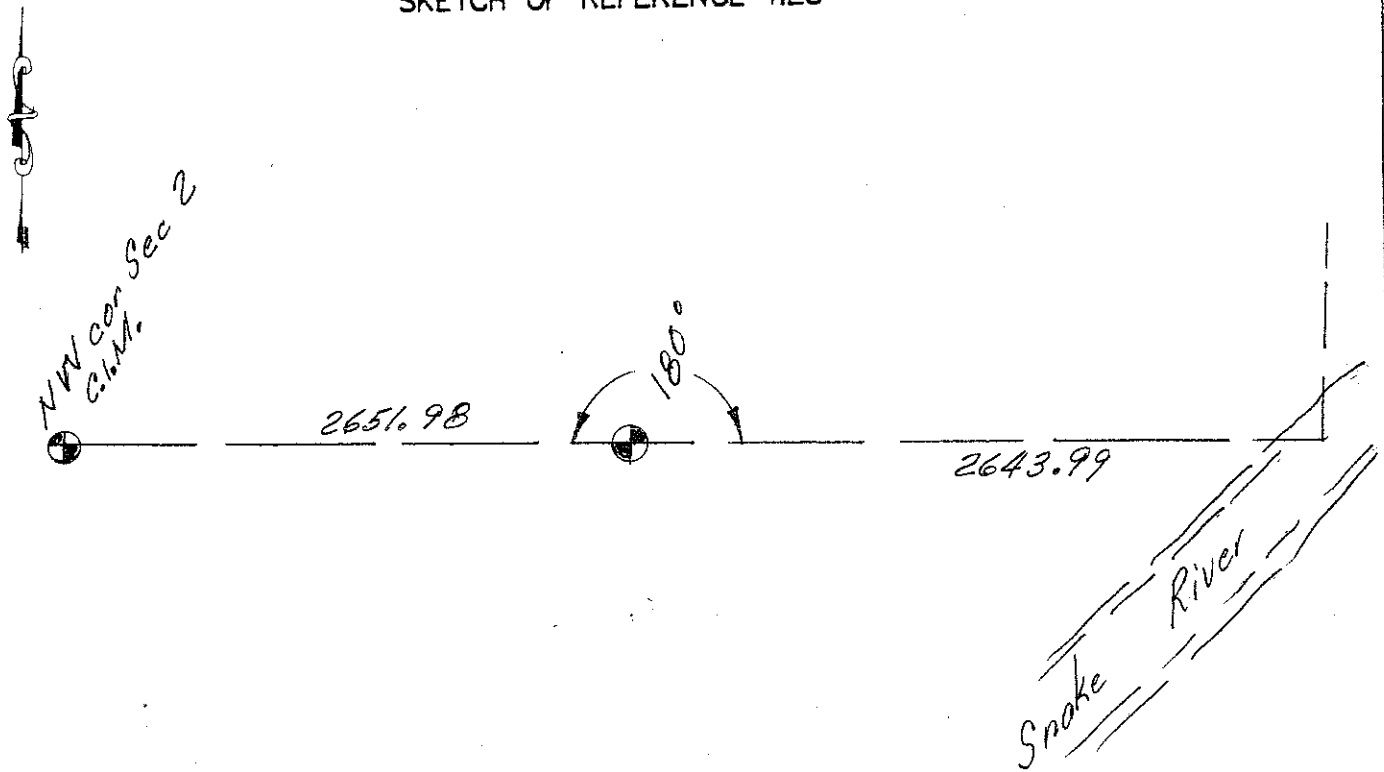
Northing= 224802.55

Easting= 420845.93

Note: NAD 1983, HARN 1996 Adjustment
coordinates are NOT compatible with
NAD 1983 coordinates

Note: 1 Meter=3937/1200 U.S. Survey Feet

SKETCH OF REFERENCE TIES



Statement of evidence relative to this corner location is on back of page.

I hereby certify that this document and the data contained herein was prepared by me or under my direct supervision.

Ernest E. Rud 11-19-12
Signature Date

Registration No. Minn No. 9808

- Land Surveyor, Professional Engineer
 County Surveyor, County Engineer

OFFICE OF THE COUNTY RECORDER

County of _____

I hereby certify that this document was filed in the County Recorder's office at _____ M. on the _____ day of _____ A.D., 20____

County Recorder _____

BY _____ Deputy

DOCUMENT NO. _____

STATEMENT OF EVIDENCE: SOUTH QUARTER 35-42-23 4223046
NORTH QUARTER 2-41-42 4123016

This corner was set by Deputy Surveyor, James Freeman, on October 9, 1851 and 2 bearing trees noted as:

9" Spruce bearing South 36 degrees West at 13 links
12" Elm bearing North 29 degrees at 20 links

No visible evidence was found for corners or bearing trees.

In 1970 Norm Hoium set a C.I.M. at this corner in the plat of Linders Addition.

In 2002 E.G. Rud & Sons located this corner and established Kanabec County coordinates on this position.