

CERTIFICATE OF LOCATION OF GOVERNMENT CORNER

NE 2 41 23
SE Corner of Section 35, Township 42, Range 23, P.M.

STATE OF MINNESOTA, County of KANABEC

At the corner location shown on the sketch:

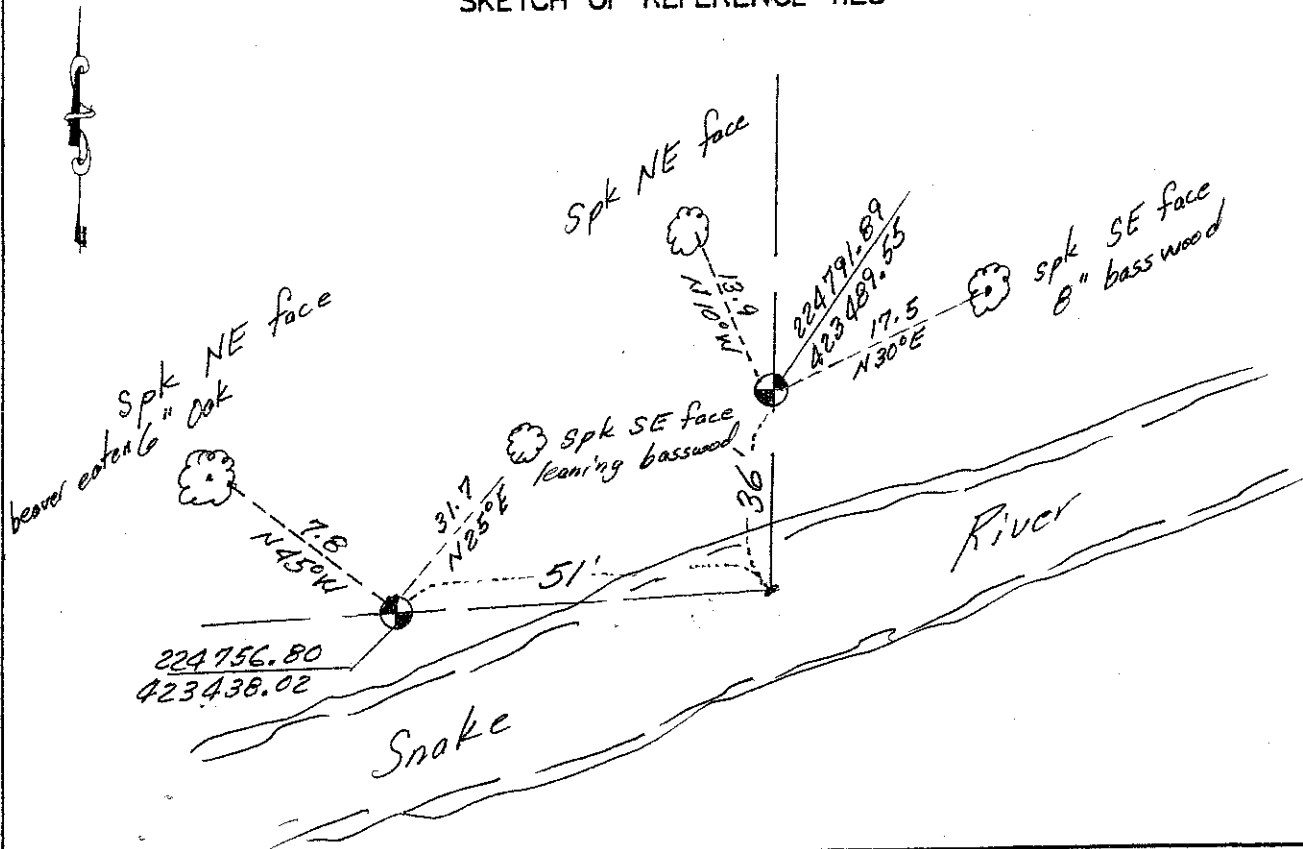
*Actual corner falls in Snake River.
Set W.C. on East & South lines
of Sec 35*

Kanabec County U.S. Survey Feet Coordinates
NAD 1983, HARN 1996 Adjustment
Obtained by RTK GPS Observation

Northing= 224755.90
Easting= 423489.01

Note: NAD 1983, HARN 1996 Adjustment
coordinates are NOT compatible with
NAD 1983 coordinates
Note: 1 Meter=3937/1200 U.S. Survey Feet

SKETCH OF REFERENCE TIES



Statement of evidence relative to this corner location is on back of page.

I hereby certify that this document and the data contained herein was prepared by me or under my direct supervision.

Ernest L. Rud
Signature

Date

Registration No. Minn No. 9808

Land Surveyor, Professional Engineer

County Surveyor, County Engineer

OFFICE OF THE COUNTY RECORDER

County of

I hereby certify that this document was filed in the County Recorder's office at M. on the

 day of A.D., 20

County Recorder

BY Deputy

DOCUMENT NO.

STATEMENT OF EVIDENCE: NORTHEAST CORNER 2-41-23	4223047
SOUTHEAST CORNER 35-42-23	4123015

Northeast corner Section 2

The north line of Township 41, Range 23 was run in October 1851 by James Freeman. This corner fell in the Snake River so a meander post was set on the southeasterly bank at 2 chains east of the corner and a meander post was set on the northwesterly bank 1.3 chains west of the corner. Today we find this corner also falls in the Snake River at distances that agree very close to GLO notes. This was set by extending a line passing through the northwest corner and north quarter corner of Section 2. A witness corner was set on the north and west banks of the Snake River. Reference ties taken and Kanabec County coordinates established on these points.