

# CERTIFICATE OF LOCATION OF GOVERNMENT CORNER

W 1/4  
E 1/4 Corner of Section 18, Township 41, Range 23, 4<sup>TH</sup> P.M.

STATE OF MINNESOTA, County of KANABEC

At the corner location shown on the sketch:

*Set a #7 x 24" rebar with aluminum cap in swamp.*

Kanabec County U.S. Survey Feet Coordinates  
NAD 1983, HARN 1996 Adjustment  
Obtained by RTK GPS Observation

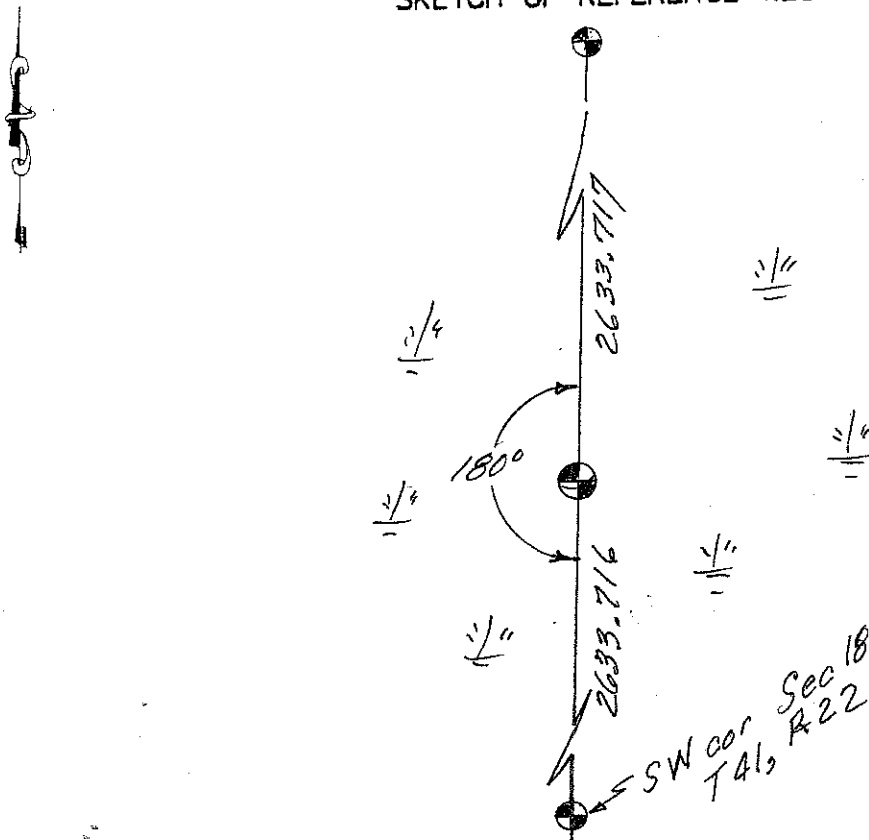
Northing= 210131.64

Easting= 428657.87

Note: NAD 1983, HARN 1996 Adjustment coordinates are NOT compatible with NAD 1983 coordinates

Note: 1 Meter=3937/1200 U.S. Survey Feet

## SKETCH OF REFERENCE TIES



Statement of evidence relative to this corner location is on back of page.

I hereby certify that this document and the data contained herein was prepared by me or under my direct supervision.

*Ernest L. Rud*

Signature

Date

Registration No. Minn No. 9808

Land Surveyor,  Professional Engineer

County Surveyor,  County Engineer

## OFFICE OF THE COUNTY RECORDER

County of \_\_\_\_\_

I hereby certify that this document was filed in the County Recorder's office at \_\_\_\_\_ M. on the

\_\_\_\_\_ day of \_\_\_\_\_ A.D., 20\_\_

County Recorder \_\_\_\_\_

BY \_\_\_\_\_ Deputy

DOCUMENT NO. \_\_\_\_\_

STATEMENT OF EVIDENCE: WEST QUARTER CORNER 18-41-22 4122030  
EAST QUARTER CORNER 13-41-23 4123008

The original government corner was set on October 5, 1849 and 2 bearing trees noted as:

8" Tamarack bearing South 3 degrees West at 215 links

7" Tamarack bearing North 82 degrees East at 37 links

No visible evidence could be found for the corner or bearing trees. No record of subsequent surveys could be found at the Kanabec County office.

In March 2004, E.G. Rud & Sons ran a survey along this township line from the Northeast corner of Section 24 to the Northeast corner of the township. This corner falls in a large swamp with no lines of occupation so we treated this corner as set by lost methods. A 7" rebar was set and Kanabec County coordinates established on this position. In January 2012 this position was verified.