

CERTIFICATE OF LOCATION OF GOVERNMENT CORNER

EAST QUARTER Corner of Section 25, Township 41, Range 23, 4TH P.M.

STATE OF MINNESOTA, County of KANABEC

At the corner location shown on the sketch:
FOUND THIS MONUMENT
AND ESTABLISHED G.P.S. COORDINATES ON ITS LOCATION.

Kanabec County U.S. Survey Feet Coordinates
NAD 1983, HARN 1996 Adjustment
Obtained by RTK GPS Observation

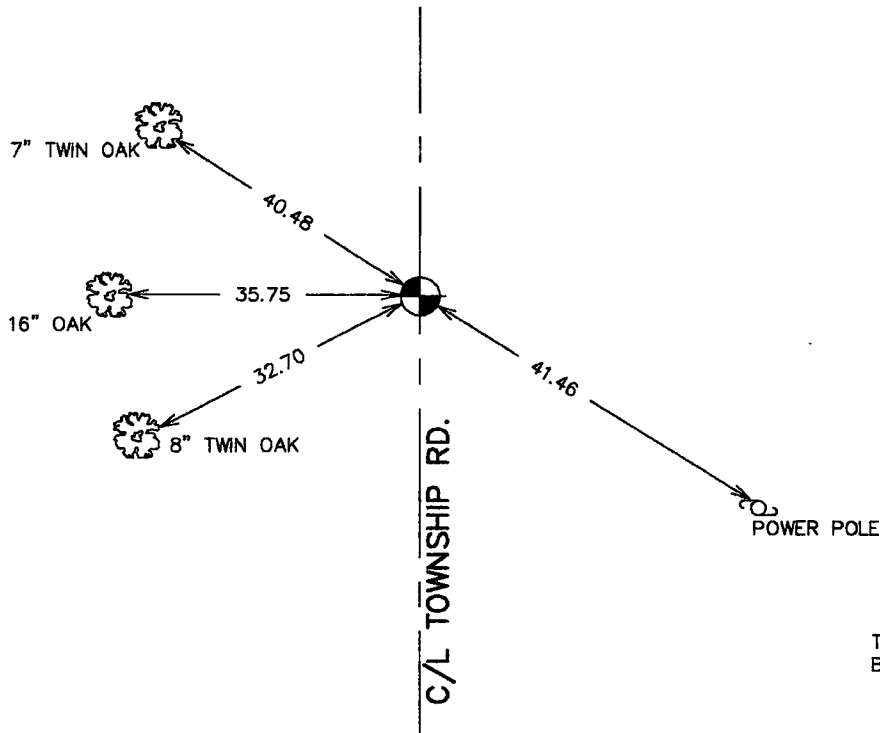
Northing= 199587.13

Easting= 428553.27

Note: NAD 1983, HARN 1996 Adjustment
coordinates are NOT compatible with
NAD 1983 coordinates

Note: 1 Meter=3937/1200 U.S. Survey Feet

SKETCH OF REFERENCE TIES



TIES ARE TO A SPK. IN
BLAZE IN NEAR FACE

Statement of evidence relative to this corner location is on back of page.

I hereby certify that this document and the data contained herein was prepared by me or under my direct supervision.

Ernest J. Rud
Signature

9-11-2006
Date

Registration No. Minn No 9808

Land Surveyor, Professional Engineer

County Surveyor, County Engineer

OFFICE OF THE COUNTY RECORDER

County of Kanabec

I hereby certify that this document was filed in the County Recorder's office at 8:00A M. on the

13th day of Sept A.D., 2006

County Recorder Rhonda Olson

BY _____ Deputy

DOCUMENT NO. _____

EAST QUARTER CORNER SECTION 25, T41, R23

STATEMENT OF EVIDENCE

ALL OF THE ORIGINAL GOVERNMENT BEARING TREES ARE NOW GONE.

THERE IS A TOWN ROAD ORDER AND SURVEY BY JOHN BUCKLEY THAT SHOWS A SANDSTONE WITH A + CUT IN IT AT THIS CORNER AND DATED AUGUST 26, 1919.

IN 1985, M.B. RUDE SET THIS CORNER AT THE PI OF THE ROAD SOUTH AND EAST AT THE LOCATION OF A PILE OF SMALL ROCKS. HE THEN FINDS THAT THE DESCRIPTION IN THE TOWN ROAD ORDER CALLS FOR THE EAST-WEST ROAD TO INTERSECT THE TOWN LINE AT A POINT 300 FEET NORTH OF THE QUARTER CORNER. BUCKLEY'S SURVEY SKETCH SHOWS THE ROAD TO INTERSECT AT THE QUARTER CORNER.

ON OCTOBER 11, 1988, M.B. RUDE MADE AN EXCAVATION AT A POINT 290 TO 305 FEET SOUTH OF THE ROAD P.I. WITH THE COUNTY BACKHOE. HE FOUND TWO SANDSTONES IN THE EXCAVATION, BUT NONE MARKED WITH A + PER BUCKLEYS SURVEY OF 1919.

M.B. RUDE SET THIS CORNER BY SINGLE PROPORTIONAL MEASUREMENT BETWEEN THE SOUTHEAST CORNER OF SECTION 25 AND THE NORTHEAST CORNER OF SECTION 24.

THIS LOCATION IS APPROXIMATELY 295 FEET SOUTH OF THE ROAD PI AND FITS THE CENTERLINE OF THE EXISTING ROAD. BUCKLEY'S DISTANCE FOR THE EAST LINE OF THE SOUTHEAST QUARTER OF SECTION 25 WAS 2640 FEET AND OUR MEASUREMENT IS 2637.12 FEET.

IN JULY 2006 E.G. RUD AND SONS RAN A SURVEY ALONG CO. RD. NO. 5 , FOUND THIS MONUMENT, VERIFIED OR TOOK TIES AND ESTABLISHED KANABEC COUNTY COORDINATES ON THIS POSITION USING G.P.S. EQUIPMENT.