

CERTIFICATE OF LOCATION OF GOVERNMENT CORNER

NORTHEAST Corner of Section 36, Township 41, Range 23, 4TH P.M.
STATE OF MINNESOTA, County of KANABEC

At the corner location shown on the sketch:
FOUND KANABEC COUNTY MONUMENT
AND ESTABLISHED G.P.S. COORDINATES ON ITS LOCATION.

Kanabec County U.S. Survey Feet Coordinates
NAD 1983, HARN 1996 Adjustment
Obtained by RTK GPS Observation

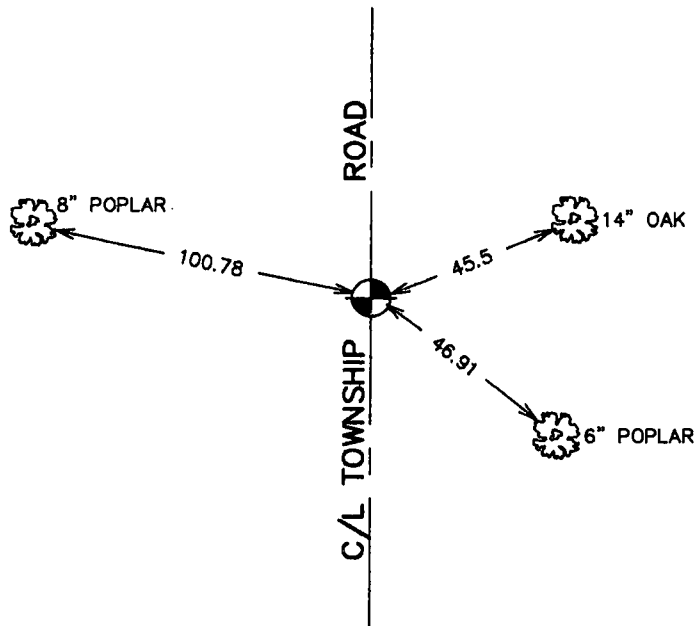
Northing= 196950.24

Easting= 428540.07

Note: NAD 1983, HARN 1996 Adjustment
coordinates are NOT compatible with
NAD 1983 coordinates

Note: 1 Meter=3937/1200 U.S. Survey Feet

SKETCH OF REFERENCE TIES



TIES ARE TO A SPK. IN
BLAZE IN NEAR FACE

Statement of evidence relative to this corner location is on back of page.

I hereby certify that this document and the data contained herein was prepared by me or under my direct supervision.

Ernest Blud 8-22-2006
Signature Date

Registration No. Minn No 9808

Land Surveyor, Professional Engineer

County Surveyor, County Engineer

OFFICE OF THE COUNTY RECORDER

County of Kanabec

I hereby certify that this document was filed in the County Recorder's office at 10:00A M. on the

23rd day of August A.D., 2006

County Recorder Rhonda A Olson

BY _____ Deputy

DOCUMENT NO. _____

NORTHEAST CORNER SECTION 36, T41, R23

STATEMENT OF EVIDENCE

ALL OF THE ORIGINAL GOVERNMENT BEARING TREES ARE NOW GONE.

THERE IS NO RESURVEY DATA ON FILE FOR THIS CORNER.

ON AUGUST 20, 1985, M.B. RUDE RAN A SURVEY FROM THE SOUTHEAST CORNER OF SECTION 36, TOWNSHIP 41, RANGE 23 TO THE NORTH LINE OF SECTION 30, TOWNSHIP 41, RANGE 22, TO LOCATE EXISTING MONUMENTS, LINES OF OCCUPATION AND TO SEARCH THE AREA.

THIS CORNER FALLS AT THE INTERSECTION OF A NORTH-SOUTH ROAD AND ROCK LINE AT THE EDGE OF THE FIELDS EAST AND WEST.

ON AUGUST 20, 1985, AN EXCAVATION WAS MADE WITH A BACKHOE AT THIS LOCATION. THE EXCAVATION WAS 15 FEET SQUARE, 3 FEET DEEP, 1 FOOT INTO NATURAL GROUND. NO EVIDENCE WAS FOUND IN THE EXCAVATION

THE INTERSECTION OF THE CENTERLINE OF THE NORTH-SOUTH ROAD AND ROCK LINES EAST AND WEST WERE ACCEPTED AS THE BEST AVAILABLE EVIDENCE OF THE ORIGINAL CORNER LOCATION.

IN JULY 2006 E.G. RUD AND SONS RAN A SURVEY ALONG THE CO. RD. NO. 5, FOUND THIS MONUMENT, VERIFIED AND TOOK TIES AND ESTABLISHED KANABEC COUNTY COORDINATES ON THIS POSITION USING G.P.S. EQUIPMENT.