

# CERTIFICATE OF LOCATION OF GOVERNMENT CORNER

EAST  
~~WEST~~ QUARTER Corner of Section 36, Township 41, Range 23  
~~22~~, 4TH P.M.

STATE OF MINNESOTA, County of KANABEC

At the corner location shown on the sketch:  
FOUND MONUMENT  
AND ESTABLISHED G.P.S. COORDINATES ON ITS LOCATION.

Kanabec County U.S. Survey Feet Coordinates  
NAD 1983, HARN 1996 Adjustment  
Obtained by RTK GPS Observation

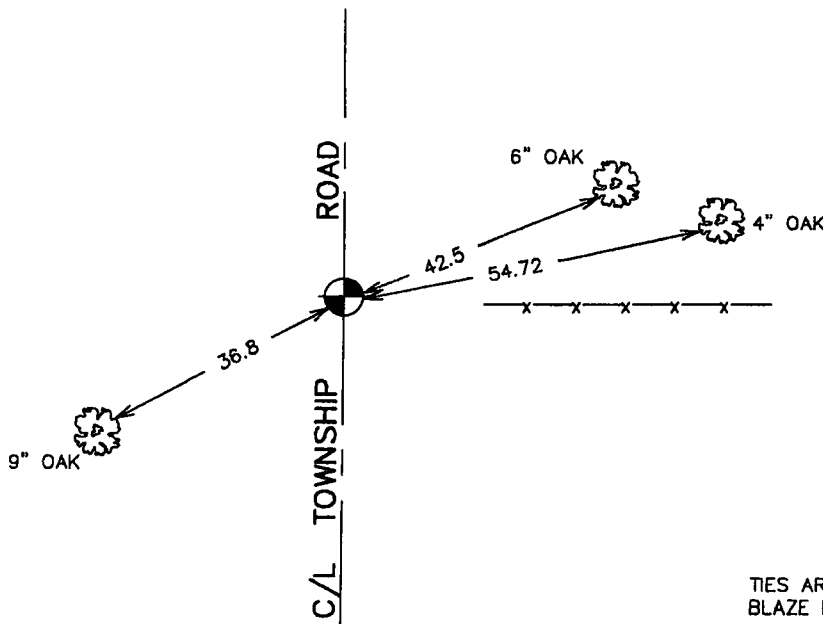
Northing= 194308.83

Easting= 428516.72

Note: NAD 1983, HARN 1996 Adjustment  
coordinates are NOT compatible with  
NAD 1983 coordinates

Note: 1 Meter=3937/1200 U.S. Survey Feet

## SKETCH OF REFERENCE TIES



TIES ARE TO A SPK. IN  
BLAZE IN NEAR FACE

Statement of evidence relative to this corner location is on back of page.

I hereby certify that this document and the data contained herein was prepared by me or under my direct supervision.

Ereest Reed  
Signature

8-22-2006  
Date

Registration No. Minn No 9808

Land Surveyor,  Professional Engineer

County Surveyor,  County Engineer

## OFFICE OF THE COUNTY RECORDER

County of Kanabec

I hereby certify that this document was filed in the County Recorder's office at 10:00 A.M. on the

23rd day of August A.D., 2006

County Recorder Rhonda A Dism

BY \_\_\_\_\_ Deputy

DOCUMENT NO. \_\_\_\_\_

W 1/4 CORNER SECTION 31, T41, R22

**STATEMENT OF EVIDENCE**

ALL OF THE ORIGINAL BEARING TREES ARE NOW GONE.

THERE IS NO RESURVEY DATA ON FILE FOR THIS CORNER.

ON AUGUST 20, 1985, M.B. RUDE RAN A SURVEY FROM THE SOUTHEAST CORNER OF SECTION 36, TOWNSHIP 41, RANGE 23, TO THE NORTH LINE OF SECTION 30, TOWNSHIP 41, RANGE 22, TO LOCATE EXISTING MONUMENTS, LINES OF OCCUPATION AND TO SEARCH THE AREA.

THIS CORNER FALLS ON A NORTH-SOUTH ROAD AND AN OLD FENCE LINE EAST.

ON AUGUST 20, 1985, AN EXCAVATION WAS MADE WITH A BACKHOE AT THIS LOCATION. THE EXCAVATION WAS 10 FEET EAST AND WEST BY 16 FEET NORTH AND SOUTH, 2.5 FEET DEEP. NO EVIDENCE WAS FOUND IN THE EXCAVATION.

THE CENTERLINE OF THE NORTH-SOUTH ROAD AND THE WESTERLY EXTENSION OF THE OLD FENCE LINE EAST WAS ACCEPTED AS THE BEST AVAILABLE EVIDENCE OF THE ORIGINAL CORNER LOCATION. THIS CORNER IS 2.15 FEET WEST AND 3.20 FEET SOUTH OF A LINE AND SPLIT BETWEEN THE SOUTHEAST AND NORTHEAST CORNERS OF SECTION 36.

IN JULY 2006 E.G. RUD AND SONS RAN A SURVEY ALONG CO. RD. NO. 5, FOUND THIS MONUMENT, VERIFIED OR TOOK TIES AND ESTABLISHED KANABEC COUNTY COORDINATES ON THIS POSITION USING G.P.S. EQUIPMENT.