

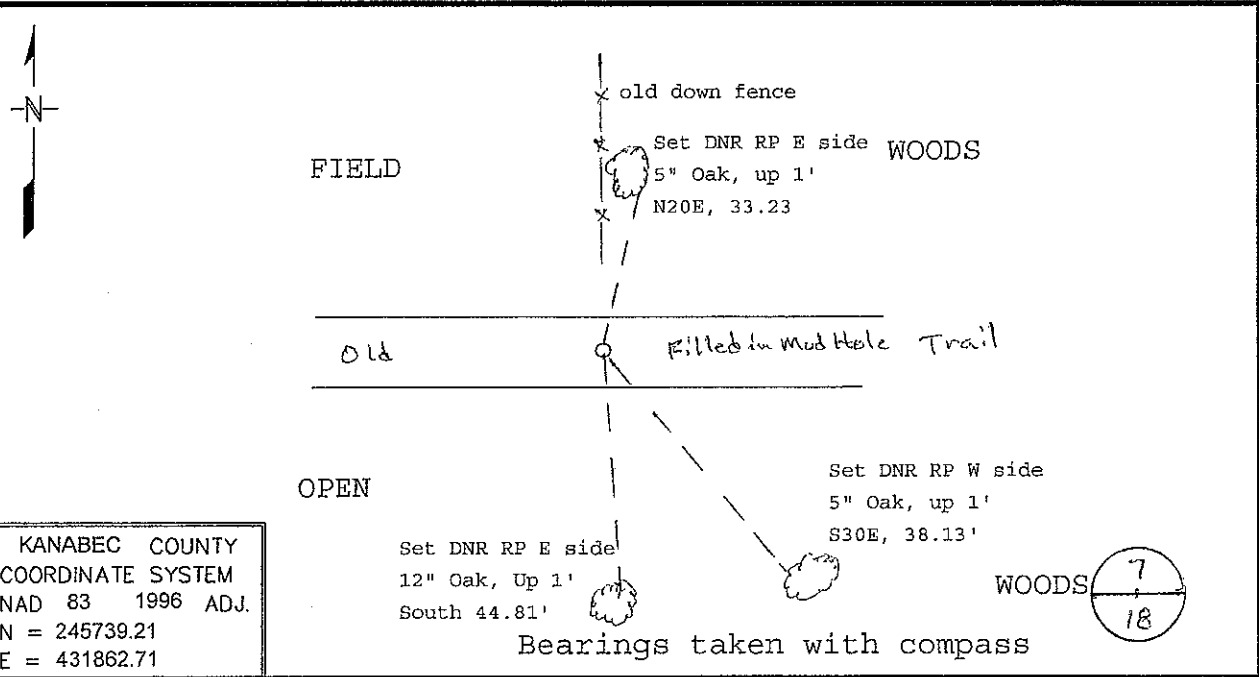
Index No. J-3

CERTIFICATE OF LOCATION OF GOVERNMENT CORNER

North Quarter Corner of Section 18, Township 42, Range 22
4th Principal Meridian, State of Minnesota, County of Kanabec

At the corner location shown on the sketch:

- On _____ found on _____
DATE
- left monument as found, lowered monument, removed monument (explain)
- On 11-24-09 Placed a 3/4" X 24" Rebar with LLS #16098 cap at the lost position.
DATE



KANABEC COUNTY
COORDINATE SYSTEM
NAD 83 1996 ADJ.
N = 245739.21
E = 431862.71

7
18

Statement of evidence for this corner location is on back of this page.

SFT00056 - Req.1289
JDW 12/23/09

I certify that this document was researched and prepared by me or under my direct supervision.

SIGNATURE *John D. Walker* DATE 11/24/2010 License Number 16098

Title: Land Surveyor Professional Engineer County Surveyor County Engineer

North Quarter Corner Section 18, Township 42 North, Range 22 West

The DNR Bureau of Engineering contacted the following for survey information:

Minnesota Secretary of State's Office
 Kanabec County Recorder's Office
 Kanabec County Highway Engineer
 Kanabec County Surveyor
 Bill Hayden, Land Surveyor
 Terrence Johnson, Land Surveyor

1855 U.S. General Land Office notes obtained from the Secretary of State's Office states that a post was set to mark the corner with the following bearing trees marked:

W. Pine 22" N 48° 30' W 24 links (15.84 feet)

W. Pine 20" S 5° 15' E 10 links (6.60 feet)

The distance to the Northeast corner was 40 chains and 42.15 chains to the Northwest corner.

1909 County Surveyor, John Nelson, surveyed a road through the quarter corner. Set stone marked + for quarter corner at 39.62 chains (2614.92') from the NE section corner and 41.77 chains (2756.82') from the northwest corner.

1997 MN DNR Bureau of Engineering searched for the corner at the lost position and found nothing. Corner falls in mud hole in east- west trail.

2009 MN DNR Lands and Minerals survey crew relocated the northeast and northwest corners of section 18 and computed the corner lost. The difference for the proportion position using Nelson's survey distance is 0.7' east of using the GLO distance proportion. The GLO proportion was used for the corner. A ¾" x24" rebar with LLS cap #16098 was set to mark the lost position of the corner. This position fell about 3.5' north of the centerline of the old trail and in line with a down fence line to the north.

Measurements to the section corners east and west are:

S89°45'27"E 2602.24 feet

N89°45'27"W 2742.01 feet

For more information on our survey in this area please contact MN DNR, Bureau of Engineering, Survey Section, 1601 Minnesota Drive, Brainerd, MN 56401