

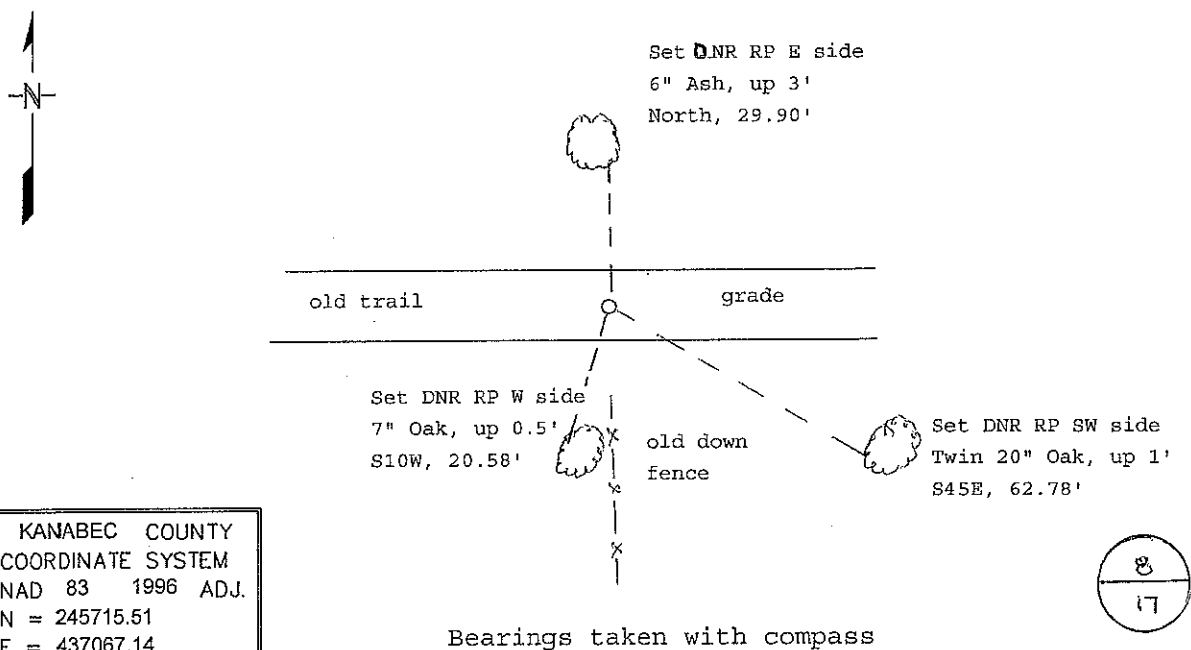
Index No. J-7

# CERTIFICATE OF LOCATION OF GOVERNMENT CORNER

North Quarter Corner of Section 17, Township 42, Range 22  
4th Principal Meridian, State of Minnesota, County of Kanabec

At the corner location shown on the sketch:

- On \_\_\_\_\_ found a \_\_\_\_\_  
DATE
- left monument as found,  lowered monument,  removed monument (explain)
- On 11-24-09 Placed a 3/4" X 24" Rebar with LLS #16098 cap at the lost position.  
DATE



KANABEC COUNTY  
 COORDINATE SYSTEM  
 NAD 83 1996 ADJ.  
 N = 245715.51  
 E = 437067.14

Statement of evidence for this corner location is on back of this page. SFT00056 - Req.1289  
JDW 12/23/09

I certify that this document was researched and prepared by me or under my direct supervision.

SIGNATURE John D. Walker DATE 11/24/2010 License Number 16098  
 Title:  Land Surveyor  Professional Engineer  County Surveyor  County Engineer

North Quarter Corner Section 17, Township 42 North, Range 22 West

The DNR Bureau of Engineering contacted the following for survey information:

Minnesota Secretary of State's Office  
Kanabec County Recorder's Office  
Kanabec County Highway Engineer  
Kanabec County Surveyor  
Bill Hayden, Land Surveyor  
Terrence Johnson, Land Surveyor

- 1855 U.S. General Land Office notes obtained from the Secretary of State's Office states that a post was set to mark the corner with the following bearing trees marked:  
Sugar 12" N 15° 15' E 20 links (13.20 feet)  
Sugar 9" S 9° 15' W 22 links (14.52 feet)
- 1909 County Surveyor, John Nelson, surveyed a road through the quarter corner. Set stake for quarter corner at 39.62 chains (2614.92') from the section corners.
- 1998 MN DNR Bureau of Engineering considered this corner lost and established a position for it by single proportion. The corners used for the proportion are the Northeast Corner Section 17 and the Northeast Corner Section 18. The corner was not searched for and no monument was set at this time.  
Measurements to the section corners east and west are:  
S89°43'35"E 2602.47 feet  
N89°43'35"W 2602.47 feet
- 2009 MN DNR Lands and Minerals survey crew searched for the corner at the 1998 computed location. No original evidence was found. A 3/4" x24" rebar with LLS cap #16098 was set to mark the lost position of the corner. This falls in the centerline of an old trail and in line with a down fence line to the south. Ties were taken as shown on the face of this certificate.

For more information on our survey in this area please contact MN DNR, Bureau of Engineering, Survey Section, 1601 Minnesota Drive, Brainerd, MN 56401