

4222 126

Index No. J-5

CERTIFICATE OF LOCATION OF GOVERNMENT CORNER

NORTHEAST Corner of Section 18, Township 42, Range 22, 4TH P.M.

STATE OF MINNESOTA, County of KANABEC

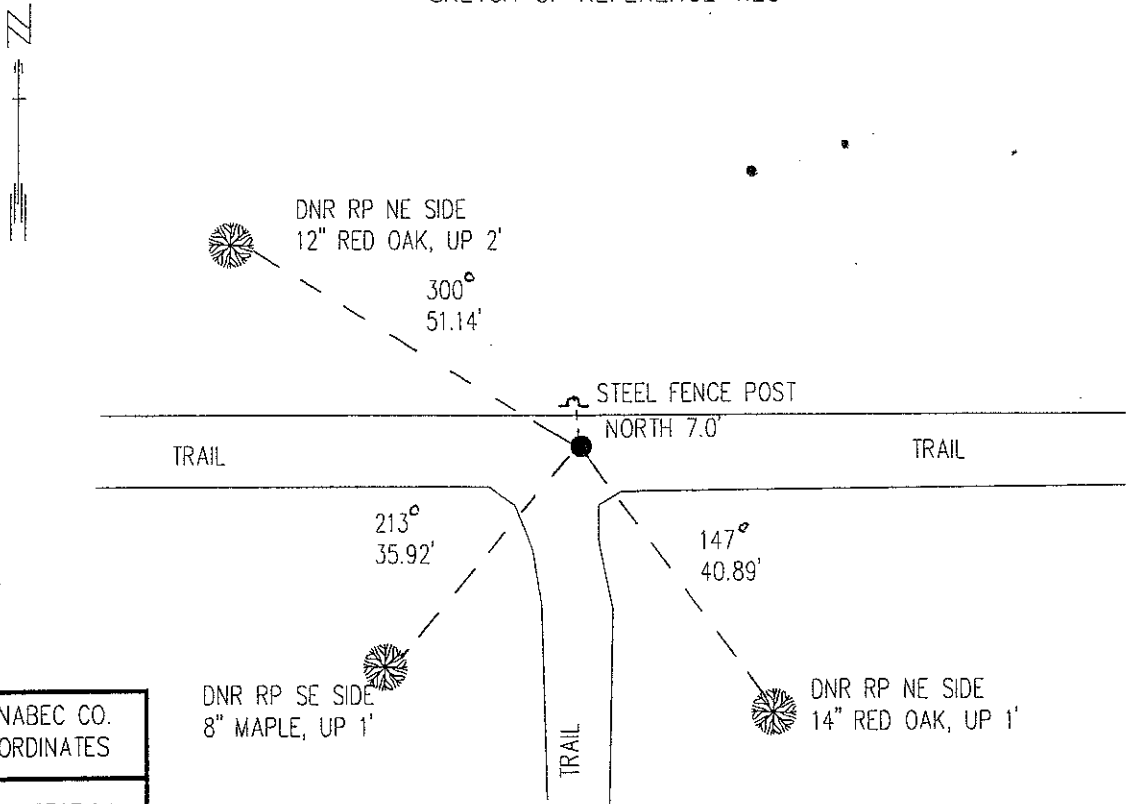
At the corner location shown on the sketch:

On _____ found a _____
DATE

left monument as found, lowered monument, removed monument (explain)

On 10/26/98 Placed a 3/4" X 24" IRON ROD WITH "MN DNR SURVEY MARKER" CAP
DATE

SKETCH OF REFERENCE TIES



KANABEC CO. COORDINATES
 N 245727.94
 E 434464.69

AZIMUTHS OBSERVED WITH COMPASS

Statement of evidence relative to this corner location is on back of page.

12/98
WMA00271

I hereby certify that this document and the data contained herein was prepared by me or under my direct supervision.

John D. Walker 12/8/98
SIGNATURE DATE

License Number 16098

Land Surveyor, Professional Engineer
 County Surveyor, County Engineer

OFFICE OF THE COUNTY RECORDER
County of _____

I hereby certify that this document was filed in the Co. recorders office at _____ M. on the _____ day of _____ A.D., 19____

County Recorder _____
By _____, Deputy

DOCUMENT NO. _____

Northeast Corner Section 18, Township 42 North, Range 22 West

The DNR Bureau of Engineering contacted the following for survey information:

Minnesota Secretary of State's Office
Kanabec County Recorders's Office
Kanabec County Highway Engineer
Kanabec County Surveyor
Bill Hayden, Land Surveyor
Terrence Johnson, Land Surveyor

1855 U.S. General Land Office notes obtained from the Secretary of State's Office states that a post was set to mark the corner with the following bearing trees marked:

W. Birch 8" N 86° 35' E 10 links (6.60 feet)
Balsam 7" N 81° 25' W 14 links (9.24 feet)
Balsam 12" S 60° 45' E 14 links (9.24 feet)
Balsam 9" S 17° W 31 links (20.46 feet)

1909 County Surveyor, John Nelson, surveyed a road through the section corner with the following bearing trees marked:

Pine stump ? N 14° E 58 links (38.28 feet)
Pine stump ? S 15° 30' E 55 links (36.30 feet)

1997 MN DNR Bureau of Engineering searched for the corner at the lost position and found nothing.

1998 MN DNR Bureau of Engineering set a DNR Survey Marker at the intersection of trails east, west, and south. Ties taken as shown on the face of this certificate. Measurements to the quarter corners north, east and section corner west are:

N01°32'06"E 2625.25 feet
S89°43'35"E 2602.47 feet
N89°44'58"W 5344.11 feet

For more information on our survey in this area please contact MN DNR, Bureau of Engineering, Survey Section, 1601 Minnesota Drive, Brainerd, MN 56425