

4222125

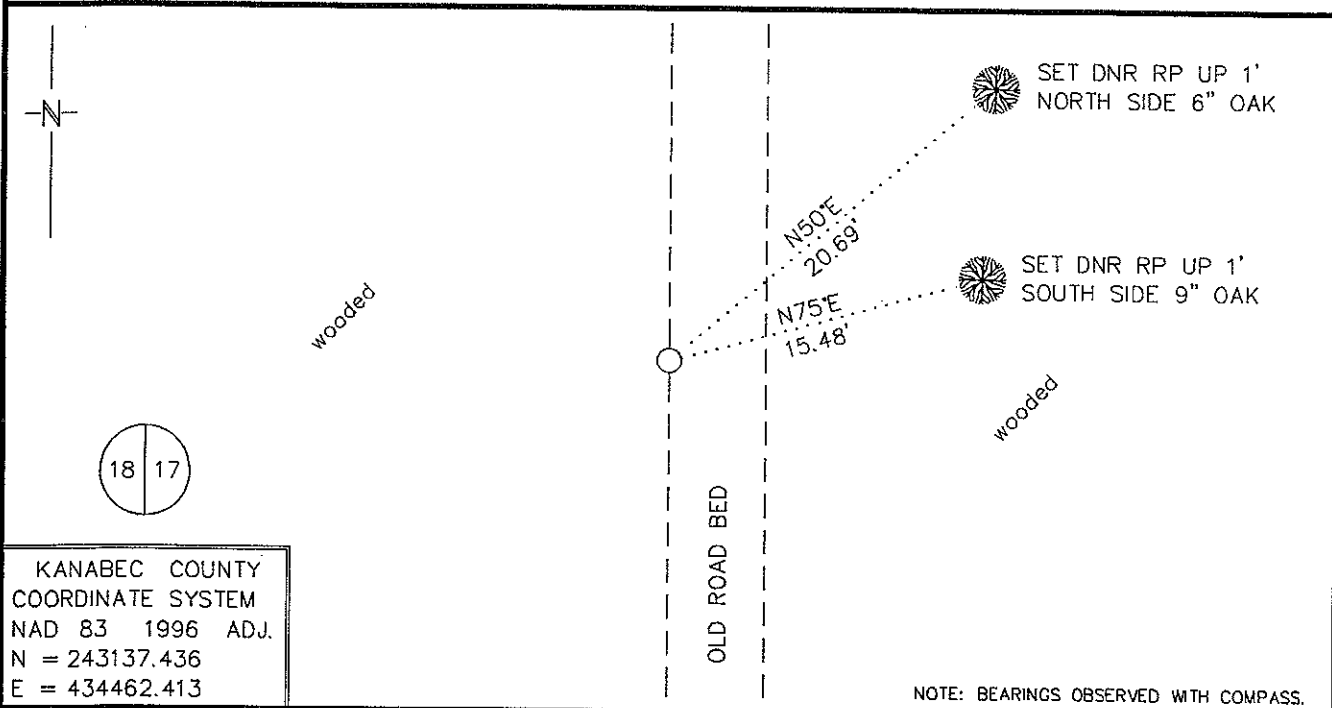
Index No. _____ L-5 _____

CERTIFICATE OF LOCATION OF GOVERNMENT CORNER

EAST QUARTER Corner of Section 18, Township 42, Range 22
4TH Principal Meridian, State of Minnesota, County of KANABEC

At the corner location shown on the sketch:

- On _____ found a _____
DATE
- left monument as found, lowered monument, removed monument (explain)
- On 2/2/2010 Placed a 3/4" X 24" REBAR WITH PLASTIC CAP STAMPED "MN DNR LS 16098"
DATE
AT A LOST POSITION



Statement of evidence for this corner location is on back of this page. RAL APRIL 2010 SFT00056.00.00.01

I certify that this document was researched and prepared by me or under my direct supervision.

SIGNATURE John D. Walker DATE 7/2/2010 License Number 16098

Title: Land Surveyor Professional Engineer County Surveyor County Engineer

East Quarter Corner Section 18, Township 42 North, Range 22 West

The Department of Natural Resources, Division of Lands and Minerals, contacted the following offices for information regarding this corner:

MN Secretary of State
 Kanabec County Surveyor
 Kanabec County Recorder's Office
 Kanabec County Engineer's Office
 E.G. Rud & Sons, Inc., Land Surveyors
 Kroschel Land Surveyors, Inc.

1855 The US General Land Office field notes, on file in the Secretary of State's Office, show this corner to be marked with a post and the following bearing trees were marked:

White Pine 20"	S51°15'W	26 links (17.16')
White Pine 22"	N53°15'E	21 links (13.86')

1909 John Nelson, Kanabec County Surveyor, made a survey in sections 17 and 18. He measured from the Northwest Corner Section 17 southerly on the line between the sections and at 78.2 chains (5161.2') located the southwest corner of Section 17. He then set the quarter corner at a split. From this corner he ran westerly to the West Quarter Corner of Section 18 and established the center of section at a proportion east and west. This survey was for staking the lines of the Northwest Quarter in both sections. He never went to the South Quarter or Southwest Corners of section 18.

2010 In February, the DNR survey crew searched for evidence of the corner and found nothing. An old road bed was located along the east line of the Northeast Quarter. After review, the corner was considered lost and established on line and midway between the Northeast and Southeast corners of the section. This position falls on the west edge of the old road bed. A ¾" x 24" rebar with plastic cap stamped "MN DNR LS 16098" was set to mark the corner.

Northeast Corner Section 18 bears N00°03'16"E 2590.75'
 Southeast Corner Section 18 bears S00°03'16"W 2590.75'

For more information on our survey in this area, please contact MN DNR, Division of Lands and Minerals, Survey Section, 1601 Minnesota Drive, Brainerd, MN 56401