

4222124

Index No. N-3

CERTIFICATE OF LOCATION OF GOVERNMENT CORNER

NORTH QUARTER Corner of Section 19, Township 42, Range 22

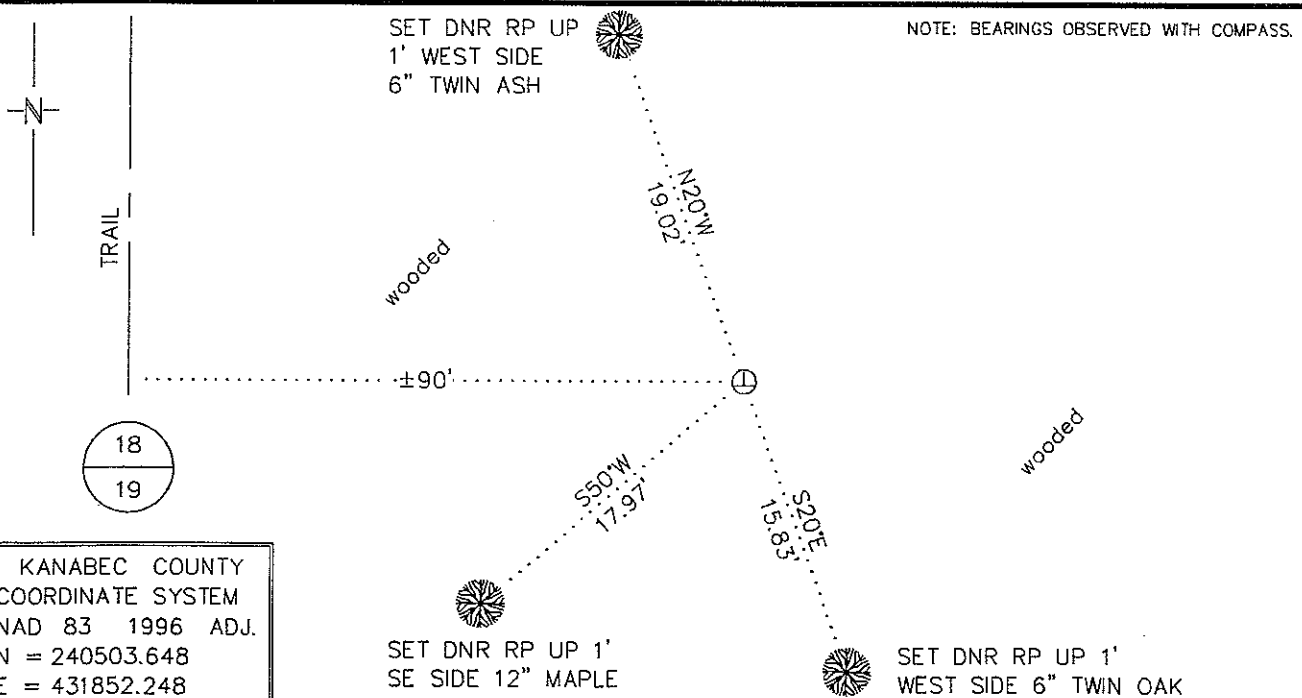
4TH Principal Meridian, State of Minnesota, County of KANABEC

At the corner location shown on the sketch:

On found a
DATE

left monument as found, lowered monument, removed monument (explain)

On 2/2/2010 Placed a "U" STYLE STEEL FENCE POST UP 1' AT NORTH EDGE OF SLASH
DATE
+/- 90' EAST OF N-S TRAIL



Statement of evidence for this corner location is on back of this page.

RAL APRIL 2010
SFT00056.00.00.01

I certify that this document was researched and prepared by me or under my direct supervision.

SIGNATURE John D. Walker DATE 2/2/2010 License Number 16098

Title: Land Surveyor Professional Engineer County Surveyor County Engineer

North Quarter Corner Section 19, Township 42 North, Range 22 West

The Department of Natural Resources, Division of Lands and Minerals, contacted the following offices for information regarding this corner:

MN Secretary of State
 Kanabec County Surveyor
 Kanabec County Recorder's Office
 Kanabec County Engineer's Office
 E.G. Rud & Sons, Inc., Land Surveyors
 Kroschel Land Surveyors, Inc.

1855 The US General Land Office field notes, on file in the Secretary of State's Office, show this corner to be marked with a post and the following bearing trees were marked:

White Pine 24"	S19°45'W	23 links (15.18')
White Birch 18"	N50°30'E	33 links (21.78')

GLO measured 82.20 chains (5425.2') across the north line of the section.

1909 John Nelson, Kanabec County Surveyor, made a survey in sections 17 and 18. He measured from the Northwest Corner Section 17 southerly on the line between the sections and at 78.2 chains (5161.2') located the southwest corner of Section 17. He then set the quarter corner at a split. From this corner he ran westerly to the West Quarter Corner of Section 18 and established the center of section at a proportion east and west. This survey was for staking the lines of the Northwest Quarter in both sections. He never went to the South Quarter or Southwest Corners of section 18.

2010 In February, the DNR survey crew searched for evidence of the corner and found nothing. The corner was considered lost and established by single proportion measurement on line between the Northeast and Northwest corners of the section. A "U" style steel fence post was set to mark the corner.

Northeast Corner Section 19 bears N89°03'16"E 2608.06'

Northwest Corner Section 19 bears S89°03'16"W 2751.50'

For more information on our survey in this area, please contact MN DNR, Division of Lands and Minerals, Survey Section, 1601 Minnesota Drive, Brainerd, MN 56401