

Index No. 4222123

CERTIFICATE OF LOCATION OF GOVERNMENT CORNER

North quarter Corner of Section 20, Township 42, Range 22, 4th P.M.

STATE OF MINNESOTA, County of KANABEC

At the corner location shown on the sketch:

*set a 7/8" rebar 24" long with aluminum
County cap.*

Kanabec County U.S. Survey Feet Coordinates
NAD 1983, HARN 1996 Adjustment
Obtained by RTK GPS Observation

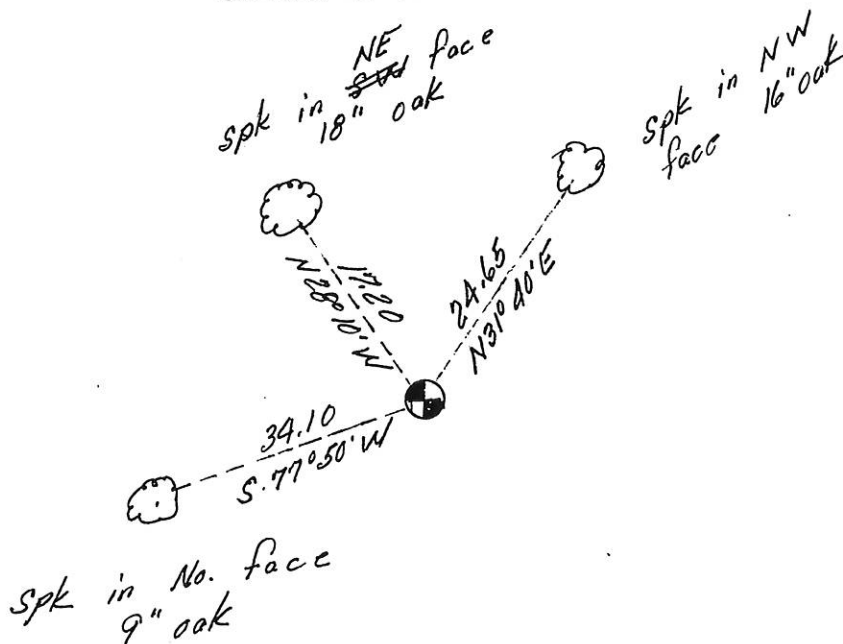
Northing= 240197.27

Easting= 437085.10

Note: NAD 1983, HARN 1996 Adjustment
coordinates are NOT compatible with
NAD 1983 coordinates

Note: 1 Meter=3937/1200 U.S. Survey Feet

SKETCH OF REFERENCE TIES



Statement of evidence relative to this corner location is on back of page.

I hereby certify that this document and the data contained herein was prepared by me or under my direct supervision.

Ernest L. Rud
Signature

April 28, 2014
Date

Registration No. 9808

Land Surveyor, Professional Engineer

OFFICE OF THE COUNTY RECORDER

County of _____

I hereby certify that this document was filed in the County Recorder's office at _____ M. on the

_____ day of _____ A.D., 20____

County Recorder _____

BY _____ Deputy

The original Government post was set by U.S. Deputy Surveyor Silas Banker on November 23, 1855 and 2 bearing trees noted as being;

12" White Birch bearing North 37° 30' West at 7 Links

10" White Birch bearing South 11° 30' West at 22 Links

No evidence for the post or bearing trees could be found.

This corner falls in a heavily wooded area with no immediate lines of occupation. No records of any subsequent surveys were found at Kanabec County Offices.

Therefore we determined this to be a lost corner and set it on line and equidistant between the northeast and the northwest corners of Section 20. A 7/8" x 24" rebar was set, ties taken and Kanabec County Coordinates established on this position. There was a new fence on the west line of the north half of the southeast quarter of Section 20 which we fell 15 feet west of.