

4222122

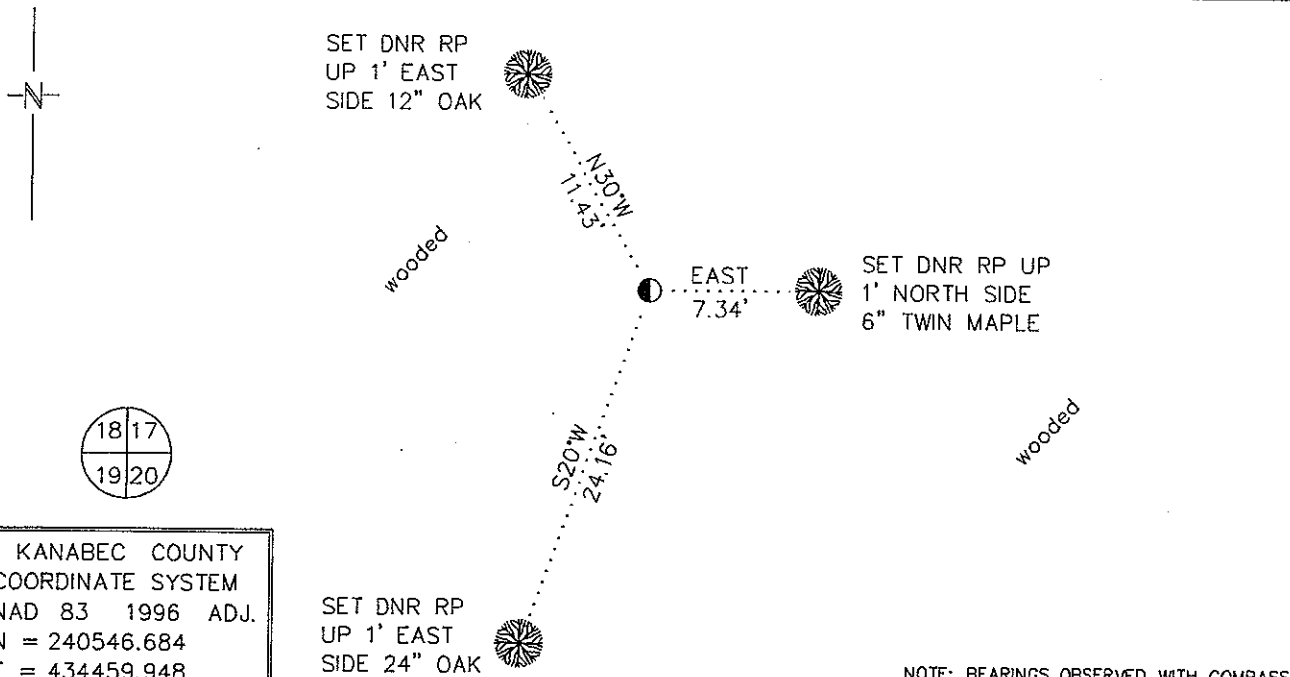
Index No. N-5

CERTIFICATE OF LOCATION OF GOVERNMENT CORNER

NORTHEAST Corner of Section 19, Township 42, Range 22
4TH Principal Meridian, State of Minnesota, County of KANABEC

At the corner location shown on the sketch:

- On 2/1/2010 found a 5/8" REBAR UP 1.4'
DATE
- left monument as found, lowered monument, removed monument (explain)
- On Placed a
DATE



KANABEC COUNTY
COORDINATE SYSTEM
NAD 83 1996 ADJ.
N = 240546.684
E = 434459.948

Statement of evidence for this corner location is on back of this page. RAL APRIL 2010 SFT00056.00.00.01

I certify that this document was researched and prepared by me or under my direct supervision.

SIGNATURE John D. Walker DATE License Number 16098

Title: Land Surveyor Professional Engineer County Surveyor County Engineer

Northeast Corner Section 19, Township 42 North, Range 22 West

The Department of Natural Resources, Division of Lands and Minerals, contacted the following offices for information regarding this corner:

MN Secretary of State
 Kanabec County Surveyor
 Kanabec County Recorder's Office
 Kanabec County Engineer's Office
 E.G. Rud & Sons, Inc., Land Surveyors
 Kroschel Land Surveyors, Inc.

1855 The US General Land Office field notes, on file in the Secretary of State's Office, show this corner to be marked with a post and the following bearing trees were marked:

Sugar 12"	N34°30'W	44 links (29.04')
Sugar 10"	N34°30'E	12 links (7.92')
White Birch 12"	S 56°22'W	35 links (23.1')
Sugar 7"	S54° E	22 links (14.52')

1909 John Nelson, Kanabec County Surveyor, made a survey in sections 17 and 18. He measured the line between the sections at 78.2 chains (5161.2') and set the quarter corner at a split. He doesn't say what was found at this corner. The survey was for staking the lines of the Northwest Quarter in both sections.

2010 In January the DNR survey crew searched for evidence of corners between sections 19 and 20. The crew found the following monuments near the east line of section 19 as measured from the Northeast Corner Section 30: 2634.8' found a "U" style fence post up 0.5' with a 3/4" iron pipe up 2' next to it (418), 3956.0' found a "U" style fence post up 0.5' with a "T" style fence post next to it (419), 5273.94' found a 5/8" rebar up 1.4' (405); these were on a 6' wide brushed out line. We checked with area landowners Florence Berquist and Jon Ostrand about the origin of the fence posts and other monuments found on the line between 19 and 20, but no one knew where they came from. A line drawn from the northeast corner section 30 to the northeast corner section 18 falls 3.9' west of the rebar with the overall distance between the section corners 10455.44' or 104.5' short of GLO. An old road grade was located from the northeast corner section 18 southerly about 2660'. The ditches were split at 4 spots along the road and they fall about 3' east of the line between the northeast corner section 18 and the rebar. GLO feature calls to a swamp north and the point of a lake east were located, but a location from these calls wasn't definite. The rebar was accepted as marking the northeast corner section 19.

East Quarter Corner Section 19 bears S00°08'18"W 2639.13'
 Northwest Corner Section 19 bears S89°03'16"W 5359.56'
 Northeast Corner Section 18 bears N00°03'16"E 5181.50'

For more information on our survey in this area, please contact MN DNR, Division of Lands and Minerals, Survey Section, 1601 Minnesota Drive, Brainerd, MN 56401