

4222121

Index No. _____ P-5 _____

CERTIFICATE OF LOCATION OF GOVERNMENT CORNER

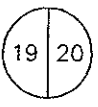
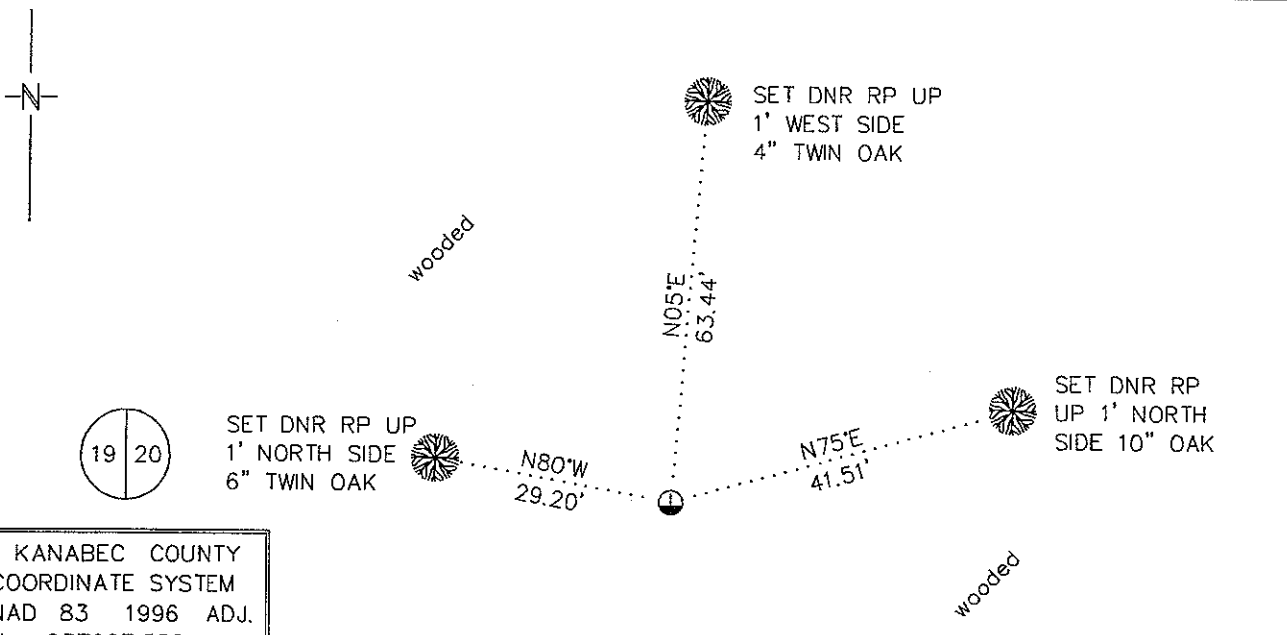
EAST QUARTER Corner of Section 19, Township 42, Range 22

4TH Principal Meridian, State of Minnesota, County of KANABEC

At the corner location shown on the sketch:

On 2/1/2010 found a "U" STYLE STEEL FENCE POST UP 0.3' WITH A 3/4" I.D. IRON PIPE UP
DATE
1.5' ON SOUTH SIDE, ON 6' WIDE N-S BRUSHED LINE +/- 80' SOUTH OF OPEN MARSH
 left monument as found, lowered monument, removed monument (explain)

On _____ Placed a _____
DATE



KANABEC COUNTY
 COORDINATE SYSTEM
 NAD 83 1996 ADJ.
 N = 237907.558
 E = 434453.574

NOTE: BEARINGS OBSERVED WITH COMPASS.

Statement of evidence for this corner location is on back of this page. RAL APRIL 2010
SFT00056.00.00.01

I certify that this document was researched and prepared by me or under my direct supervision.

SIGNATURE *John D. Weiler* DATE 7/2/2010 License Number 16098

Title: Land Surveyor Professional Engineer County Surveyor County Engineer

East Quarter Corner Section 19, Township 42 North, Range 22 West

The Department of Natural Resources, Division of Lands and Minerals, contacted the following offices for information regarding this corner:

- MN Secretary of State
- Kanabec County Surveyor
- Kanabec County Recorder's Office
- Kanabec County Engineer's Office
- E.G. Rud & Sons, Inc., Land Surveyors
- Kroschel Land Surveyors, Inc.

1855 The US General Land Office field notes, on file in the Secretary of State's Office, show this corner to be marked with a post and the following bearing trees were marked:

- Tamarac 9" N46°30'E 7 links (4.62')
- Tamarac 12" S44°W 15 links (9.9')

2010 In January the DNR survey crew searched for evidence of corners between sections 19 and 20. The crew found the following monuments near the east line of section 19 as measured from the Northeast Corner Section 30; 2634.8' found a "U" style fence post up 0.5' with a 3/4" iron pipe up 2' next to it (418); 3956.0' found a "U" style fence post up 0.5' with a "T" style fence post next to it (419); 5273.94' found a 5/8" rebar up 1.4' (405). These were on a 6' wide brushed out line. We checked with area landowners Florence Berquist and Jon Ostrand about the origin of the fence posts and other monuments found on the line between sections 19 and 20, but no one knew where they came from. The rebar was accepted as marking the northeast corner of section 19 and "U" style steel fence post was accepted as marking the East Quarter corner of Section 19. The lost position for this falls 2.2' north of the "U" style fence post.

- Southeast Corner Section 19 bears S 00° 08'23" W 2634.81'
- Northeast Corner Section 19 bears N 00° 08'18" E 2639.13'

For more information on our survey in this area, please contact MN DNR, Division of Lands and Minerals, Survey Section, 1601 Minnesota Drive, Brainerd, MN 56401