

4222120

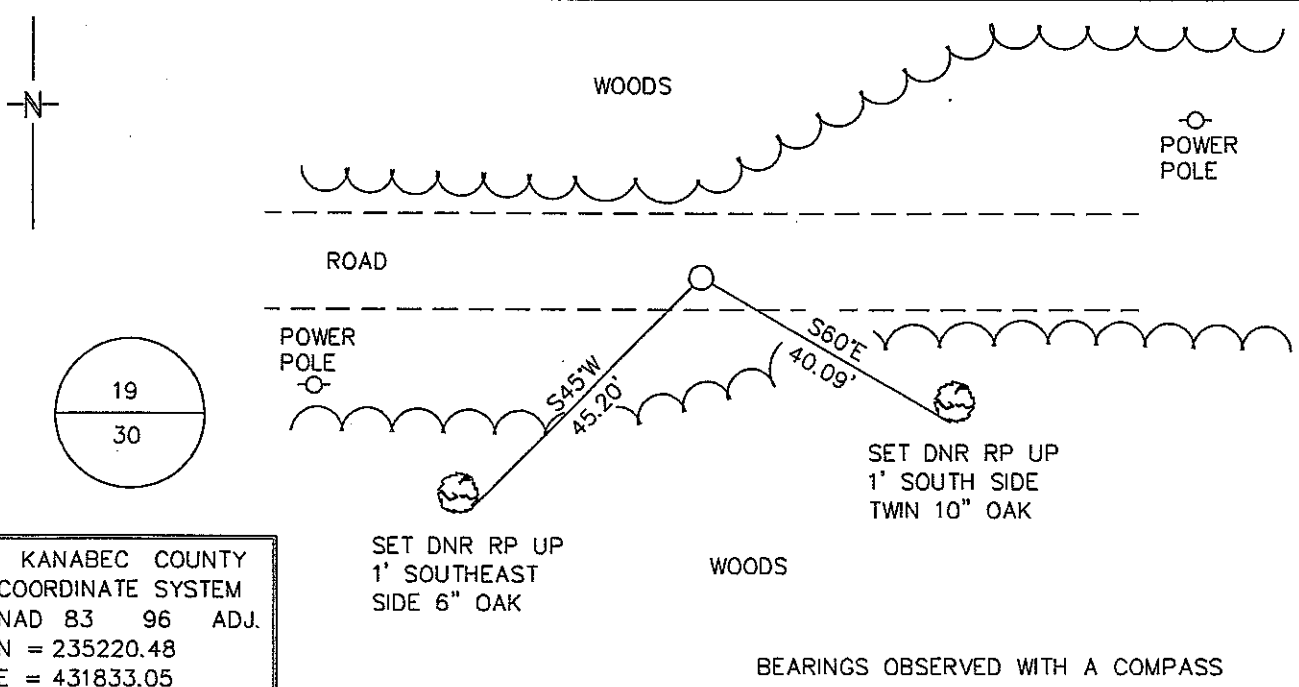
Index No. R-3

CERTIFICATE OF LOCATION OF GOVERNMENT CORNER

NORTH QUARTER Corner of Section 30, Township 42 N, Range 22 W
4TH Principal Meridian, State of Minnesota, County of KANABEC

At the corner location shown on the sketch:

- On 9/1/04 found a BRIDGE SPIKE 3' SOUTH OF CENTERLINE ROAD
DATE
- left monument as found, lowered monument, removed monument (explain)
- On 9/1/04 Placed a 3/4" IRON ROD WITH SURVEY CAP
DATE
INPLACE OF FOUND BRIDGE SPIKE



KANABEC COUNTY
COORDINATE SYSTEM
NAD 83 96 ADJ.
N = 235220.48
E = 431833.05

BEARINGS OBSERVED WITH A COMPASS

Statement of evidence for this corner location is on back of this page.

NOVEMBER 2005
SFT00056

I certify that this document was researched and prepared by me or under my direct supervision.

SIGNATURE [Signature] DATE 12/2/09 License Number 16098

Title: Land Surveyor Professional Engineer County Surveyor County Engineer

North Quarter Corner Section 30, Township 42 North, Range 22 West

The Department of Natural Resources, Division of Lands and Minerals, contacted the following offices for information regarding this corner:

MN Secretary of State
 Kanabec County Surveyor
 Kanabec County Recorder's Office
 Kanabec County Engineer's Office
 E.G. Rud & Sons, Inc., Land Surveyors

- 1855 The US General Land Office field notes, on file in the Secretary of State's Office, show this corner to be marked with a post and the following bearing trees were marked:
 White Birch 16" S4°15'E 30 links (19.8')
 White Birch 12" N15°15'E 5 links (3.3')
 GLO measured 82.10 chains (5418.6') across the north line of the section.
- 1903 For a road survey in Kroschel Township, Surveyor John Nelson, began at the northeast corner of section 34, thence along the north line of sections 34, 33 and 32, thence north on the east line of Section 30 to the northeast corner, thence west on the north line section 30 to the north quarter corner. From the northeast corner of Section 30 he measured 39.96 chains (2637.36') to this corner. The road survey terminated at this corner. No mention if anything found or set.
- 1904 For a road survey in Kroschel Township, Surveyor John Nelson, began at the northeast corner of Section 33, thence along the north line of sections 33 and 32, thence north on the east line to the northeast corner of Section 30, thence west along the north line of section 30 to the northwest corner. He measured a distance of 39.72 chains (2621.52') to the northeast corner and 40.74 chains (2688.84') to the northwest corner of Section 30. The road survey terminated at the northwest corner of Section 30 and the northeast corner of Section 29. No mention if anything found or set.
- 2004 In August the DNR survey crew searched for evidence of the corner and found a bridge spike 3' south of centerline of an east-west road. A distance of 5366.51' was measured across the north line of the section. The spike was on line between the northeast and northwest corners of the section and at the GLO proportion. No occupation north or south. Using Nelson's 1904 proportion of the north line a distance of 2649.24' was calculated from the northeast corner of the section. Nelson's distances on the road surveys don't seem to fit any patterns, so they were not used. The bridge spike was accepted as marking the obliterated location of the corner and a 3/4" iron rod with survey cap was set in place of the spike and ties were taken.
 Northeast Corner Section 30 bears N88°51'16"E 2614.62'
 Northwest Corner Section 30 bears S88°51'16"W 2751.89'

For more information on our survey in this area, please contact MN DNR, Division of Lands and Minerals, Survey Section, 1601 Minnesota Drive, Brainerd, MN 56401