

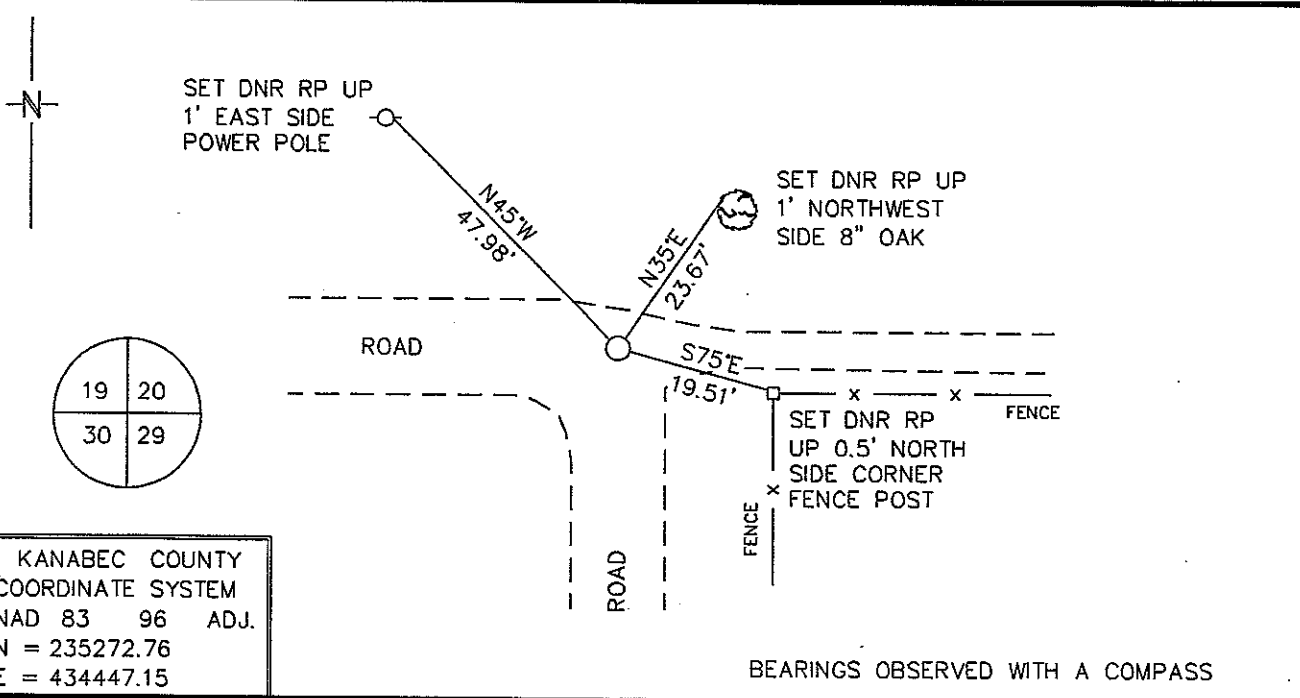
Index No. R-5

CERTIFICATE OF LOCATION OF GOVERNMENT CORNER

NORTHEAST Corner of Section 30, Township 42 N, Range 22 W
4TH Principal Meridian, State of Minnesota, County of KANABEC

At the corner location shown on the sketch:

- On 8/12/04 found a BRIDGE SPIKE IN CENTERLINE ROADS EAST-WEST & SOUTH
DATE
- left monument as found, lowered monument, removed monument (explain)
- On 9/1/04 Placed a 3/4" IRON ROD WITH SURVEY CAP
DATE
INPLACE OF FOUND BRIDGE SPIKE



Statement of evidence for this corner location is on back of this page. NOVEMBER 2005 SFT00056

I certify that this document was researched and prepared by me or under my direct supervision.

SIGNATURE John D. Walker DATE 12/8/09 License Number 16098

Title: Land Surveyor Professional Engineer County Surveyor County Engineer

Northeast Corner Section 30, Township 42 North, Range 22 West

The Department of Natural Resources, Division of Lands and Minerals, contacted the following offices for information regarding this corner:

MN Secretary of State
 Kanabec County Surveyor
 Kanabec County Recorder's Office
 Kanabec County Engineer's Office
 E.G. Rud & Sons, Inc., Land Surveyors

- 1855 The US General Land Office field notes, on file in the Secretary of State's Office, show this corner to be marked with a post and the following bearing trees were marked:
- White Pine 12" N35°W 30 links (19.8')
 - Aspen 16" N53°E 26 links (17.16')
 - White Birch 16" S 66° 30' E 24 links (15.84')
 - Balsam 6" S 44° 30'E 21 links (13.86')
- 1903 For a road survey in Kroschel Township, Surveyor John Nelson, began at the northeast corner of section 34, thence along the north line of sections 34, 33 and 32, thence north on the east line of Section 30 to the northeast corner, thence west on the north line section 30 to the north quarter corner. He measured 40 chains (2640') to the east quarter corner and 39.96 chains (2637.36') to the north quarter corner of Section 30. The road survey terminated at the north quarter of Section 30. No mention if anything found or set.
- 1904 For a road survey in Kroschel Township, Surveyor John Nelson, began at the northeast corner of Section 33, thence along the north line of sections 33 and 32, thence north on the east line to the northeast corner of Section 30, thence west along the north line of section 30 to the northwest corner. He also went east along the north line of section 29 to the northeast corner thereof. He measured a distance of 40.35 chains (2663.1') to the east quarter corner and 39.72 chains (2621.52') to the north quarter of Section 30. The road survey terminated at the northwest corner of Section 30 and the northeast corner of Section 29. No mention if anything found or set.
- 2004 In August the DNR survey crew found a bridge spike in the centerline of roads east-west and south. A distance of 2649.96' was measured to the east quarter corner and 2614.62' to the north quarter corner of Section 30. Nelson's distances on the road surveys don't seem to fit any patterns, so they were not used. The bridge spike was accepted as marking the obliterated location for the corner. A ¾" iron rod with survey cap was set in place of the spike and ties were taken.
- East Quarter Corner Section 30 bears S00°18'19"E 2649.96'
 - North Quarter Corner Section 30 bears S88°51'16"W 2614.62'

For more information on our survey in this area, please contact MN DNR, Division of Lands and Minerals, Survey Section, 1601 Minnesota Drive, Brainerd, MN 56401