

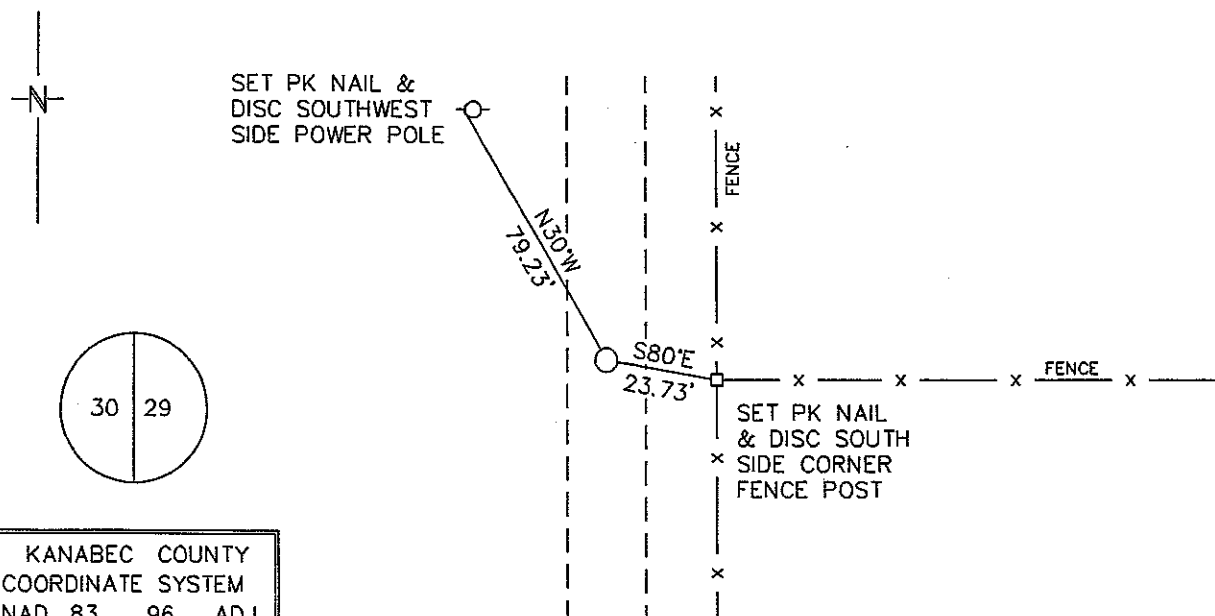
Index No. T-5

CERTIFICATE OF LOCATION OF GOVERNMENT CORNER

EAST QUARTER Corner of Section 30, Township 42 N, Range 22 W
4TH Principal Meridian, State of Minnesota, County of KANABEC

At the corner location shown on the sketch:

- On _____ found a _____
DATE
- left monument as found, lowered monument, removed monument (explain)
- On 9/1/04 Placed a 3/4" IRON ROD WITH SURVEY CAP IN CENTERLINE ROAD
DATE
AT SPLIT BETWEEN SECTION CORNERS



KANABEC COUNTY
COORDINATE SYSTEM
NAD 83 96 ADJ.
N = 232622.84
E = 434461.26

BEARINGS OBSERVED WITH A COMPASS

Statement of evidence for this corner location is on back of this page.

NOVEMBER 2005
SFT00056

I certify that this document was researched and prepared by me or under my direct supervision.

SIGNATURE *James D. Walker* DATE 12/8/09 License Number 16098

Title: Land Surveyor Professional Engineer County Surveyor County Engineer

East Quarter Corner Section 30, Township 42 North, Range 22 West

The Department of Natural Resources, Division of Lands and Minerals, contacted the following offices for information regarding this corner:

MN Secretary of State
 Kanabec County Surveyor
 Kanabec County Recorder's Office
 Kanabec County Engineer's Office
 E.G. Rud & Sons, Inc., Land Surveyors

- 1855 The US General Land Office field notes, on file in the Secretary of State's Office, show this corner to be marked with a post and the following bearing trees were marked:
 White Pine 10" N74°W 3 links (1.98')
 White Birch 15" S86°E 17 links (11.22')
- 1903 For a road survey in Kroschel Township, Surveyor John Nelson, began at the northeast corner of section 34, thence along the north line of sections 34, 33 and 32, thence north on the east line of Section 30 he measured 40.14 chains (2649.24') to the east quarter corner and 40.00 chains (2640') to the northeast corner. No mention if anything found or set.
- 1904 For a road survey in Kroschel Township, Surveyor John Nelson, began at the northeast corner of Section 33, thence along the north line of sections 33 and 32, thence north on the east line of Section 30 he measured 40.14 chains (2649.24') to the east quarter corner and 40.35 chains (2663.1') to the northeast corner. No mention if anything found or set.
- 2004 In August the DNR survey crew searched for evidence of the corner and found a fence line running east of the centerline of a north-south road in the vicinity of the corner. A distance of 5299.70' was measured for the east line of the section and the fence line was 2644.2' northerly of the southeast corner. Using Nelson's 1904 proportion of the east line a distance of 2642.94 feet was calculated from the southeast corner and using his 1903 proportion would put the corner 2654.48' north. The proportion positions fall from 1.3' south of the fence line east to 10.3' north of the fence line. As neither of the proportions fit the fence, it was decided to go with a split of the distances between the section corners and hold the centerline of the north-south road as the obliterated location of the corner. The centerline of the road falls 24.2' easterly of a straight line between the section corners. A ¾" iron rod with survey cap was set to perpetuate the location and ties were taken.
 Southeast Corner Section 30 bears N 00° 44' 31" E 2649.96'
 Northeast Corner Section 30 bears N 00° 18' 19" W 2649.96'

For more information on our survey in this area, please contact MN DNR, Division of Lands and Minerals, Survey Section, 1601 Minnesota Drive, Brainerd, MN 56401