

CERTIFICATE OF LOCATION OF GOVERNMENT CORNER

NORTH QUARTER Corner of Section 32, Township 42, Range 22, 4TH P.M.

STATE OF MINNESOTA, County of KANABEC

At the corner location shown on the sketch:
ON 5/5/2014 SET A 1/2" BY 14" IRON PIPE WITH CAP MARKED RLS NO. 9808.

Kanabec County U.S. Survey Feet Coordinates
NAD 1983, HARN 1996 Adjustment
Obtained by RTK GPS Observation

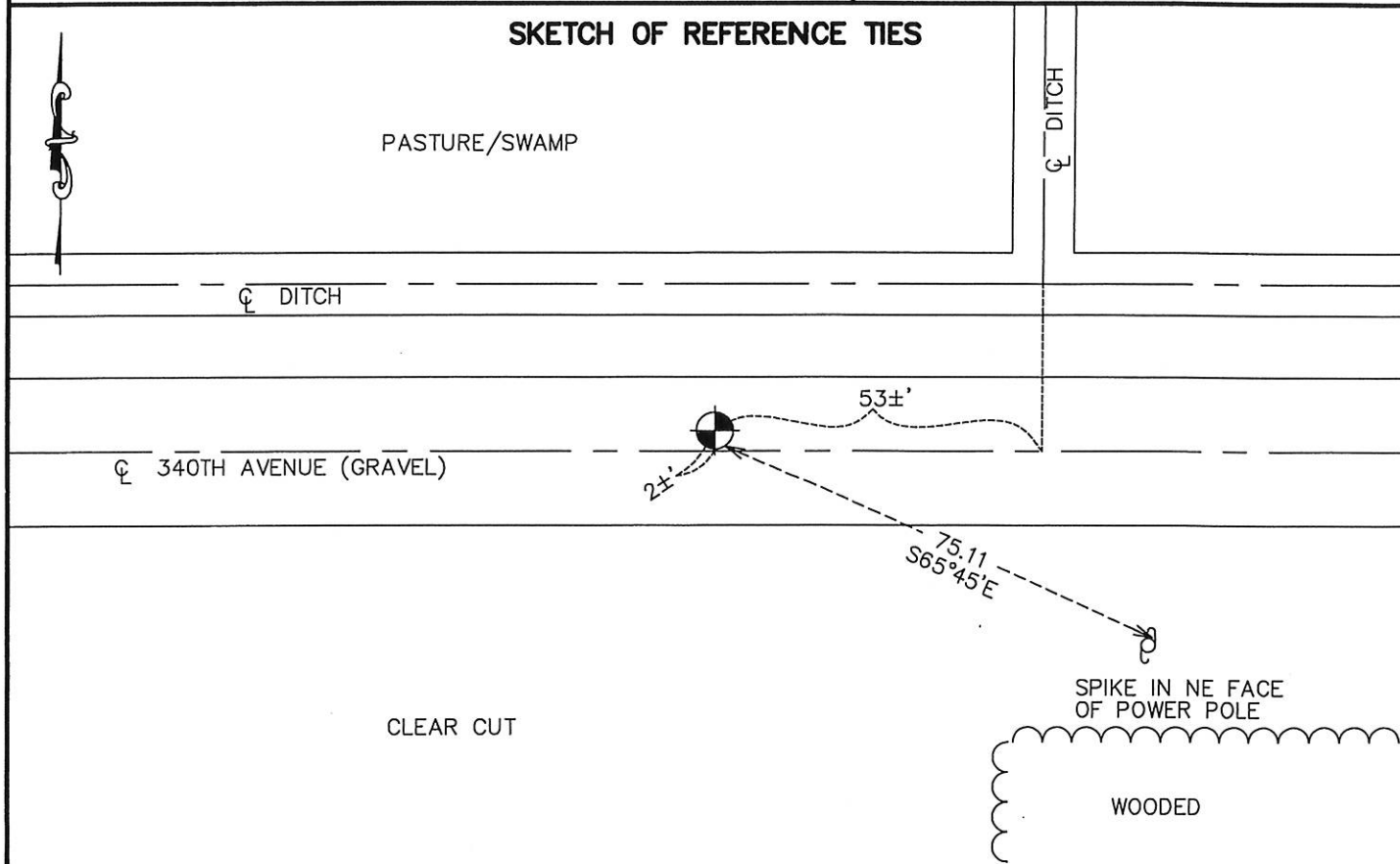
Northing= 229955.30

Easting= 437032.62

Note: NAD 1983, HARN 1996 Adjustment coordinates are NOT compatible with NAD 1983 coordinates

Note: 1 Meter=3937/1200 U.S. Survey Feet

SKETCH OF REFERENCE TIES



Statement of evidence relative to this corner location is on back of page.

I hereby certify that this document and the data contained herein was prepared by me or under my direct supervision.

Ernest L. Rud
Signature

12-10-14
Date

Registration No. Miss No. 9808

Land Surveyor, Professional Engineer

County Surveyor, County Engineer

OFFICE OF THE COUNTY RECORDER

County of _____

I hereby certify that this document was filed in the County Recorder's office at _____ M. on the

_____ day of _____ A.D., 20 _____

County Recorder _____

BY _____ Deputy

DOCUMENT NO. _____

STATEMENT OF EVIDENCE

THE DEPARTMENT OF NATURAL RESOURCES, BUREAU OF ENGINEERING (BOE) MADE THE FOLLOWING CONTACTS FOR INFORMATION CONCERNING THIS CORNER:

**MINNESOTA SECRETARY OF STATE'S OFFICE
COUNTY AUDITOR, ENGINEER, RECORDER AND SURVEYOR**

1855 THE U.S. GENERAL LAND OFFICE SET A POST TO MARK THIS CORNER AND THE FOLLOWING BEARING TREES WERE MARKES

**9" SPURCE BEARING S3°45'E AT 9 LINKS
6" SPRUCE BEARING N66°45'W AT 5 LINKS**

1903 SURVEYOR JOHN NELSON MADE A SURVEY OF SEVERAL ROAD OPENINGS IN THE TOWNSHIP OF KROSCHER. HE ESTABLISHED A ROAD OPENING ALONG THE NORTH LINES OF SEC. 32, 33 AND 34. HE MEASURED 79.44 CHAINS BETWEEN THE NOTHEAST CORNER OF SEC. 32 AND THE NORTHWEST CORNER OF SEC. 32. HE STATES ALL THE CORNERS ON THE PLAT MARKED "G" INDICATE CORNERS THAT WERE FOUND GOVERMENT MARKS AT THE TIME OF THIS SURVEY. (NO MARKS ARE ON THE PLAT ON PAGE 315)

1904 SURVEYOR JOHN NELSON MADE A SURVEY FOR A TOWNSHIP ROAD BETWEEN THE FOLLOWING SECTIONS: 28&33, 29&32, 29&30, 20&29, 19&30. HE SHOWS A MEASUREMENT OF 79.43 CHAINS ALONG THE NORTH LINE OF SEC. 32.

1995 THE BOE SEARCHEDFOR THIS CORNER AT THE LOST POSITION BETWEEN SECTION CORNERS. NOTHING WAS FOUND. THE CORNER WAS ACCEPTED AS LOST. NOTHING WAS SET TO MARK THE CORNER. THE DISTANCE TO THE SECTION CORNERS EAST AND WEST WAS 2605.32 FEET.

FOR INFORMATION REGARDING THIS SURVEY, CONTACT THE MN DEPARTMENT OF RESOURCES, BUREAU OF ENGINEERING, SURVEY SECTION, 500 LAFAYETTE ROAD, ST. PAUL, MN 55155-4029

ON MAY 5, 2014 E. G. RUD AND SONS, INC. SET A 1/2" BY 14" IRON PIPE WITH A CAP MARKED "RLS 9808" ONLINE AND MIDWAY BETWEEN THE NORTHEAST AND NORTHWEST CORNERS OF SEC. 32 TIES WERE TAKEN AND KANABEC COUNTY COORDINATES WERE ESTABLISHED ON THIS LOCATION.