

CERTIFICATE OF LOCATION OF GOVERNMENT CORNER

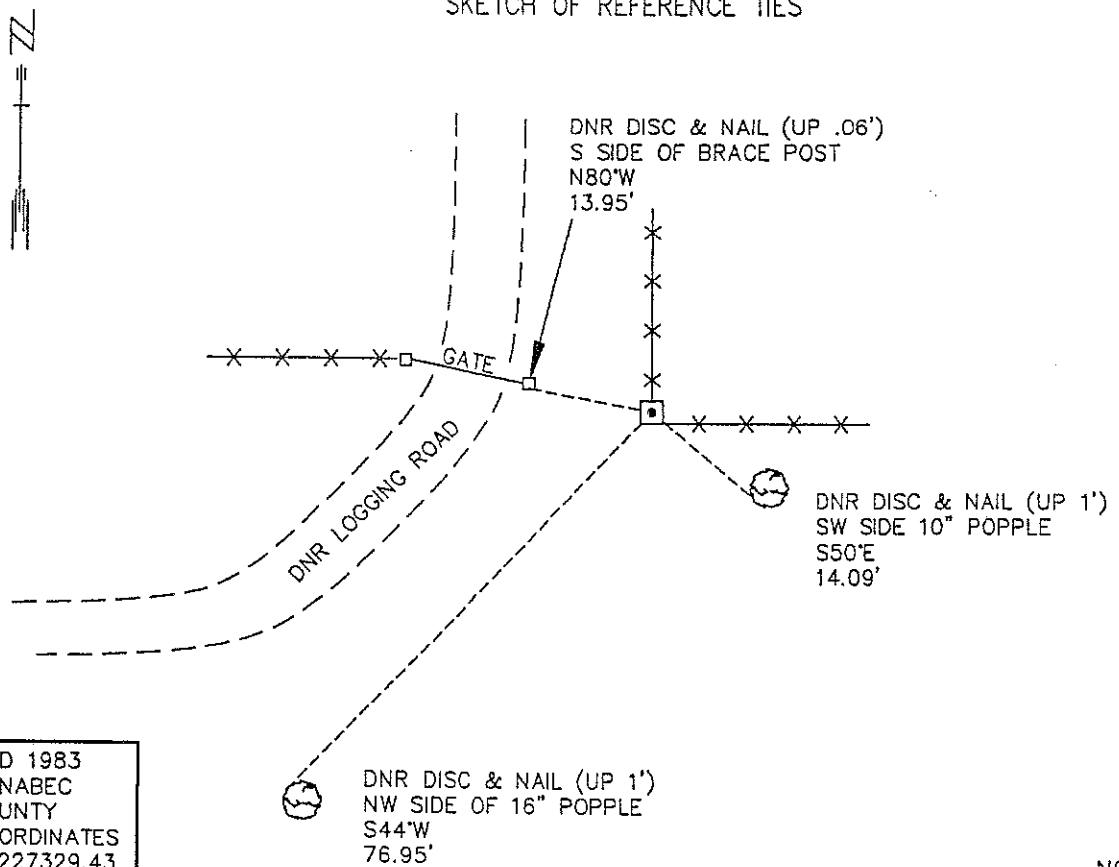
EAST QUARTER Corner of Section 31, Township 42 N, Range 22 W, 4th P.M.

STATE OF MINNESOTA, County of KANABEC

At the corner location shown on the sketch:

- On 10-19-95 found a FENCE INTERSECTION (N-E-NNW)
DATE
- left monument as found, lowered monument, removed monument (explain)
- On 10-19-95 Placed a 3/4" x 24" REBAR WITH AN ALUMINUM CAP STAMPED: "DNR SURVEY MARKER"
DATE
AT BASE OF RAILROAD TIE CORNER FENCE POST.

SKETCH OF REFERENCE TIES



NAD 1983
KANABEC
COUNTY
COORDINATES
N 227329.43
E 434396.38

NOT TO SCALE
BEARINGS OBSERVED WITH A COMPASS

Statement of evidence relative to this corner location is on back of page.

MARCH 1997
WMA01539

I hereby certify that this document and the data contained herein was prepared by me or under my direct supervision.

John D. Walker 3/21/97
SIGNATURE DATE

License Number 16098

- Land Surveyor, Professional Engineer
- County Surveyor, County Engineer

OFFICE OF THE COUNTY RECORDER
County of _____

I hereby certify that this document was filed in the Co. recorders office at _____ .M. on the _____ day of _____ A.D., 19____
County Recorder _____
By _____, Deputy
DOCUMENT NO. _____

East Quarter Corner Section 31, Township 42 North, Range 22 West, 4th P.M.

The Department of Natural Resources, Bureau of Engineering (BOE) made the following contacts for information concerning this corner:

Minnesota Secretary of States Office
County Auditor, Engineer, Recorder and Surveyor

1855 The U.S. General Land Office set a post to mark this corner and the following bearing trees were marked:

Aspen 12" N 83° 30' E 12 links (7.92')
Sugar 6" N 52° 15' W 7 links (4.62')

1995 The BOE searched for the corner in the area of fences east and west and logging road north. A railroad tie corner fence post was located with fences running north, east and northwest. Glenn Bartel, 63 year old life long resident of the northeast quarter of section 31, thought the post was the corner. The fence had been rebuilt in place of an old fence. The old fence was destroyed when the logging road was put in. Based on this information the corner was believed to be obliterated. A DNR survey marker was set at the south base of the corner fence post. This corner is 2643.39' from the northeast corner of section 31.

For information regarding this survey, contact the MN Department of Natural Resources, Bureau of Engineering, Survey Section, 500 Lafayette Road, St. Paul, MN 55155-4029.