

CERTIFICATE OF LOCATION OF GOVERNMENT CORNER

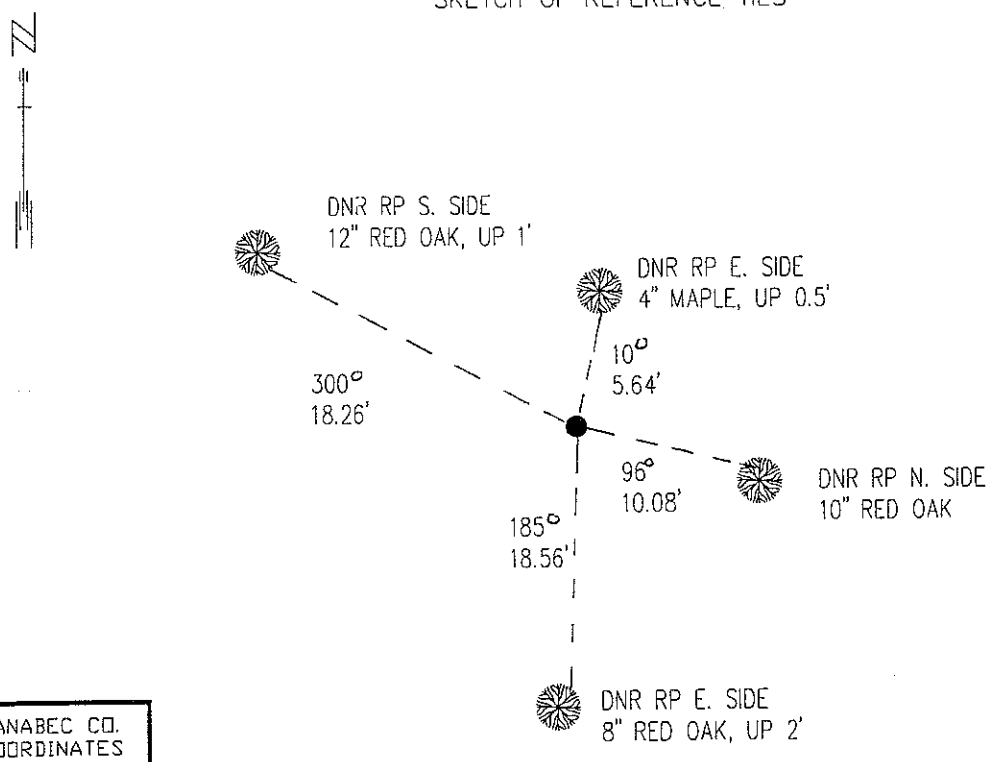
EAST QUARTER Corner of Section 5, Township 42, Range 22, 4TH P.M.

STATE OF MINNESOTA, County of KANABEC

At the corner location shown on the sketch:

- On _____ found a _____
DATE
- left monument as found, lowered monument, removed monument (explain)
- On 8/19/98 Placed a 3/4" X 24" IRON ROAD WITH A "MNDNR SURVEY MARKER" CAP
DATE

SKETCH OF REFERENCE TIES



KANABEC CO.
COORDINATES


N 253583.70
E 439914.03

AZIMUTHS TAKEN WITH COMPASS

Statement of evidence relative to this corner location is on back of page.

12/98
WMA00271

I hereby certify that this document and the data contained herein was prepared by me or under

my direct supervision.

 SIGNATURE John D. Walker DATE 12/98

License Number 16098

Land Surveyor, Professional Engineer
 County Surveyor, County Engineer

OFFICE OF THE COUNTY RECORDER
County of _____

I hereby certify that this document was filed in the Co. recorders office at _____ M. on the _____ day of _____ A.D., 19____

County Recorder _____
 By _____, Deputy
 DOCUMENT NO. _____

East Quarter Corner Section 5, Township 42 North, Range 22 West

The DNR Bureau of Engineering contacted the following for survey information:

Minnesota Secretary of State's Office
Kanabec County Recorders's Office
Kanabec County Highway Engineer
Kanabec County Surveyor
Bill Hayden, Land Surveyor
Terrence Johnson, Land Surveyor

1855 U.S. General Land Office notes obtained from the Secretary of State's Office states that a post was set to mark the corner with the following bearing trees marked:

Aspen 15" N 37° E 12 links (7.92 feet)
Aspen 13" N 14° 30' E 8 links (5.28 feet)

1997 MN DNR Bureau of Engineering searched for the corner at the lost position and found nothing.

1998 MN DNR Bureau of Engineering considered this corner lost and set a DNR Survey Marker for the corner at the single proportion distance. The corners used for the proportion are the Northeast Corner Section 8 and the Northeast Corner Section 5. Measurements to the section corners north and south are:

N01°20'44"E 2729.12 feet
S01°20'44"W 2589.30 feet

For more information on our survey in this area please contact MN DNR, Bureau of Engineering, Survey Section, 1601 Minnesota Drive, Brainerd, MN 56425